



GUIDELINES FOR PREVENTION AND MANAGEMENT OF MPOX IN SCHOOLS



Mpox is a disease caused by a virus of Mpox (Monkey pox.). The disease re-emerged in the world in 2022. Since 2023, it has spread in different countries bordering Rwanda. In July 2024, Rwanda officially reported confirmed cases of Mpox within its borders. Mpox patients are being taken care of and most of them recovered and no deaths cases are recorded.

Schools are potentially at a high risk of infectious diseases including Mpox, and their spread within the schools and community. Therefore, proactive screening in schools can play a vital role in early detection and prevention of potential Mpox outbreaks.

Everyone can be infected with Mpox through the following mode of transmission:

Mpox is transmitted through body contact with infected persons and/or contact with body fluids. This can happen during:

- Sexual intercourse with an infected person (whether protected or not)
- Greeting by shaking hands or hugging
- Kissing
- Touching fomite (Objects or materials which are likely to carry infection such as clothes, utensils, and furniture).

Incubation period

A person infected with Mpx can present signs and symptoms from 2-21 days.

Signs and symptoms



1 Developing skin rashes



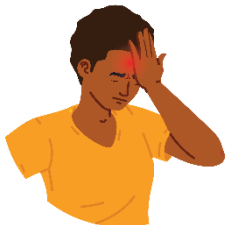
2. High temperature up to 38.5 0C



3 Swelling under-Neath the ears



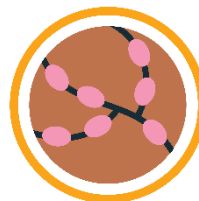
4. Sore throat



5 Headache



6 Back and muscle aches



7 Swollen lymph nodes

Prevention Measures

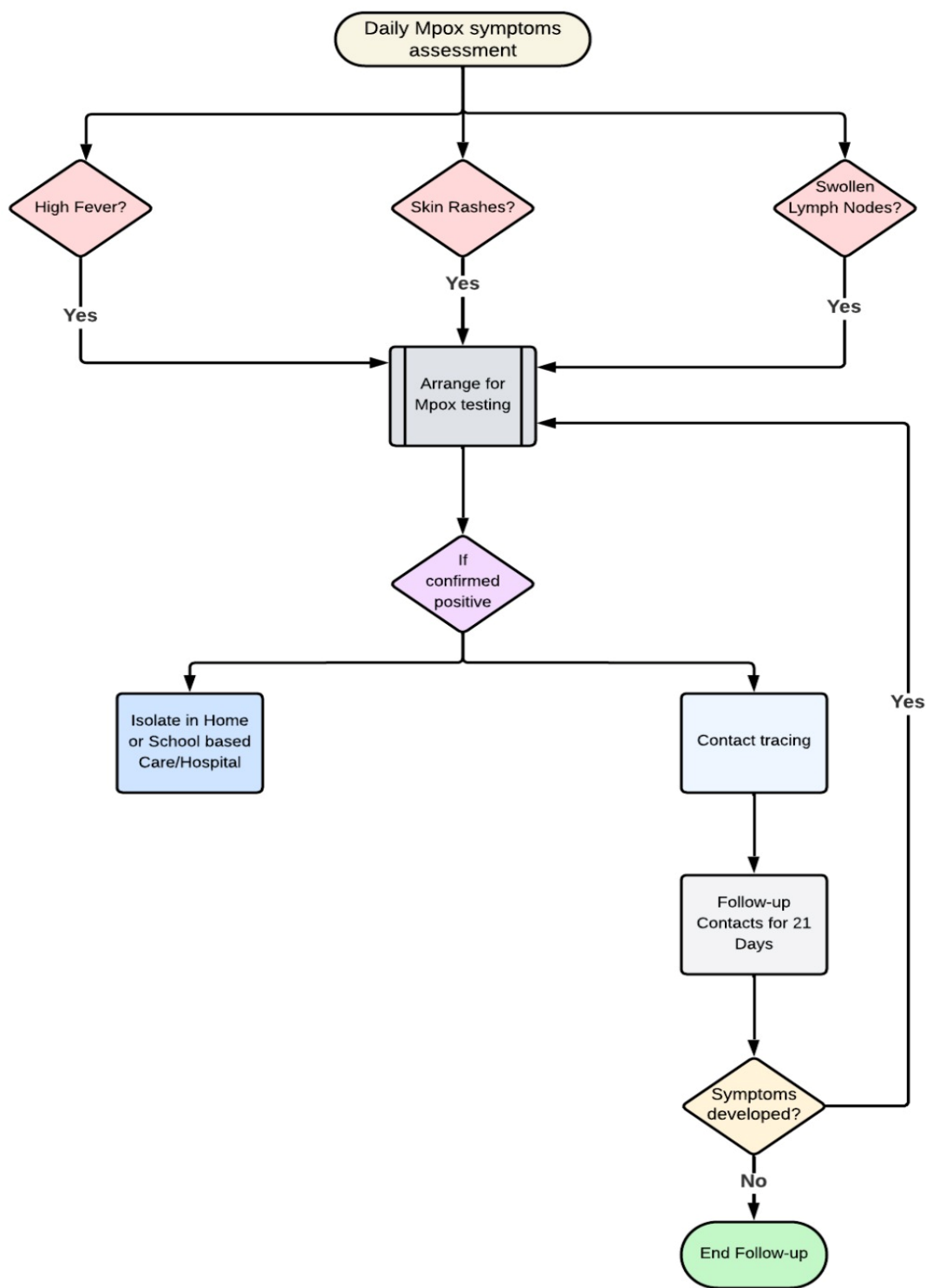
The schools are reminded to adhere to the following Mpox preventive measures:

- Avoid contact with an infected person with symptoms and his/her fomites
- Avoid sexual contact with an Mpox infected person.
- Hand washing with clean running water and soap.

Key Actions to be done in schools

The schools are reminded of the following key interventions for effective Mpox screening:

- At the day of official school opening, the screening should be done at entrance of schools for early identification of Mpox cases.
- Maintain daily screening of Mpox symptoms in classrooms, by the class teachers and daily report to the school administration
- Set up dedicated areas at school entrances for daily health checks and screening of students at the meeting sites before boarding buses when going back to schools.
- Provide comprehensive training to teachers and administrative staff on recognizing Mpox symptoms and proper screening procedures. This will be implemented in close collaboration with District command posts.
- Designate safe spaces for temporary isolation of suspected cases pending further evaluation.
- Reinforce handwashing, sanitization, and personal hygiene measures throughout school premises.
- Establish a clear information flow in schools for reporting suspected cases to health authorities.
- Make students always aware of Mpox outbreak and sensitize them for self-reporting of symptoms and any contacts they have been exposed to.
- Inform the school community about Mpox symptoms, prevention, and the importance of screening.



For further information about guidelines for prevention and management of mpox, please visit: <https://rbc.gov.rw/mpox/> , call the toll-free number 114 / command post: +250787861407 or Scan the following Qr code:

