



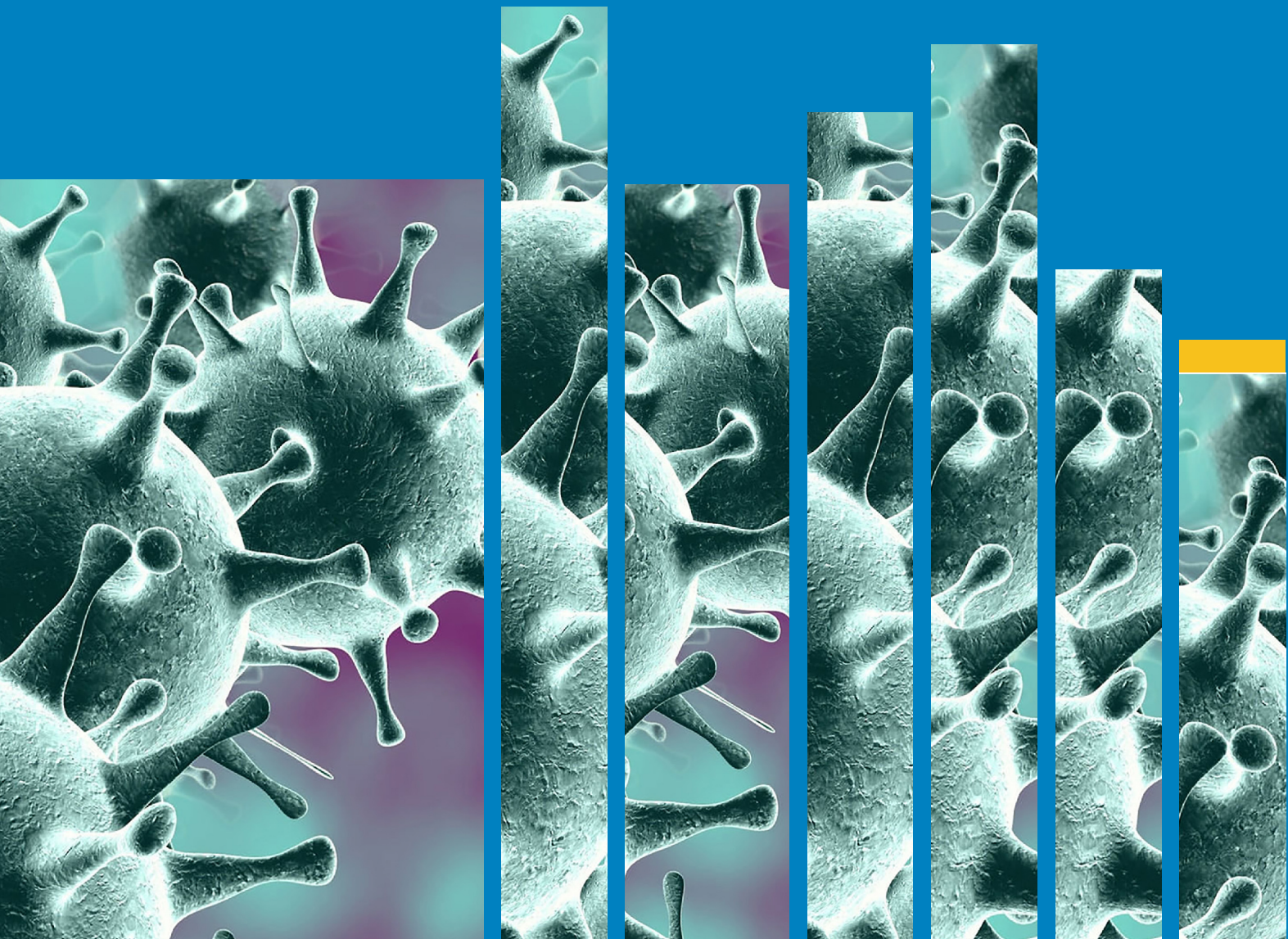
Republic of Rwanda  
Ministry of Health



# Coronavirus disease 2019 (COVID-19)

Updated on Tuesday, 09 June 2020

Daily brief – **60**



## A. SITUATION IN NUMBERS

Update on total numbers of (new) cases at all levels in the past 24 hours

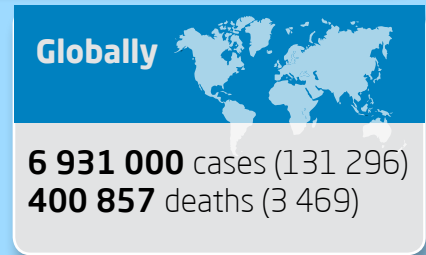
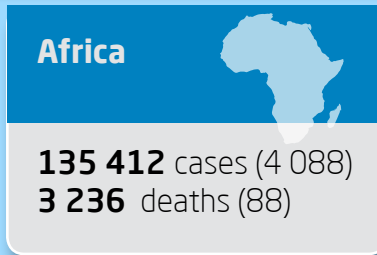
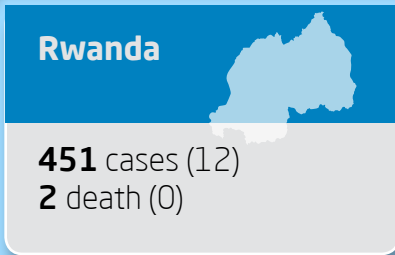


Figure 1. Epidemic curve of COVID-19 confirmed cases trend, by date of report as of 8 June 2020

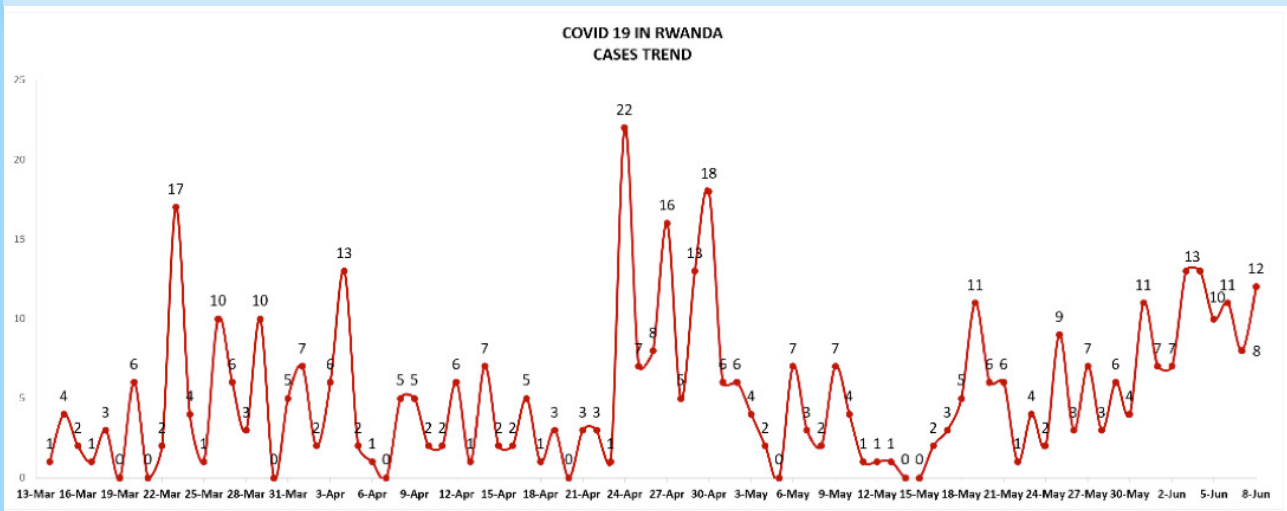


Figure 2. COVID-19 confirmed cases by age, by date of report as of 8 June 2020

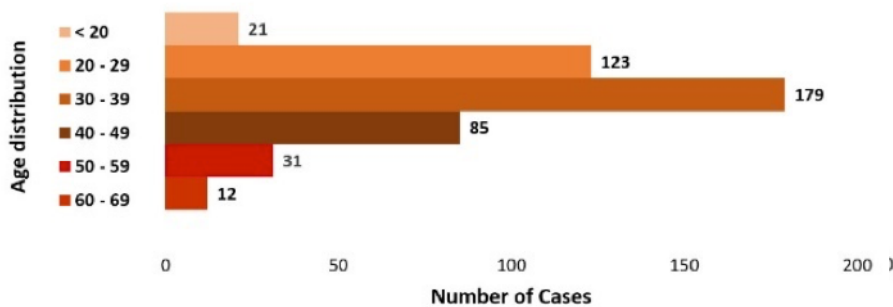
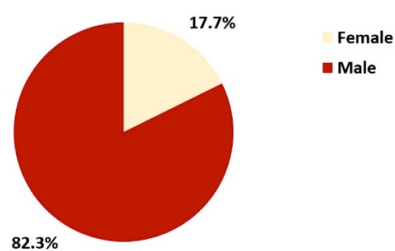


Figure 3. COVID-19 confirmed cases by gender, by date of report as of 8 June 2020

**Gender Distribution**



## B. HIGHLIGHTS

- On Monday, 8 June 2020, Rwanda's Ministry of Health confirmed 12 new cases of COVID-19 out of 1928 samples tested, taking the total number of cases to 451 of whom 297 have recovered, including Seven in the past 24 hours. [Read more](#)
- The Government of Rwanda and the European Union (EU) Monday signed a Rwf55 billion grant agreement to support social protection in response to the Covid-19 crisis in the country, the Ministry of Finance and Economic Planning said in a statement. [Read more](#)
- WHO has published its COVID-19 Situation Report - 140 with data as received from national authorities by 10:00 CEST, 8 June 2020. [Read more](#)

## C. SURVEILLANCE

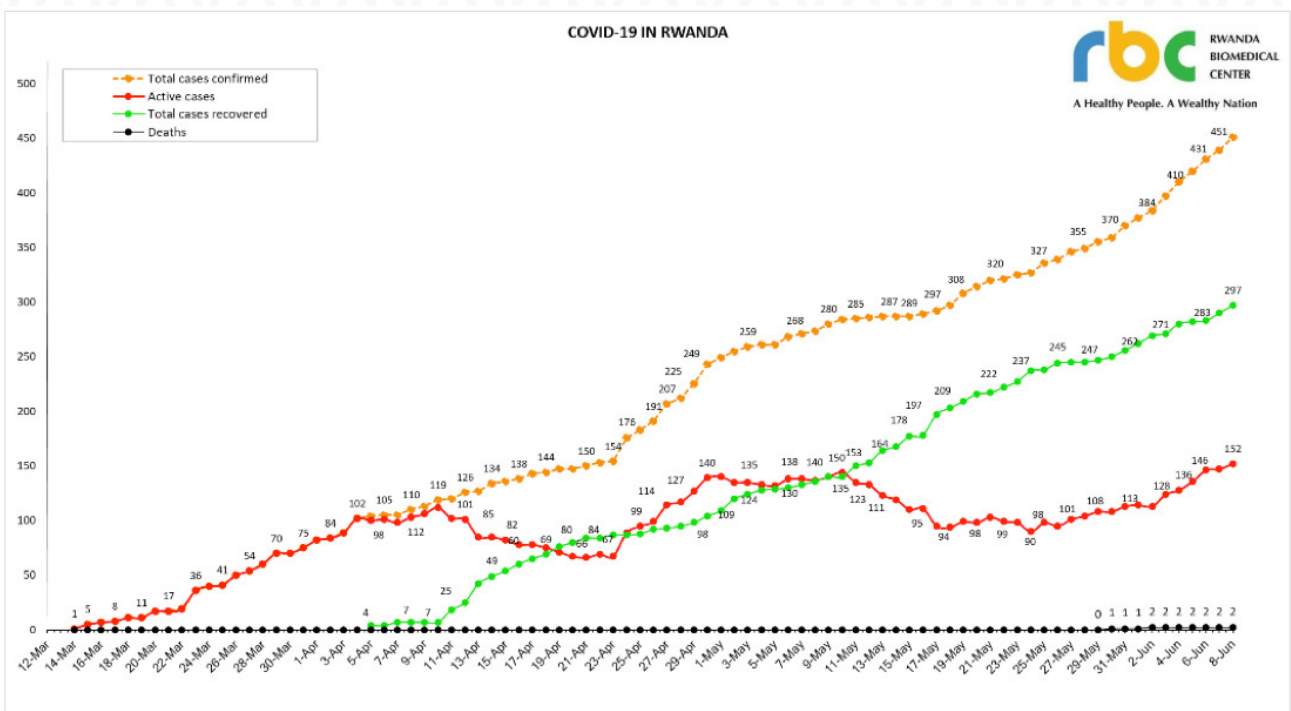
Table 1. Reported laboratory-confirmed, recovered COVID-19 cases and deaths. Data as of 8 June 2020

Dates	Total confirmed cases	Total confirmed new cases	Total active cases	Total recovered cases	Total recovered new cases	Total deaths	New deaths
8-June	451	12	152	297	7	2	0
7-June	439	8	147	290	7	2	0
6-June	431	11	146	283	1	2	0
5-June	420	10	136	282	2	2	0
4-June	410	13	128	280	9	2	0
3-June	397	13	124	271	2	2	0
2-June	384	7	113	269	7	2	1
1-June	377	7	114	262	6	1	0
31-May	370	11	113	256	6	1	0
30-May	359	4	108	250	3	1	1
29-May	355	6	108	247	2	0	0
28-May	349	3	104	245	0	0	0
27-May	346	7	101	245	1	0	0
26-May	339	3	95	244	6	0	0
25-May	336	9	98	238	1	0	0
24-May	327	2	90	237	10	0	0
23-May	325	4	98	227	5	0	0
22-May	321	1	99	222	5	0	0
21-May	320	6	103	217	1	0	0
20-May	314	6	98	216	7	0	0
19-May	308	11	99	209	6	0	0
18-May	297	5	94	203	6	0	0
17-May	292	3	95	197	19	0	0
16-May	289	2	111	178	1	0	0
15-May	287	0	110	177	9	0	0
14-May	287	0	119	168	4	0	0
13-May	287	1	123	164	11	0	0

Dates	Total confirmed cases	Total confirmed new cases	Total active cases	Total recovered cases	Total recovered new cases	Total deaths	New deaths
12-May	286	1	133	153	3	0	0
11-May	285	1	135	150	10	0	0
10-May	284	4	140	140	0	0	0
9-May	280	7	140	140	4	0	0
8-May	273	2	137	136	3	0	0
7-May	271	3	138	133	3	0	0
6-May	268	7	138	130	1	0	0
5-May	261	0	132	129	1	0	0
4-May	261	2	133	128	4	0	0
3-May	259	4	135	124	4	0	0
2-May	255	6	135	120	11	0	0
1-May	249	6	140	109	5	0	0
30-Apr	243	18	139	104	6	0	0
29-Apr	225	13	127	98	3	0	0
28-Apr	212	5	117	95	2	0	0
27-Apr	207	16	114	93	1	0	0
26-Apr	191	8	99	92	4	0	0
25-Apr	183	7	95	88	1	0	0
24-Apr	176	22	89	87	0	0	0
23-Apr	154	1	67	87	3	0	0
22-Apr	153	3	69	84	0	0	0
21-Apr	150	3	66	84	4	0	0
20-Apr	147	0	67	80	4	0	0
19-Apr	147	3	71	76	7	0	0
18-Apr	144	1	79	69	4	0	0
17-Apr	143	5	78	65	5	0	0
16-Apr	138	2	78	60	6	0	0
15-Apr	136	2	82	54	5	0	0
14-Apr	134	7	85	49	7	0	0
13-Apr	127	1	85	42	17	0	0
12-Apr	126	6	101	25	7	0	0
11-Apr	120	2	102	18	11	0	0
10-Apr	118	5	111	7	0	0	0
9-Apr	113	3	106	7	0	0	0
8-Apr	110	5	103	7	0	0	0
7-Apr	105	0	98	7	3	0	0
6-Apr	105	1	101	4	4	0	0
5-Apr	104	2	104	0	0	0	0
4-Apr	102	13	102	0	0	0	0
3-Apr	89	5	89	0	0	0	0
2-Apr	84	2	84	0	0	0	0
1-Apr	82	7	82	0	0	0	0
31-Mar	75	5	75	0	0	0	0
30-Mar	70	0	70	0	0	0	0
29-Mar	70	10	70	0	0	0	0
28-Mar	60	6	60	0	0	0	0
27-Mar	54	4	54	0	0	0	0
26-Mar	50	9	50	0	0	0	0
25-Mar	41	1	41	0	0	0	0
24-Mar	40	4	40	0	0	0	0
23-Mar	36	17	36	0	0	0	0

Dates	Total confirmed cases	Total confirmed new cases	Total active cases	Total recovered cases	Total recovered new cases	Total deaths	New deaths
22-Mar	19	2	19	0	0	0	0
21-Mar	17	0	17	0	0	0	0
20-Mar	17	6	17	0	0	0	0
19-Mar	11	0	11	0	0	0	0
18-Mar	11	3	11	0	0	0	0
17-Mar	8	1	8	0	0	0	0
16-Mar	7	2	7	0	0	0	0
15-Mar	5	4	5	0	0	0	0
14-Mar	1	1	1	0	0	0	0

Figure 4. Epidemic curve of COVID-19 cases, by date of report as of 8 June 2020



## D. RECOMMENDATIONS AND ADVICE FOR THE PUBLIC

On Saturday, 14 March 2020, Rwanda declared its first confirmed COVID19 case. The declaration was followed by a series of preventive [measures](#) that included an initial two-week lockdown, limiting unnecessary movement and visits outside homes except for essential services, working from home for public and private employees except for those providing essential services, and Closing borders except for goods and cargo and returning citizens followed by a mandatory 14-day quarantine, which was extended to 19 then [30 April 2020](#).

On 30th April, a [Cabinet Meeting](#) decided to lift progressively the lockdown after consideration of the country's progress in fighting the COVID-19 pandemic. The public is still required to respect the compulsory wear of face masks, physical distancing (at least 1,5 meter) and frequently wash hands with soap and clean water for at least 40 seconds or an alcohol-based hand sanitizer; greet people with a wave, bow, or nod.

On 18th May, an extraordinary Cabinet meeting chaired by President Paul Kagame approved new [measures](#) to further contain the spread of the COVID-19. Key decisions made include reopening other areas of the economy by 1st June as the government cautiously moves towards normalization. Among the general preventive measures that will remain in place include mass screening and testing for COVID-19 nationwide, frequently washing hands, physical distancing (1m at least) and wearing of safety masks in public at all times while movements are prohibited from 9 PM to 5 AM, extending the existing curfew time by one hour. These measures will be reviewed after 15 days.

The key symptoms of coronavirus are dry cough, shortness of breath, and fever. Anyone experiencing these symptoms or having had close contact with a confirmed case or contact with someone currently being evaluated for COVID-19, should call 114, the RBC toll-free number, send a WhatsApp message to +250788202080 for further guidance. Anyone who withholds information relevant for contact tracing or knowingly fails to report COVID-19 symptoms jeopardizes public safety and will be punished in accordance with applicable laws.

On 2nd June, President Kagame chaired a [Cabinet meeting](#) at Urugwiro Village to evaluate measures in place to stop the spread of COVID-19 and to discuss the way forward in the fight against the virus. The cabinet approved resumption of transport between provinces and motorcycle passenger service, which had been banned previously as COVID-19 preventive measures. However, cross-province transport to and from districts of Rusizi and Rubavu in western Rwanda and motorcycles carrying passengers in the two border towns are still prohibited. Following the above measures, the Ministry of Local Government [announced](#) a total lockdown for Rusizi District in Western Province from Thursday, 4th June. The lockdown is set to last for two weeks based on the assessment of COVID-19 outbreak in the region.

To view all technical guidance documents or frequently asked questions regarding COVID-19, please go to the Rwanda Biomedical Center [webpage](#).

Get the facts from reliable sources to help you accurately determine your risks so that you can take reasonable precautions ([see Frequently Asked Questions](#)).

Find out more about [measures](#) taken by the Government of Rwanda to mitigate COVID-19 in different sectors.

WHO periodically updates the [Global Surveillance for human infection with coronavirus disease \(COVID-19\)](#) document which includes case definitions.