



SUMMARY

I. COMPLETENESS AND TIMELINESS

- For Public Health Facilities Completeness: 91.7 % Timeliness: 83.9 %
- For Privates Health Facilities Completeness: 27.9 % Timeliness: 22.7 %
- **Overall Completeness: 78.0 %**
- **Timeliness: 70.8 %**

NB: District hospital catchment area with low reporting (below 50% timeliness): Muhima, Nyagatare, Kiziguro and Masaka hospitals.

II. Cases reported by Public and Private HFs:

- **Malaria:** 56,662 cases
- **Flu syndrome:** 15,939 cases
- **Non-bloody Diarrhoea:** 4,226 cases
- **Severe Pneumonia in children under five years:** 208 cases
- **Bloody diarrhoea:** 54 cases
- **Chicken pox:** 31 cases
- **Mumps:** 22 cases
- **AFP:** One case of Acute Flaccid Paralysis was notified from Yove HC of Kibogora hospital
- **Cholera:** Four suspected cases of Cholera were notified from Kigufi H of Gisenyi hospital
- **Food poisoning:** Three suspected cases were notified from Kibungo hospital
- **Measles:** Three suspected cases of measles were notified one case each from Gatara HC of Kibogora, Ruhuha HC of Nyamata, Rukoma Sake of Kibungo.

EPIDEMIC SURVEILLANCE AND RESPONSE WEEKLY REPORT

Week 49 from 4th to 10th December, 2017



ESR Division

HIGHLIGHT OF THE WEEK:

- **Trend of four priority diseases with highest morbidity in 2017:** The figure 1 shows the trend of cases of the highest morbidity through e-IDSR notified during the last 49 weeks, those include Malaria, Influenza like illness, Non blood diarrhea and severe pneumonia under five years.

III. Deaths reported nationally: 5 deaths notified countrywide

- Three deaths due to **Malaria** were notified from Nyamata, Kibagabaga and Remera Rukoma hospitals
- Two deaths due to **severe pneumonia under five years** were notified one death each from Kibilizi hospital and Nyabimata HC of Munini hospital

- **Meningococcal meningitis:** One suspected case of meningococcal meningitis was notified from Ngarama hospital.
- **Dog bites (rabies exposure):** 18 cases of dog bites (rabies exposure) were notified including six cases from Byumba hospital, Four cases from Kibogora hospital, three cases from Kirehe hospital, two cases from Byahi HC of Gisenyi and one case each from Gitare HC of Byumba, Kibilizi hospital and Ruli hospital
- **Typhoid fever:** 32 suspected cases of Typhoid fever were notified including 15 cases from Byumba hospital, 11 cases from Mahama refugee camp, five cases from Munini hospital and one case from Ngororero hospital
- **Viral Conjunctivitis:** Four cases of Viral conjunctivitis were notified two cases each from Prison Nsinda of Rwamagana and from Ndengeru Clinic

Editorial team: Dr J. Nyamusore, Dr L. Hakizimana, Dr J. Omolo, A. Kabeja, E. Nshimiyimana, H. Balisanga, F. Nizeyimana, A. Mutoni, A. Kapiteni, L. Ruyange, M. Utamuliza



EPIDEMIC SURVEILLANCE AND RESPONSE WEEKLY REPORT

1. High Morbidity diseases for the last 49 weeks, 2017

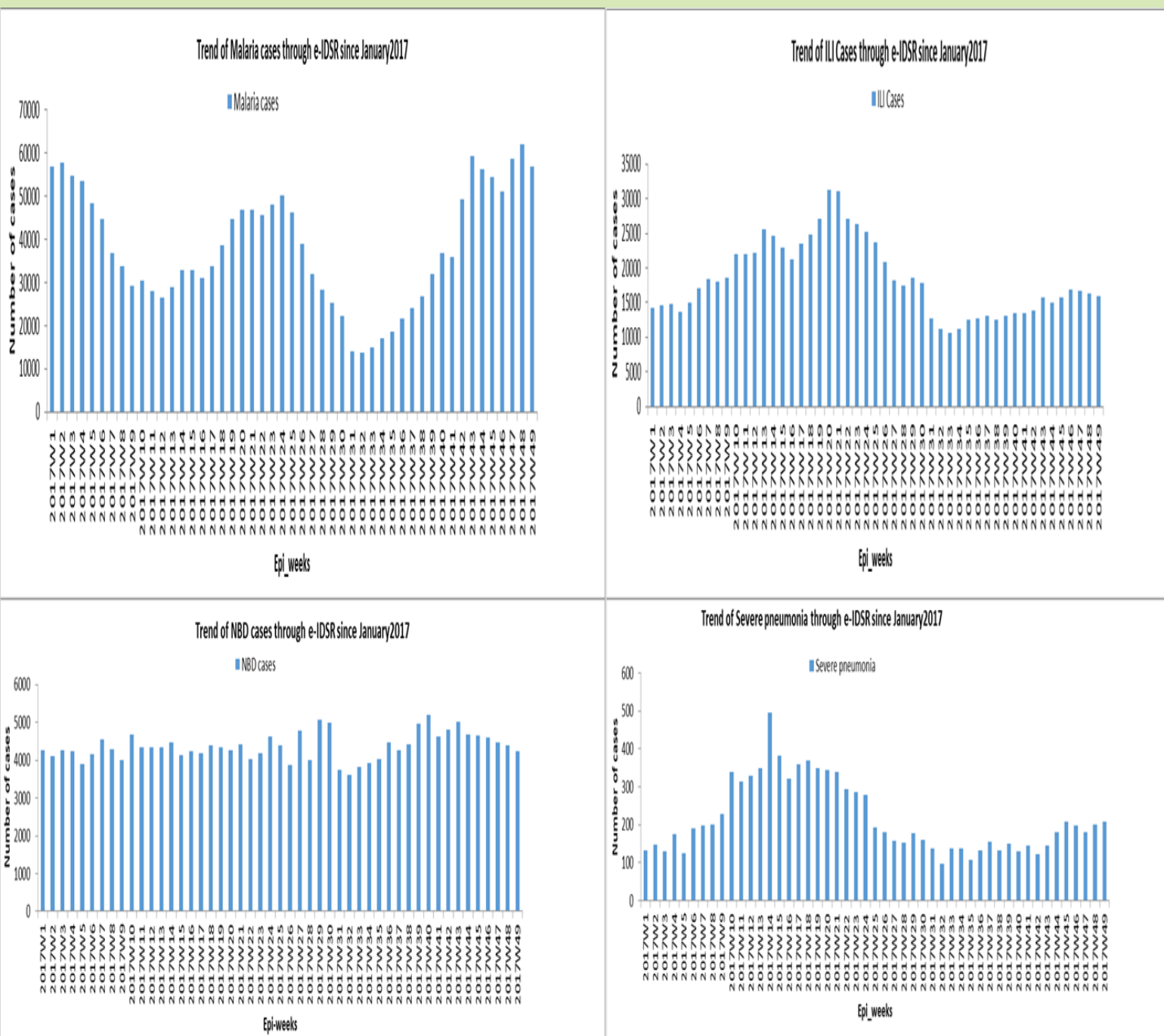


Fig 1. High morbidity diseases through e-IDSR in Rwanda

Source: Rwanda e-IDSR

EPIDEMIC SURVEILLANCE AND RESPONSE WEEKLY REPORT

Table 1: THE FOLLOWING 47 PUBLIC HEALTH FACILITIES DIDN'T SUBMIT THEIR REPORTS IN WEEK 49/2017

Province	Hospital	Health Facility		Province	Hospital	Health Facility
East	Kiziguro	Gitoki CS		South	Gakoma	Gakoma CS
East	Kiziguro	Rugarama (gatsibo) CS		South	Kabgayi	Gitarama CS
East	Nyagatare	Cyondo CS		South	Kabutare	Kabutare DH
East	Nyagatare	Kabuga (karama Nyagatare) CS		South	Kabutare	Kinyamakara CS
East	Nyagatare	Rwempasha CS		South	Kabutare	Mukura (Huye) CS
East	Nyamata	Mwogo CS		South	Kabutare	Ruhashya CS
East	Rwamagana	Gahengeri CS		South	Kabutare	Simbi CS
East	Rwamagana	Gishari(Police) CS		South	Kibilizi	Kigembe CS
East	Rwinkwavu	Kabarondo (kayonza) CS		South	Nyanza	Gahombo CS
East	Rwinkwavu	Ruramira CS		South	Nyanza	Gatagara (Nyanza) CS
Kigali City	Kibagabaga	Avega Kigali CS		South	Nyanza	Hanika I (NYANZA) CS
Kigali City	Muhima	Butamwa CS		South	Nyanza	Mututu CS
Kigali City	Muhima	PCK(Gitega Pris)		South	Nyanza	Mweya CS
North	Byumba	Bwisige CS		South	Remera Rukoma	Musambira CS
North	Byumba	Giti CS		South	Remera Rukoma	Nyamiyaga (Kamonyi) CS
North	Kinihira	Kisaro CS		West	Bushenge	Bushenge CS
North	Kinihira	Muyanza CS		West	Bushenge	Mugera CS
North	Kinihira	Tare CS		West	Gisenyi	Karambo (rubavu) CS
North	Nemba	Cyabingo CS		West	Mibilizi	Mibilizi CS
North	Ruhengeri	Gasiza (musanze) CS		West	Mibilizi	Mibilizi DH
North	Ruhengeri	Kinigi CS		West	Mibilizi	Nyakabuye CS
North	Ruhengeri	Muhoza (Ruhengeri) CS		West	Shyira	Nyakiliba CS
North	Ruhengeri	Murandi CS				
North	Rutongo	Kinini CS				
North	Rutongo	Murambi CS				

EPIDEMIC SURVEILLANCE AND RESPONSE WEEKLY REPORT

Table 2. CASES NOTIFIED DURING WEEK 49, 2017

Hospital	Public Health Facilities			Private Health Facilities			IDSR Priority diseases cases recorded																						
	Expected	Completeness	Timeliness	Expected	Completeness	Timeliness	Non bloody Diarrhoea	Flu syndrom e	Malaria	Severe Pneumonia for under five years	Acute Flaccid Paralysis	Bloody Diarrhea	Chicken Pox	Cholera	Diphtheria	Epidemic Typhus	Food poisoning	Hemorrhagic fever	Measles	Meningitis	Mumps	Neonatal tetanus	Plague	dog bites (Rabies exposure)	Rubella	Typhoid fever	Viral Conjunctivitis	Whooping Cough	Yellow fever
Gahini	9	100.0	100.0	3	66.7	66.7	43	272	3580	2	0	0	0	0	0	0	0	0	0	0	0	0	0	0	0	0	0	0	0
Kibungo	13	100.0	100.0	1	100.0	100.0	58	68	5514	5	0	0	0	0	0	0	3	0	1	0	0	0	0	0	0	0	0	0	0
Kirehe	19	100.0	94.7	1	0.0	0.0	278	1443	694	21	0	2	2	0	0	0	0	0	0	0	0	0	0	3	0	11	0	0	0
Kiziguro	13	84.6	53.8	3	0.0	0.0	75	272	3420	0	0	0	0	0	0	0	0	0	0	0	0	0	0	0	0	0	0	0	0
Ngarama	8	100.0	75.0	0			51	490	1016	0	0	0	0	0	0	0	0	0	0	0	1	0	0	0	0	0	0	0	0
Nyagatare	22	86.4	68.2	17	11.8	11.8	132	258	174	4	0	1	2	0	0	0	0	0	0	0	0	0	0	0	0	0	0	0	0
Nyamata	17	94.1	94.1	1	0.0	0.0	107	563	7269	4	0	0	1	0	0	0	0	0	0	1	0	2	0	0	0	0	0	0	0
Rwamagana	16	87.5	62.5	4	0.0	0.0	161	1408	4345	3	0	0	0	0	0	0	0	0	0	0	0	0	0	0	0	0	2	0	0
Rwinkwavu	8	75.0	75.0	2	0.0	0.0	18	39	1720	1	0	0	0	0	0	0	0	0	0	0	0	0	0	0	0	0	0	0	0
Kibagabaga	17	94.1	88.2	30	43.3	36.7	204	1290	2217	9	0	1	3	0	0	0	0	0	0	0	1	0	0	0	0	0	0	0	0
Masaka	11	100.0	100.0	20	15.0	15.0	50	302	1556	3	0	0	0	0	0	0	0	0	0	0	0	0	0	0	0	0	0	0	0
Muhima	12	83.3	66.7	28	32.1	21.4	95	333	1256	11	0	4	4	0	0	0	0	0	0	0	2	0	0	0	0	0	0	0	0
Kacyiru DH	1	100.0	100.0	0			0	0	10	0	0	0	0	0	0	0	0	0	0	0	0	0	0	0	0	0	0	0	0
Butaro	20	100.0	95.0	1	100.0	100.0	187	220	101	10	0	1	0	0	0	0	0	0	0	0	0	0	0	1	0	0	0	0	0
Byumba	26	92.3	84.6	3	0.0	0.0	101	761	320	13	0	0	3	0	0	0	0	0	0	0	8	0	0	6	0	15	0	0	0
Kinhiira	10	70.0	70.0	1	0.0	0.0	67	26	69	2	0	0	0	0	0	0	0	0	0	0	0	0	0	0	0	0	0	0	0
Nemba	16	93.8	81.3	0			116	76	130	4	0	3	0	0	0	0	0	0	0	0	1	0	0	0	0	0	0	0	0
Ruhengeri	17	76.5	64.7	3	33.3	33.3	150	404	83	23	0	1	0	0	0	0	0	0	0	0	2	0	0	0	0	0	0	0	0
Ruli	9	100.0	100.0	0			52	152	207	4	0	3	1	0	0	0	0	0	0	0	0	0	0	1	0	0	0	0	0
Rutongo	13	84.6	76.9	0			68	350	526	1	0	0	0	0	0	0	0	0	0	0	0	0	0	0	0	0	0	0	0
Gakoma	6	83.3	83.3	1	100.0	100.0	27	145	474	1	0	0	0	0	0	0	0	0	0	0	0	0	0	0	0	0	0	0	0
Gitwe	9	100.0	66.7	0			30	151	1530	1	0	0	0	0	0	0	0	0	0	0	0	0	0	0	0	0	0	0	0
Kabgayi	18	94.4	94.4	4	0.0	0.0	124	716	1536	5	0	1	8	0	0	0	0	0	0	0	0	0	0	0	0	0	0	0	0
Kabutare	18	72.2	55.6	2	0.0	0.0	121	388	503	5	0	13	0	0	0	0	0	0	0	0	0	0	0	0	0	0	0	0	0
Kaduha	10	100.0	100.0	0			91	271	378	0	0	0	0	0	0	0	0	0	0	0	0	0	0	0	0	0	0	0	0
Kibilizi	10	90.0	80.0	0			121	255	1352	2	0	3	0	0	0	0	0	0	0	0	0	0	0	1	0	0	0	0	0
Kigeme	12	100.0	83.3	2	100.0	50.0	95	569	550	3	0	3	1	0	0	0	0	0	0	0	2	0	0	0	0	0	0	0	0
Munini	17	100.0	88.2	1	100.0	100.0	146	644	688	0	0	0	0	0	0	0	0	0	0	0	0	0	0	0	0	5	0	0	0
Nyanza	18	72.2	72.2	1	0.0	0.0	118	278	1016	4	0	2	0	0	0	0	0	0	0	0	0	0	0	0	0	0	0	0	0
Remera Rukoma	14	85.7	85.7	3	0.0	0.0	50	568	2477	1	0	2	4	0	0	0	0	0	0	0	0	0	0	0	0	0	0	0	0
Ruhango	8	100.0	100.0	4	0.0	0.0	95	302	2028	0	0	5	0	0	0	0	0	0	0	0	0	0	0	0	0	0	0	0	0
Bushenge	8	75.0	62.5	0			37	269	1014	2	0	0	0	0	0	0	0	0	0	0	0	0	0	0	0	0	0	0	0
Gihundwe	9	100.0	100.0	2	100.0	100.0	48	373	672	4	0	0	1	0	0	0	0	0	0	0	0	0	0	0	0	0	0	0	0
Gisenyi	15	93.3	86.7	9	22.2	22.2	262	563	267	19	0	0	1	4	0	0	0	0	0	0	3	0	0	2	0	0	2	0	0
Kabaya	10	100.0	80.0	2	0.0	0.0	32	122	162	0	0	0	0	0	0	0	0	0	0	0	0	0	0	0	0	0	0	0	0
Kibogora	14	100.0	100.0	0			88	258	2527	9	1	0	0	0	0	0	0	0	0	1	0	0	0	4	0	0	0	0	0
Kibuye	13	100.0	92.3	0			86	234	430	5	0	7	0	0	0	0	0	0	0	0	0	0	0	0	0	0	0	0	0
Kirinda	6	100.0	100.0	0			29	79	508	4	0	0	0	0	0	0	0	0	0	0	0	0	0	0	0	0	0	0	0
Mibilizi	12	75.0	75.0	3	66.7	0.0	103	97	2598	2	0	0	0	0	0	0	0	0	0	0	0	0	0	0	0	0	0	0	0
Mugonero	7	100.0	100.0	0			34	132	491	4	0	0	0	0	0	0	0	0	0	0	0	0	0	0	0	1	0	0	0
Muhororo	16	100.0	100.0	1	100.0	100.0	86	138	321	2	0	0	0	0	0	0	0	0	0	0	0	0	0	0	0	0	0	0	0
Murunda	18	100.0	94.4	0			279	314	841	11	0	0	0	0	0	0	0	0	0	0	0	0	0	0	0	0	0	0	0
Shyira	17	94.1	88.2	1	0.0	0.0	106	330	46	4	0	2	0	0	0	0	0	0	0	0	1	0	0	0	0	0	0	0	0
CHUB	1	100.0	100.0	0			2	14	7	0	0	0	0	0	0	0	0	0	0	0	0	0	0	0	0	0	0	0	0
CHUK	1	100.0	100.0	0			3	2	21	0	0	0	0	0	0	0	0	0	0	0	0	0	0	0	0	0	0	0	0
Rwanda Military Hc	1	100.0	100.0	0			0	0	20	0	0	0	0	0	0	0	0	0	0	0	0	0	0	0	0	0	0	0	0
	565	91.7	83.9	154	27.9	22.7	4226	15939	56662	208	1	54	31	4	0	0	3	0	3	1	22	0	0	18	0	32	4	0	0