



## SUMMARY

### I. COMPLETENESS AND TIME-LINESS

- For Public Health Facilities  
Completeness: 91.0% Timeliness: 84.8 %
- For Privates Health Facilities  
Completeness: 28.6 % Timeliness: 22.1 %
- Overall Completeness: 77.6 %  
Timeliness: 71.3 %

**NB:** District hospitals cathment area with low timeliness (below 70%) are Kabutare, Mibilizi, Gakoma and Nyagatare.

### II. Cases reported by Public and Private HFs:

- **Malaria:** 61,951 cases
- **Flu syndrome:** 16,279 cases
- **Non-bloody Diarrhoea:** 4,382 cases
- **Severe Pneumonia in children under five years:** 200 cases
- **Bloody diarrhoea:** 56 cases
- **Chicken pox:** 41 cases
- **Mumps:** 21 cases
- **AFP:** One case of Acute Flaccid Paralysis was notified from Shaba HC of Kigeme hospital

# EPIDEMIC SURVEILLANCE AND RESPONSE WEEKLY REPORT

Week 48 from 27<sup>th</sup> November to 3<sup>rd</sup> December, 2017



ESR Division

## HIGHLIGHT OF THE WEEK:

### 1. Trend of four priority diseases with highest morbidity in 2017:

The figure1 shows the trend of cases of the highest morbidity through e-IDSR notified during the last 48 weeks, those include Malaria, Influenza like illness, Non blood diarrhea and severe pneumonia under five years.

### III. Deaths reported: 5 deaths notified countrywide

- Three deaths due to **Non Bloody diarrhea** were notified one death each from Nyamata hospital, Gashora HC of Nyamata hospital and Rwaza HC of Ruhengeri hospital
- Two deaths due to **Malaria** were notified from Nyamata hospital.

- **Cholera:** Three suspected cases of Cholera were notified including two cases from Rusizi HC and one case from Gisenyi HC of Gisenyi hospital
- **Measles:** Five suspected cases of measles were notified one case each from Kabaya HC, Kibilizi HC of Kibilizi hospital, Kivu HC of Munini hospital, Mashasha HC of Mibilizi hospital, Nyarurama HC of Ruhango Hospital
- **Meningococcal meningitis:** One suspected case of meningococcal meningitis was notified from Ngarama hospital.
- **Dog bites (rabies exposure):** Three cases of dog bites (rabies exposure) were notified including one case each from Kigeme, Kirehe and Mugonero hospitals
- **Typhoid fever:** Two suspected cases of Typhoid fever were notified one case each from Kigeme hospital and Gisiza HC of Byumba hospital
- **Viral Conjunctivitis:** three cases of Viral conjunctivitis were notified including two cases from Prison Nsinda of Rwamagana and one case from Ndengeri Clinic

**Editorial team:** Dr J. Nyamusore, Dr J. L. Hakizimana, Dr J. Omolo, A. Kabeja, E. Nshimiyimana, H. Balisanga, F. Nizeyimana, A. Mutoni, A. Kapiteni, L. Ruyange, M. Utamuliza



# EPIDEMIC SURVEILLANCE AND RESPONSE WEEKLY REPORT

## 1. High Morbidity diseases for the last 48 weeks, 2017

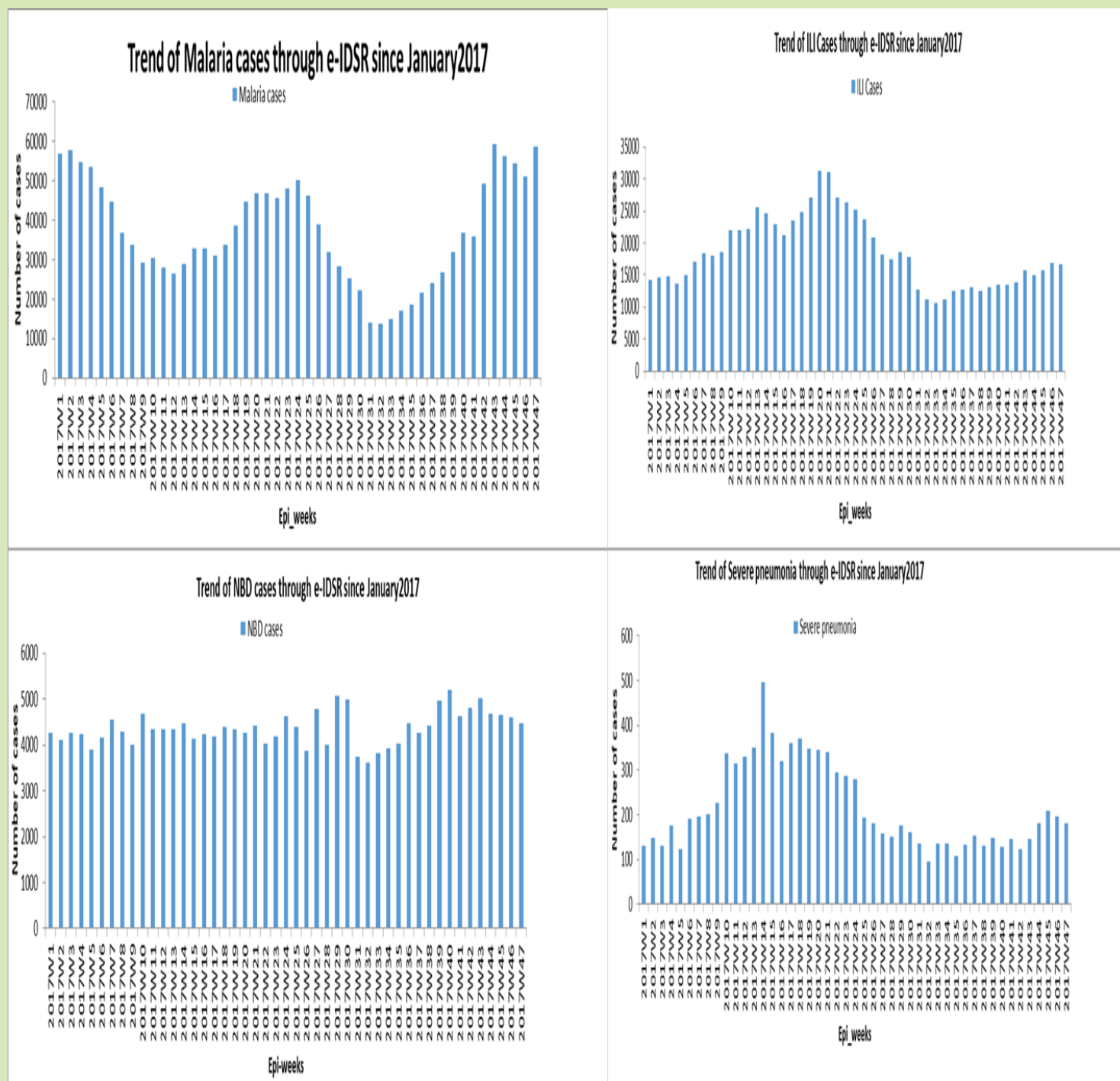


Fig 1. High morbidity diseases through e-IDSR in Rwanda

Source: Rwanda e-IDSR

# EPIDEMIC SURVEILLANCE AND RESPONSE WEEKLY REPORT

Table 1: THE FOLLOWING 51 PUBLIC HEALTH FACILITIES DIDN'T SUBMIT THEIR REPORTS IN WEEK 48/2017

Province	Hospital	Health Facility		Province	Hospital	Health Facility
East	Gahini	Mukarange CS		South	Gakoma	Gakoma DH
East	Kirehe	Mahama Refugee Camp HC		South	Gakoma	Gikonko (Gisagara) CS
East	Kiziguro	Kiziguro DH		South	Kabgayi	Gitega (kibangu) CS
East	Kiziguro	Rugarama (gatsibo) CS		South	Kabutare	Busoro-gishamvu CS
East	Nyagatare	Muhambo CS		South	Kabutare	Karama (huye) CS
East	Nyagatare	Nyagatare Prison		South	Kabutare	Maraba (huye) CS
North	Byumba	Bwisige CS		South	Kabutare	Mukura (Huye) CS
North	Byumba	Munyinya CS		South	Kabutare	Rubona (huye) CS
North	Kinihira	Muyanaza CS		South	Kabutare	Ruhashya CS
North	Kinihira	Tare CS		South	Kabutare	Rusatira-kinazi CS
North	Nemba	Busengo CS		South	Kabutare	Simbi CS
North	Nemba	Cyabingo CS		South	Kaduha	Kibumbwe CS
North	Ruhengeri	Murandi CS		South	Kibilizi	Kigembe CS
North	Ruhengeri	Prison Ruhengeri DISP		South	Munini	Maraba (nyaruguru) CS
North	Ruhengeri	Shingiro CS		South	Munini	Nyamyumba CS
North	Rutongo	Murambi CS		South	Munini	Nyantanga CS
North	Rutongo	Shyorongi CS		South	Nyanza	Cyaratsi CS
West	Gihundwe	Giheke CS		South	Nyanza	Hanika I (NYANZA) CS
West	Kirinda	Kirinda DH		South	Nyanza	Mututu CS
West	Mibilizi	Mibilizi CS		South	Nyanza	Nyarusange (nyanza) CS
West	Mibilizi	Mibilizi DH		South	Remera Rukoma	Mugina CS
West	Mibilizi	Mushaka CS		South	Ruhango	Kinazi CS
West	Mibilizi	Nyakabuye CS		Kigali City	Kibagabaga	Avega Kigali CS
West	Murunda	Karumbi CS		Kigali City	Kibagabaga	Nduba CS
West	Murunda	Kayove CS		Kigali City	Muhima	PCK(Gitega Pris)
West	Shyira	Arusha CS				

# EPIDEMIC SURVEILLANCE AND RESPONSE WEEKLY REPORT

Province	Hospital	Public Health Facilities			Private Health Facilities			IDSR Priority diseases cases recorded																											
		Expected	Completeness	Timeliness	Expected	Completeness	Timeliness	Non bloody Diarrhoea	Flu syndrome	Malaria	Severe Pneumonia for under five years	Acute Flaccid Paralysis	Bloody Diarrhea	Chicken Pox	Cholera	Diphtheria	Epidemic Typhus	Food poisoning	Hemorrhagic fever	Measles	Meningitis	Mumps	Neonatal tetanus	Plague	dog bites (Rabies exposure)	Rubella	Typhoid fever	Viral Conjunctivitis	Whooping Cough	Yellow fever					
East	Gahini	9	88.9	77.8	3	66.7	66.7	71	169	3166	2	0	0	5	0	0	0	0	0	0	0	0	0	0	0	0	0	0	0	0	0				
East	Kibungo	13	100.0	100.0	1	100.0	0.0	56	76	6091	1	0	0	0	0	0	0	0	0	0	0	0	0	0	0	0	0	0	0	0	0				
East	Kirehe	19	94.7	89.5	1	0.0	0.0	250	1372	983	15	0	2	0	0	0	0	0	0	0	0	0	0	0	0	1	0	0	0	0	0				
East	Kiziguro	13	84.6	76.9	3	0.0	0.0	95	252	2790	0	0	0	0	0	0	0	0	0	0	0	0	0	0	0	0	0	0	0	0	0				
East	Ngarara	8	100.0	87.5	0			62	350	764	0	0	0	0	0	0	0	0	0	0	0	1	0	0	0	0	0	0	0	0	0				
East	Nyagatare	22	90.9	68.2	17	11.8	11.8	156	262	156	2	0	1	4	0	0	0	0	0	0	0	0	0	0	0	0	0	0	0	0	0				
East	Nyamata	17	100.0	94.1	1	0.0	0.0	131	757	9065	7	0	0	0	0	0	0	0	0	0	0	0	0	0	0	0	0	0	0	0	0				
East	Rwamagana	16	100.0	81.3	4	0.0	0.0	174	1588	5587	5	0	0	0	0	0	0	0	0	0	0	0	0	0	0	0	0	0	2	0	0				
East	Rwinkwavu	8	100.0	100.0	2	0.0	0.0	46	132	2930	7	0	0	0	0	0	0	0	0	0	0	0	0	0	0	0	0	0	0	0	0				
Kigali City	Kacyiru	1	100.0	100.0	0			0	0	19	0	0	0	0	0	0	0	0	0	0	0	0	0	0	0	0	0	0	0	0	0				
Kigali City	Kibagabaga	17	88.2	88.2	30	26.7	20.0	171	1071	1992	4	0	1	2	0	0	0	0	0	0	0	4	0	0	0	0	0	0	0	0	0				
Kigali City	Masaka	11	100.0	100.0	20	25.0	25.0	57	351	1805	5	0	0	0	0	0	0	0	0	0	0	0	0	0	0	0	0	0	0	0	0				
Kigali City	Muhima	12	91.7	83.3	28	46.4	28.6	76	401	1298	2	0	3	2	0	0	0	0	0	0	0	1	0	0	0	0	0	0	0	0	0				
North	Butaro	20	100.0	100.0	1	100.0	100.0	165	174	94	7	0	9	2	0	0	0	0	0	0	0	4	0	0	0	0	0	0	0	0	0				
North	Byumba	26	92.3	73.1	3	0.0	0.0	93	698	358	14	0	3	10	0	0	0	0	0	0	0	5	0	0	0	0	0	1	0	0	0				
North	Kinshira	10	80.0	70.0	1	0.0	0.0	59	21	54	0	0	0	0	0	0	0	0	0	0	0	1	0	0	0	0	0	0	0	0	0				
North	Nemba	16	87.5	81.3	0			117	74	113	2	0	3	0	0	0	0	0	0	0	0	2	0	0	0	0	0	0	0	0	0				
North	Ruhengeri	17	82.4	70.6	3	33.3	33.3	158	548	99	14	0	2	0	0	0	0	0	0	0	0	0	0	0	0	0	0	0	0	0	0				
North	Ruli	9	100.0	100.0	0			33	114	118	3	0	5	0	0	0	0	0	0	0	0	0	0	0	0	0	0	0	0	0	0				
North	Rutongo	13	84.6	84.6	0			112	367	478	7	0	0	0	0	0	0	0	0	0	0	0	0	0	0	0	0	0	0	0	0				
Referral H	CHUB	6	66.7	66.7	1	0.0	0.0	3	18	6	1	0	0	0	0	0	0	0	0	0	0	0	0	0	0	0	0	0	0	0	0				
Referral H	CHUK	9	100.0	77.8	0			0	0	12	0	0	0	0	0	0	0	0	0	0	0	0	0	0	0	0	0	0	0	0	0				
Referral H	Rwanda Militar	18	94.4	88.9	4	25.0	25.0	0	6	21	0	0	0	0	0	0	0	0	0	0	0	0	0	0	0	0	0	0	0	0	0				
South	Gakoma	18	55.6	50.0	2	0.0	0.0	55	199	1076	0	0	0	0	0	0	0	0	0	0	0	0	0	0	0	0	0	0	0	0	0				
South	Gitwe	10	90.0	80.0	0			30	130	1475	0	0	1	0	0	0	0	0	0	0	0	0	0	0	0	0	0	0	0	0	0				
South	Kabagayi	10	90.0	90.0	0			142	765	1417	3	0	0	7	0	0	0	0	0	0	0	0	0	0	0	0	0	0	0	0	0				
South	Kabutare	12	100.0	100.0	2	100.0	50.0	65	305	466	10	0	3	0	0	0	0	0	0	0	0	0	0	0	0	0	0	0	0	0	0				
South	Kaduha	17	82.4	82.4	1	100.0	100.0	88	213	323	0	0	1	0	0	0	0	0	0	0	0	0	0	0	0	0	0	0	0	0	0				
South	Kibilizi	18	77.8	72.2	1	0.0	0.0	89	364	2416	4	0	1	2	0	0	0	0	0	0	1	0	0	0	0	0	0	0	0	0	0				
South	Kigeme	14	92.9	92.9	3	0.0	0.0	76	361	502	5	1	0	2	0	0	0	0	0	0	0	1	0	0	0	1	0	1	0	0	0				
South	Munini	8	87.5	87.5	4	0.0	0.0	130	717	725	1	0	0	0	0	0	0	0	0	0	1	0	1	0	0	0	0	0	0	0	0				
South	Nyanza	8	100.0	100.0	0			97	321	925	3	0	0	2	0	0	0	0	0	0	0	0	0	0	0	0	0	0	0	0	0				
South	Remera Rukon	9	88.9	77.8	2	100.0	50.0	83	665	3183	0	0	4	1	0	0	0	0	0	0	0	0	0	0	0	0	0	0	0	0	0				
South	Ruhango	15	100.0	93.3	9	22.2	22.2	65	264	1994	5	0	2	0	0	0	0	0	0	0	1	0	0	0	0	0	0	0	0	0	0				
West	Bushenge	10	100.0	90.0	2	0.0	0.0	89	200	822	7	0	0	0	0	0	0	0	0	0	0	0	0	0	0	0	0	0	0	0	0				
West	Gihundwe	14	100.0	100.0	0			74	386	636	6	0	0	0	2	0	0	0	0	0	0	0	0	0	0	0	0	0	0	0	0				
West	Gisenyi	13	100.0	100.0	0			319	704	264	25	0	0	1	1	0	0	0	0	0	0	0	0	0	0	0	0	0	1	0	0				
West	Kabaya	6	83.3	83.3	0			43	135	109	0	0	0	0	0	0	0	0	0	0	1	0	0	0	0	0	0	0	0	0	0				
West	Kibogora	12	66.7	58.3	3	66.7	66.7	118	274	2217	4	0	0	0	0	0	0	0	0	0	0	0	0	0	0	0	0	0	0	0	0				
West	Kibuye	7	100.0	100.0	0			86	197	432	8	0	2	0	0	0	0	0	0	0	0	0	0	0	0	0	0	0	0	0	0				
West	Kirinda	16	100.0	100.0	1	100.0	100.0	24	96	533	0	0	0	0	0	0	0	0	0	0	0	0	0	0	0	0	0	0	0	0	0				
West	Mibilizi	18	88.9	77.8	0			94	51	2617	2	0	0	0	0	0	0	0	0	0	1	0	0	0	0	0	0	0	0	0	0				
West	Mugonero	17	94.1	94.1	1	0.0	0.0	48	154	554	11	0	0	0	0	0	0	0	0	0	0	0	0	0	0	1	0	0	0	0	0				
West	Muhororo	1	100.0	100.0	0			69	219	264	0	0	0	0	0	0	0	0	0	0	0	0	0	0	0	0	0	0	0	0	0				
West	Murunda	1	100.0	100.0	0			282	317	954	5	0	0	0	0	0	0	0	0	0	0	0	0	0	0	0	0	0	0	0	0				
West	Shyira	1	100.0	100.0	0			131	441	48	3	0	13	1	0	0	0	0	0	0	0	0	2	0	0	0	0	0	0	0	0				
Total		565	91.0	84.8	154	28.6	22.1	4382	16279	61951	200	1	56	41	3	0	0	0	0	0	5	1	21	0	0	3	0	2	3	0	0				