



## SUMMARY

### I. COMPLETENESS AND TIMELINESS

- For Public Health Facilities Completeness: 88.7 % Timeliness: 61.7 %
- For Private Health Facilities Completeness: 23.4 % Timeliness: 11.0 %
- Overall Completeness: 74.7 % Timeliness: 50.8 %

### II. Cases reported by Public and Private HFs:

- **Malaria:** 59,103 cases
- **Flu syndrome:** 15,734 cases
- **Non-bloody Diarrhoea:** 5,004 cases
- **Severe Pneumonia in children under five years:** 146 cases
- **Bloody diarrhoea:** 63 cases
- **Chicken pox:** 44 cases
- **Mumps:** 40 cases
- **AFP:** One case of Acute Flaccid paralysis was notified from Muhororo HC
- **Cholera:** 7 cases of Cholera were notified including 5 cases from Kigufi HC of Gisenyi hospital and one case each from Gisenyi hospital and Nkanka HC of Gihundwe hospital.
- **Food poisoning:** 7 cases were notified including four cases from Rwankeri HC of Shyira and three cases from Gisenyi.
- **Measles:** 8 suspected cases of measles were notified including two cases from Musha HC Rwamagana hospital and one case each from Gikondo HC of Masaka, Kabuga HC of Nyagatare, Kibeho HC of Munini, Muhororo HC and Muhororo hospital

# EPIDEMIC SURVEILLANCE AND RESPONSE WEEKLY REPORT

Week 43 from 23<sup>rd</sup> to 29<sup>th</sup> October, 2017



ESR Division

## HIGHLIGHT OF THE WEEK:

1. Trend of four priority diseases with highest morbidity in 2017: The figure 2 shows the trend of cases of the highest morbidity through e-IDSR notified during the last 43 weeks, those include Malaria, Influenza like illness, Non blood diarrhea and severe pneumonia under five years.

### III. Deaths reported nationally: 14 deaths notified countrywide

- 12 deaths due to **Malaria** were notified including three cases from Gihundwe hospital, two cases from Nyamata hospital and one case each from Agahabwa HC of Kibilizi, Musha HC of Rwamagana, Rukara HC of Gahini, Gisenyi, Kabgayi, Masaka and Mibilizi hospitals
- 2 deaths due to **Non Bloody diarrhea** were notified one case each from Kibayi HC of Kibilizi hospital and from Kibagabaga hospital

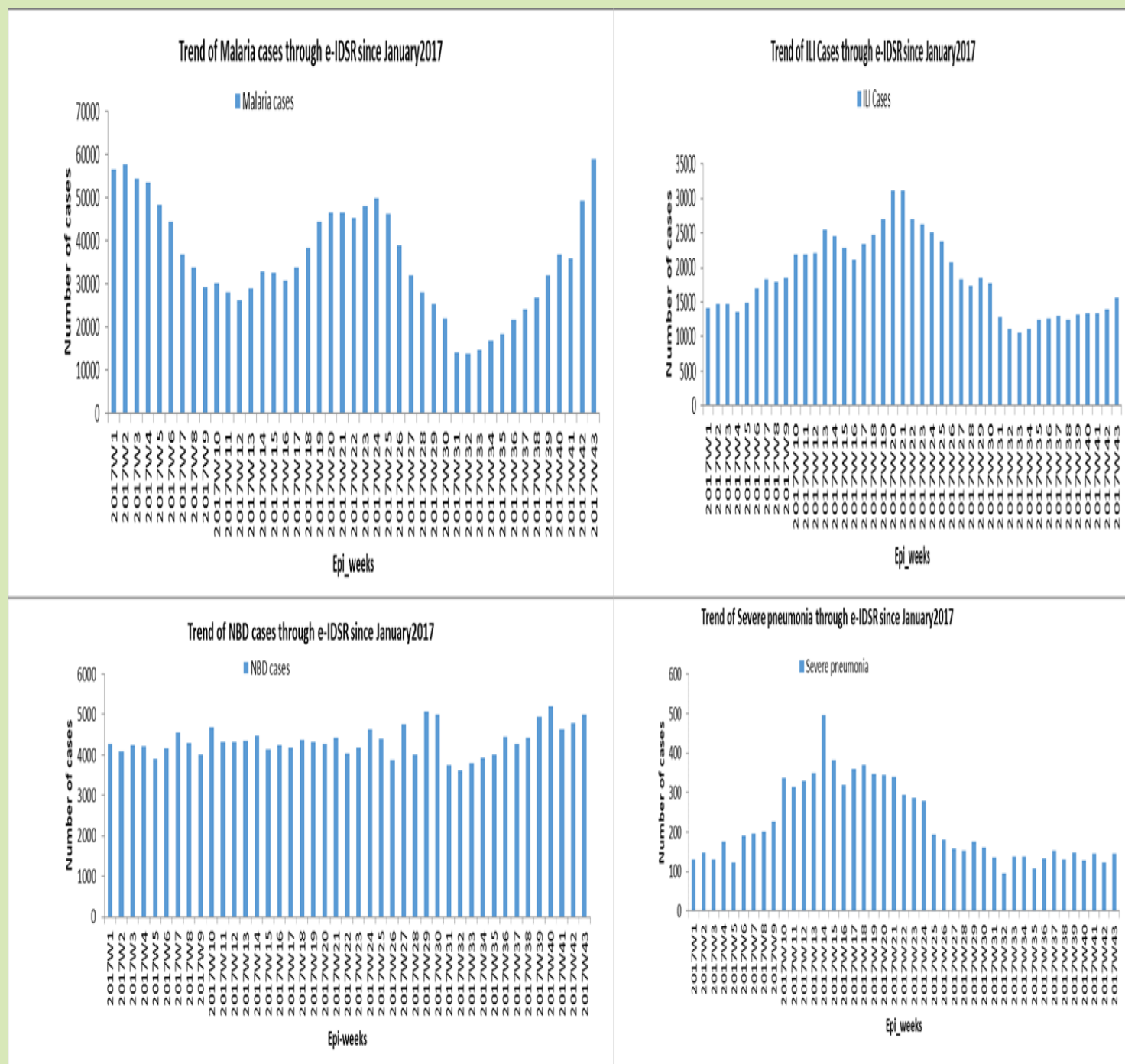
- **Meningococcal meningitis:** One suspected case was notified from Ngarama hospital
- **Dog bites (rabies exposure):** 18 cases of dog bites (rabies exposure) were notified including four cases from Nyanza hospital, three cases from Kibungo hospital, two cases each from Gakoma and Kirehe hospitals, one case each from Mbuga HC of Kigeme, Nzungwa HC of Nyamata, Kibogora, Kibuye, Mugonero, Rwinkwavu and Shyira hospitals
- **Typhoid fever:** 28 suspected cases of Typhoid fever were notified including 22 cases from Mahama refugee camp, two cases from Gisiza HC of Byumba, two cases from Rwempasha HC of Nyagatare and one case each from Bushara HC from Byumba and Kirehe hospital

**Editorial team:** Dr J. Nyamusore, Dr L. Hakizimana, Dr J. Omolo, A. Kabeja, E. Nshimiimana, H. Balisanga, F. Nizeyimana, A. Mutoni, A. Kapiteni, L. Ruyange, M. Utumuliza



# EPIDEMIC SURVEILLANCE AND RESPONSE WEEKLY REPORT

## High Morbidity diseases for the last 43 weeks, 2017



High morbidity diseases through e-IDSR in Rwanda  
Source: Rwanda e-IDSR

# EPIDEMIC SURVEILLANCE AND RESPONSE WEEKLY REPORT

Table 1: THE FOLLOWING 65 PUBLIC HEALTH FACILITIES DIDN'T SUBMIT THEIR REPORTS IN WEEK

Province	Hospital	Health Facility		Province	Hospital	Health Facility
East	Gahini	Rutare (kayonza) CS		South	Gakoma	Save CS
East	Kibungo	Jarama CS		South	Gitwe	Munanira CS
East	Kibungo	Rukumberi CS		South	Kabutare	Karama (huye) CS
East	Kirehe	Mahama CS		South	Kabutare	Mukura (Huye) CS
East	Kirehe	Mahama Refugee Camp HC		South	Kabutare	Rubona (huye) CS
East	Kirehe	Nyabitare (kirehe) CS		South	Kabutare	Rwaniro CS
East	Kirehe	Rwantonde CS		South	Kabutare	Simbi CS
East	Kiziguro	Gakenke CS		South	Kibilizi	Kibilizi (gisagara) CS
East	Kiziguro	Kiziguro (gatsibo) CS		South	Munini	Coko CS
East	Ngarama	Gituza CS		South	Munini	Maraba (nyaruguru) CS
East	Nyagatare	Bugaragara CS		South	Munini	Munini (nyaruguru) CS
East	Nyagatare	Cyondo CS		South	Munini	Ngera CS
East	Nyagatare	Kagitumba CS		South	Munini	Nyabimata CS
East	Nyagatare	Muhambo CS		South	Munini	Nyamyumba CS
East	Nyagatare	Nyagatare Prison		South	Munini	Nyantanga CS
East	Nyagatare	Nyakigando (Nyagatare) CS		South	Nyanza	Gatagara (Nyanza) CS
East	Nyamata	Prison Rilima Prison DISP		West	Bushenge	Mwezi CS
East	Rwamagar	Gahengeri CS		West	Gihundwe	Mont Cyangugu CS
East	Rwinkwavu	Karama (kayonza) CS		West	Gihundwe	Rusizi CS
Kigali City	Kibagabag	Avega Kigali CS		West	Gisenyi	Busigari CS
Kigali City	Kibagabag	Kinyinya CS		West	Gisenyi	Murara CS
Kigali City	Kibagabag	Prison Kimironko(Remera Pris)		West	Kibuye	Mukungu CS
Kigali City	Masaka	Nyarugunga CS		West	Kibuye	Rugabano CS
Kigali City	Muhima	Gitega (Nyarugenge) CS		West	Kirinda	Biguhu CS
Kigali City	Muhima	Kabusunzu CS		West	Mibilizi	Nyakabuye CS
Kigali City	Muhima	Mwendo (nyarugenge) CS		West	Mugonero	Mpembe CS
North	Byumba	Bwisige CS		West	Mugonero	Mubuga CS
North	Byumba	Cyumba CS		West	Muhororo	Kageyo (ngororero) Fosa
North	Byumba	Musenye (gicumbi) CS		West	Murunda	Bitenga CS
North	Kinshira	Mushongi CS		West	Murunda	Murunda CS
North	Kinshira	Tare CS		West	Shyira	Gakamba CS
North	Nemba	Busengo CS		West	Shyira	Mwiyanike CS
North	Ruhengeri	Shingiro CS				

# EPIDEMIC SURVEILLANCE AND RESPONSE WEEKLY REPORT

Table 2. CASES NOTIFIED DURING WEEK 43, 2017

Public Health Facilities																											
Province	Hospital	Expected reports	Completeness (%)	Timeliness (%)	Non bloody Diarrhoea	Flu syndrome	Malaria	Severe Pneumonia for under five years	Acute Flaccid Paralysis	Bloody Diarrhea	Chicken Pox	Cholera	Diphtheria	Epidemic Typhus	Food poisoning	Hemorrhagic fever	Measles	Meningitis	Mumps	Neonatal tetanus	Plague	dog bites (Rabies exposure)	Rubella	Typhoid fever	Viral Conjunctivitis	Whooping Cough	Yellow fever
East	Gahini	9	88.9	55.6	43	81	1126	0	0	0	0	0	0	0	0	0	0	0	0	0	0	0	0	0	0	0	0
East	Kibungo	13	84.6	61.5	63	51	5675	1	0	0	0	0	0	0	0	0	0	0	0	0	0	3	0	0	0	0	0
East	Kirehe	19	78.9	52.6	361	1680	1292	18	0	2	5	0	0	0	0	0	0	0	0	0	0	2	0	23	0	0	0
East	Kiziguro	13	84.6	53.8	123	314	1060	0	0	0	0	0	0	0	0	0	0	0	0	0	0	0	0	0	0	0	0
East	Ngarama	8	87.5	75.0	97	315	541	0	0	0	0	0	0	0	541	0	0	0	1	0	0	0	0	0	0	0	0
East	Nyagatare	22	72.7	50.0	154	166	154	1	0	0	5	0	0	0	0	0	0	1	0	0	0	0	0	0	2	0	0
East	Nyamata	17	94.1	58.8	190	673	10297	1	0	3	2	0	0	0	0	0	0	0	0	0	0	1	0	0	0	0	0
East	Rwamagari	16	93.8	43.8	221	1475	3602	4	0	0	0	0	0	0	0	0	0	2	0	0	0	0	0	0	0	0	0
East	Rwinkwavu	8	87.5	37.5	62	86	1156	1	0	0	0	0	0	0	0	0	0	0	0	0	0	1	0	0	0	0	0
Kigali City	Kibagabaga	19	84.2	57.9	144	705	1211	4	0	0	1	0	0	0	0	0	0	0	0	0	0	0	0	0	0	0	0
Kigali City	Masaka	11	90.9	72.7	66	238	1256	0	0	0	0	0	0	0	0	0	0	1	0	2	0	0	0	0	0	0	0
Kigali City	Muhima	12	75.0	58.3	119	393	992	2	0	11	0	0	0	0	0	0	0	0	0	0	0	0	0	0	0	0	0
North	Butaro	20	100.0	65.0	179	180	112	6	0	6	2	0	0	0	0	0	0	0	0	9	0	0	0	0	0	0	0
North	Byumba	26	88.5	57.7	164	523	159	14	0	0	13	0	0	0	0	0	0	0	0	22	0	0	0	0	3	0	0
North	Kinshira	10	80.0	70.0	94	38	40	4	0	0	1	0	0	0	0	0	0	0	0	0	0	0	0	0	0	0	0
North	Nemba	16	93.8	75.0	121	87	142	1	0	0	1	0	0	0	0	0	0	0	0	0	0	0	0	0	0	0	0
North	Ruhengeri	17	94.1	76.5	138	461	68	9	0	2	4	0	0	0	0	0	0	0	0	3	0	0	0	0	0	0	0
North	Ruli	9	100.0	88.9	59	133	171	0	0	9	3	0	0	0	0	0	0	0	0	0	0	0	0	0	0	0	0
North	Rutongo	13	100.0	61.5	90	267	346	0	0	0	0	0	0	0	0	0	0	0	0	0	0	0	0	0	0	0	0
South	Gakoma	6	83.3	33.3	129	334	3897	0	0	1	1	0	0	0	0	0	0	0	0	0	0	2	0	0	0	0	0
South	Gitwe	9	88.9	66.7	37	138	1500	0	0	1	0	0	0	0	0	0	0	0	0	0	0	0	0	0	0	0	0
South	Kabagayi	18	100.0	77.8	119	598	1556	5	0	2	3	0	0	0	0	0	0	0	0	0	0	0	0	0	0	0	0
South	Kabutare	18	72.2	33.3	106	313	641	3	0	3	0	0	0	0	0	0	0	0	0	0	0	0	0	0	0	0	0
South	Kaduha	10	100.0	50.0	43	204	336	1	0	0	0	0	0	0	0	0	0	0	0	0	0	0	0	0	0	0	0
South	Kibilizi	10	90.0	90.0	102	252	3099	6	0	1	0	0	0	0	0	0	0	0	0	0	0	0	0	0	0	0	0
South	Kigeme	12	100.0	66.7	91	477	631	2	0	2	0	0	0	0	0	0	0	1	0	1	0	0	1	0	0	0	0
South	Munini	17	58.8	58.8	107	601	878	2	0	0	0	0	0	0	0	0	0	1	0	0	0	0	0	0	0	0	0
South	Nyanza	18	94.4	44.4	126	337	1594	2	0	5	0	0	0	0	0	0	0	0	0	0	0	4	0	0	0	0	0
South	Remera Ru	14	100.0	64.3	52	768	2802	1	0	2	1	0	0	0	0	0	0	0	0	0	0	0	0	0	0	0	0
South	Ruhango	8	100.0	87.5	61	362	3308	2	0	3	0	0	0	0	0	0	0	0	0	0	0	0	0	0	0	0	0
West	Busenge	8	87.5	62.5	104	223	829	0	0	0	0	0	0	0	0	0	0	0	0	0	0	0	0	0	0	0	0
West	Gihundwe	9	77.8	44.4	110	386	772	2	0	0	1	1	0	0	0	0	0	0	0	0	0	0	0	0	0	0	0
West	Gisenyi	15	86.7	46.7	245	603	172	17	0	0	0	6	0	0	0	3	0	0	0	0	0	0	0	0	0	0	0
West	Kabaya	10	100.0	70.0	39	135	115	0	0	0	0	0	0	0	0	0	0	0	0	0	0	0	0	0	0	0	0
West	Kibogora	14	100.0	92.9	140	331	2068	4	0	0	0	0	0	0	0	0	0	0	0	0	0	1	0	0	0	0	0
West	Kibuye	13	84.6	53.8	105	163	627	1	0	2	0	0	0	0	0	0	0	0	0	0	0	1	0	0	0	0	0
West	Kirinda	6	83.3	33.3	33	120	569	3	0	0	0	0	0	0	0	0	0	0	0	0	0	0	0	0	0	0	0
West	Mibilizi	12	91.7	66.7	128	72	2355	2	0	0	1	0	0	0	0	0	0	0	0	0	0	0	0	0	0	0	0
West	Mugonero	7	71.4	42.9	20	124	544	7	0	0	0	0	0	0	0	0	0	0	0	1	0	0	1	0	0	0	0
West	Muhororo	16	100.0	100.0	53	124	235	0	1	0	0	0	0	0	0	0	0	2	0	0	0	0	0	0	0	0	0
West	Murunda	18	88.9	66.7	316	290	727	6	0	0	0	0	0	0	0	0	0	0	0	0	0	0	0	0	0	0	0
West	Shyira	17	88.2	64.7	128	479	86	4	0	8	0	0	0	0	0	4	0	0	0	0	0	1	0	0	0	0	0
Referral hc	CHUB	1	100.0	0.0	7	22	16	6	0	0	0	0	0	0	0	0	0	0	0	0	0	0	0	0	0	0	0
Referral hc	CHUK	1	100.0	100.0	1	1	22	0	0	0	0	0	0	0	0	0	0	0	0	0	0	0	0	0	0	0	0
Referral hc	Rwanda M	1	100.0	0.0	0	0	13	0	0	0	0	0	0	0	0	0	0	0	0	0	0	0	0	0	0	0	0
SubTotal		566	88.7	61.7	4890	15323	58792	142	1	63	44	7	0	0	7	0	8	1	38	0	0	18	0	28	0	0	0



# EPIDEMIC SURVEILLANCE AND RESPONSE WEEKLY REPORT

Private Health Facilities																											
Province	Hospital	Expected reports	Completeness (%)	Timeliness (%)	Non bloody Diarrhoea	Flu syndrome	Malaria	Severe Pneumonia for under five years	Acute Flaccid Paralysis	Bloody Diarrhea	Chicken Pox	Cholera	Diphtheria	Epidemic Typhus	Food poisoning	Hemorrhagic fever	Measles	Meningitis	Mumps	Neonatal tetanus	Plague	dog bites (Rabies exposure)	Rubella	Typhoid fever	Viral Conjunctivitis	Whooping Cough	Yellow fever
East	Gahini	3	1.0	1.0	0	4	5	0	0	0	0	0	0	0	0	0	0	0	0	0	0	0	0	0	0	0	0
East	Kibungo	1	1.0	0.0	2	0	5	0	0	0	0	0	0	0	0	0	0	0	0	0	0	0	0	0	0	0	0
East	Kirehe	1	0.0	0.0	0	0	0	0	0	0	0	0	0	0	0	0	0	0	0	0	0	0	0	0	0	0	0
East	Kiziguro	3	0.0	0.0	0	0	0	0	0	0	0	0	0	0	0	0	0	0	0	0	0	0	0	0	0	0	0
East	Nyagatare	17	3.0	0.0	1	5	2	0	0	0	0	0	0	0	0	0	0	0	0	0	0	0	0	0	0	0	0
East	Nyamata	1	0.0	0.0	0	0	0	0	0	0	0	0	0	0	0	0	0	0	0	0	0	0	0	0	0	0	0
East	Rwamagan	4	0.0	0.0	0	0	0	0	0	0	0	0	0	0	0	0	0	0	0	0	0	0	0	0	0	0	0
East	Rwinkwavu	2	0.0	0.0	0	0	0	0	0	0	0	0	0	0	0	0	0	0	0	0	0	0	0	0	0	0	0
Kigali City	Kibagabaga	30	8.0	4.0	31	178	103	0	0	0	0	0	0	0	0	0	0	0	0	0	0	0	0	0	0	0	0
Kigali City	Masaka	20	3.0	2.0	11	40	43	0	0	0	0	0	0	0	0	0	0	0	0	0	0	0	0	0	0	0	0
Kigali City	Muhima	28	7.0	3.0	14	31	36	0	0	0	0	0	0	0	0	0	0	0	0	0	0	0	0	0	0	0	0
North	Butaro	1	1.0	1.0	2	4	0	0	0	0	0	0	0	0	0	0	0	0	0	0	0	0	0	0	0	0	0
North	Byumba	3	0.0	0.0	0	0	0	0	0	0	0	0	0	0	0	0	0	0	0	0	0	0	0	0	0	0	0
North	Kinshira	1	0.0	0.0	0	0	0	0	0	0	0	0	0	0	0	0	0	0	0	0	0	0	0	0	0	0	0
North	Ruhengeri	3	1.0	0.0	2	20	2	0	0	0	0	0	0	0	0	0	0	0	0	0	0	0	0	0	0	0	0
South	Gakoma	1	1.0	1.0	0	0	1	0	0	0	0	0	0	0	0	0	0	0	0	0	0	0	0	0	0	0	0
South	Kabgayi	4	0.0	0.0	6	42	61	1	0	0	0	0	0	0	0	0	0	0	0	0	0	0	0	0	0	0	0
South	Kabutare	2	0.0	0.0	0	0	0	0	0	0	0	0	0	0	0	0	0	0	0	0	0	0	0	0	0	0	0
South	Kigeme	2	1.0	0.0	0	1	1	0	0	0	0	0	0	0	0	0	0	0	0	0	0	0	0	0	0	0	0
South	Munini	1	1.0	0.0	2	1	1	0	0	0	0	0	0	0	0	0	0	0	0	0	0	0	0	0	0	0	0
South	Nyanza	1	0.0	0.0	0	0	0	0	0	0	0	0	0	0	0	0	0	0	0	0	0	0	0	0	0	0	0
South	Remera RU	3	0.0	0.0	0	0	0	0	0	0	0	0	0	0	0	0	0	0	0	0	0	0	0	0	0	0	0
South	Ruhango	4	0.0	0.0	8	0	19	0	0	0	0	0	0	0	0	0	0	0	0	0	0	0	0	0	0	0	0
West	Busenge	0	0.0	0.0	1	6	1	0	0	0	0	0	0	0	0	0	0	0	0	0	0	0	0	0	0	0	0
West	Gihundwe	2	1.0	1.0	1	10	9	2	0	0	0	0	0	0	0	0	0	0	0	0	0	0	0	0	0	0	0
West	Gisenyi	9	3.0	1.0	15	10	10	1	0	0	0	0	0	0	0	0	0	0	2	0	0	0	0	0	0	0	0
West	Kabaya	2	0.0	0.0	0	0	0	0	0	0	0	0	0	0	0	0	0	0	0	0	0	0	0	0	0	0	0
West	Mibilizi	3	3.0	2.0	14	50	12	0	0	0	0	0	0	0	0	0	0	0	0	0	0	0	0	0	0	0	0
West	Muhororo	1	1.0	1.0	4	9	0	0	0	0	0	0	0	0	0	0	0	0	0	0	0	0	0	0	0	0	0
West	Shyira	1	0.0	0.0	0	0	0	0	0	0	0	0	0	0	0	0	0	0	0	0	0	0	0	0	0	0	0
SubTotal		154	36.0	17.0	114	411	311	4	0	0	0	0	0	0	0	0	0	0	2	0	0	0	0	0	0	0	0