



Summary

I.COMPLETENESS AND TIMELINESS

- For Public Health Facilities
Completeness: 94.7 % Timeliness: 0 %
- For Privates Health Facilities
Completeness: 31.7 %
Timeliness: 0 %
- Overall Completeness:
80.5 % Timeliness: 0 %

NB: The overall timeliness was 0% probably due to the fact that the reporting day was a public holiday

Cases reported by Public and Private HFs:

- **Malaria:** 16,920 cases
- **Flu syndrome:** 11,165 cases
- **Non-bloody Diarrhoea:** 3,929 cases
- **Severe Pneumonia in children under five years:** 137 cases
- **Chicken pox:** 50 cases
- **Shigellosis:** 41 cases
- **Mumps:** 14 cases
- **AFP:** One case of Acute Flaccid paralysis was notified from Kabilizi HC of Munini hospital
- **Cholera:** 16 suspected cases of Cholera was notified from Nkombo HC of Gihundwe hospital.

EPIDEMIC SURVEILLANCE AND RESPONSE WEEKLY REPORT

Week 34 from 21st to 27th August, 2017



ESR Division

HIGHLIGHT OF THE WEEK

1. Trend of four priority diseases with highest morbidity in 2017:

The figure1 shows the trend of cases of the highest morbidity through e-IDSr notified during the last 34 weeks, those include Malaria, Influenza like illness, Non blood diarrhea and severe pneumonia under five years.

2. Cholera: Ongoing confirmed outbreak of cholera in Nkombo sector in Rusizi district, 16 new suspected cases were notified this week (see outbreak investigation in Epidemiological report week 32)

III. Deaths: 8 deaths notified countrywide

- Six deaths due to Malaria were notified including two deaths from Nyamata hospital and one death each from Mugonero, Murunda, Ngarara and Remera Rukoma hospitals
- Two deaths due to severe pneumonia under five years were notified one death each from Nyarusiza HC of Kigeme hospital and Nyamata hospital

• **Measles:** Three suspected cases of measles were notified one case each from Kibilizi HC of Nyanza hospital, Nyarurama HC of Ruhango hospital and Biryogo HC of Muhima hospital

• **Dog bites (rabies exposure):** 10 cases of dog bites (rabies exposure) were notified including 5 cases each from Rwinkwavu hospital, two cases from Kibogora hospital, two cases from Kibungo hospital and one case from Kigeme hospital

• **Typhoid fever:** 16 suspected cases of Typhoid fever were notified including 14 cases from Mahama refugee camp II HC and two cases from Kigeme hospital.

Editorial team: Dr J. Nyamusore, Dr L. Hakizimana, Dr J. Omolo, A. Kabaja, E. Nshimiyimana, H. Balisanga, F. Nizeyimana, A. Mutoni, A. Kapiteni, L. Ruyange, M. Utamuliza



EPIDEMIC SURVEILLANCE AND RESPONSE WEEKLY REPORT

1. High Morbidity diseases for the last 34 weeks, 2017

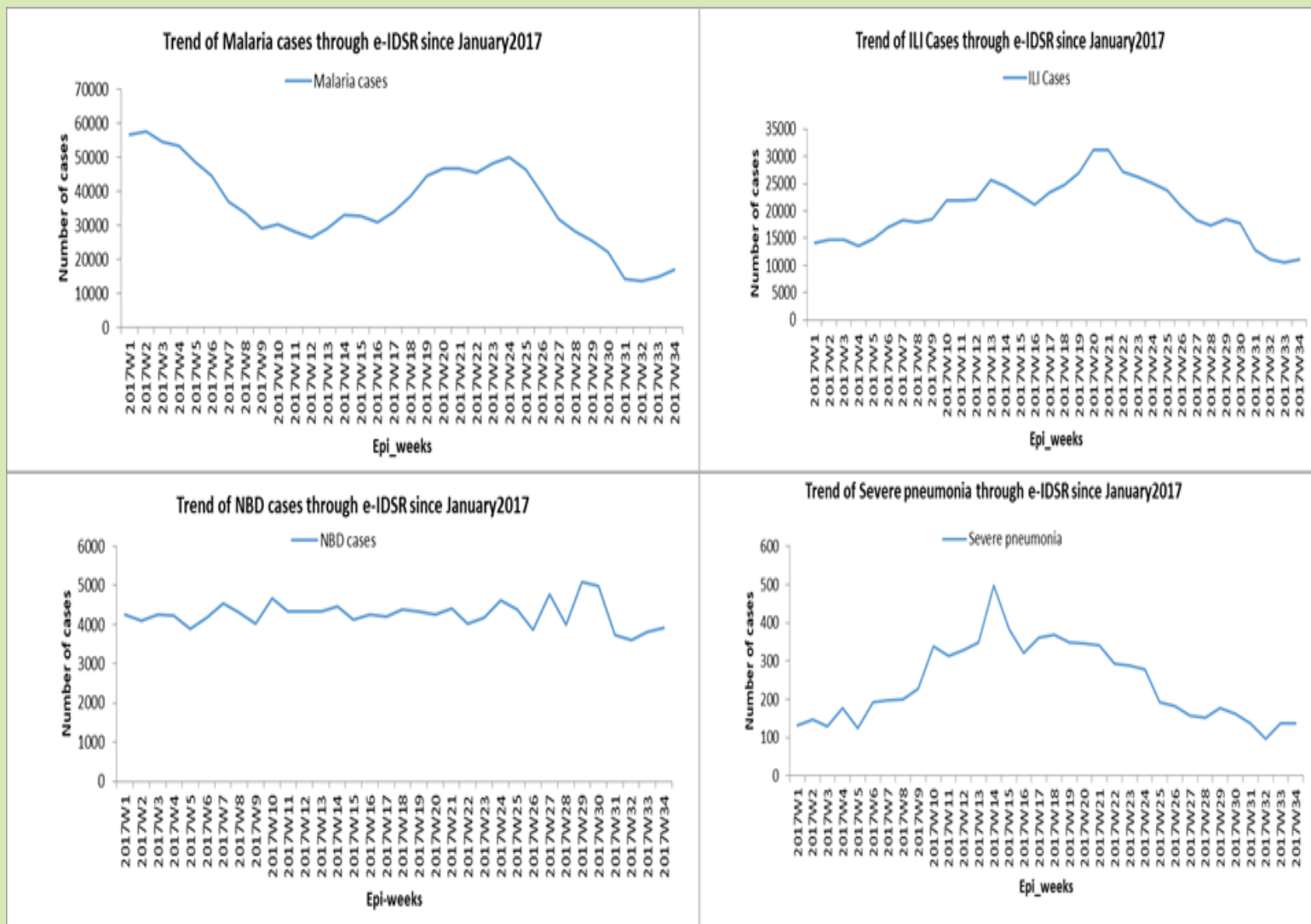


Figure 1. High morbidity diseases through e-IDSR in Rwanda

Source: Rwanda e-IDSR

2. ANNEX 1: THE FOLLOWING 24 PUBLIC HEALTH FACILITIES DIDN'T SUBMIT THEIR REPORTS IN WEEK 34/2017

Province	Hospital	Facility Name
East	Kirehe	Kabuye (kirehe) CS
East	Kirehe	Mahama Refugee Camp HC
East	Kirehe	Nasho CS
East	Kirehe	Rusumo CS
East	Nyagatare	Matimba CS
East	Rwinkwavu	Cyarubare CS
Kigali City	Kibagabaga	Avega Kigali CS
Kigali City	Kibagabaga	Kabuye CS
Kigali City	Kibagabaga	Prison Kimironko(Remera Pris)
Kigali City	Kibagabaga	Rubungo CS
Kigali City	Muhima	PCK(Gitega Pris)
North	Nemba	Karambo (gakenke) CS
North	Ruhengeri	Muhoza (Ruhengeri) CS
North	Ruhengeri	Murandi CS
North	Ruhengeri	Prison Ruhengeri DISP
South	Gitwe	Gitwe DH
South	Kabutare	Huye Police CS
South	Nyanza	Gahombo CS
South	Nyanza	Prison Mpanga Pris (nyanza)
West	Gihundwe	Prison Rusizi
West	Kabaya	Hindiro CS
West	Kabaya	Muramba CS
West	Kibogora	Rangiro CS
West	Mugonero	Gatare (twumba) CS

ANNEX 2: CASES NOTIFIED DURING WEEK 34, 2017

Public Health Facilities																										
Province	Hospital	Completeness (%)	Timeline ss (%)	Non bloody Diarrhoea	Flu syndrom e	Malaria	Severe Pneumonia for under five years	Acute Flaccid Paralysis	Bloody Diarrhea	Chicken Pox	Cholera	Diphtheria	Epidemic Typhus	Food poisoning	Hemorrhagic fever	Measles	Meningitis	Mumps	Neonatal tetanus	Plague	dog bites (Rabies exposure)	Rubella	Typhoid fever	Viral Conjunctivitis	Whooping Cough	Yellow fever
East	Gahini	100.0	0	22	135	455	1	0	0	1	0	0	0	0	0	0	0	0	0	0	0	0	0	0	0	0
East	Kibungo	100.0	0	74	52	1015	2	0	0	0	0	0	0	0	0	0	0	0	0	0	2	0	0	0	0	0
East	Kirehe	77.8	0	203	800	219	13	0	1	1	0	0	0	0	0	0	0	1	0	0	0	0	14	0	0	0
East	Kiziguro	100.0	0	130	269	197	0	0	0	0	0	0	0	0	0	0	0	0	0	0	0	0	0	0	0	0
East	Ngarama	100.0	0	81	273	124	0	0	1	0	0	0	0	0	0	0	0	0	0	0	0	0	0	0	0	0
East	Nyagatare	95.5	0	181	194	93	1	0	1	4	0	0	0	0	0	0	0	0	0	0	0	0	0	0	0	0
East	Nyamata	100.0	0	94	584	1723	13	0	2	3	0	0	0	0	0	0	0	0	0	0	0	0	0	0	0	0
East	Rwamagari	100.0	0	186	922	469	3	0	0	0	0	0	0	0	0	0	0	0	0	0	0	0	0	0	0	0
East	Rwinkwavu	87.5	0	48	54	244	2	0	1	2	0	0	0	0	0	0	0	0	0	0	5	0	0	0	0	0
Kigali City	Kibagabaga	78.9	0	97	501	341	7	0	0	0	0	0	0	0	0	0	0	0	0	0	0	0	0	0	0	0
Kigali City	Masaka	100.0	0	47	179	200	2	0	0	4	0	0	0	0	0	0	0	1	0	0	0	0	0	0	0	0
Kigali City	Muhima	91.7	0	44	267	287	4	0	0	4	0	0	0	0	0	1	0	0	0	0	0	0	0	0	0	0
North	Butaro	100.0	0	141	185	74	1	0	5	5	0	0	0	0	0	0	0	7	0	0	0	0	0	0	0	0
North	Byumba	100.0	0	165	458	97	1	0	1	3	0	0	0	0	0	0	0	0	0	0	0	0	0	0	0	0
North	Kinshira	100.0	0	86	30	44	0	0	0	0	0	0	0	0	0	0	0	0	0	0	0	0	0	0	0	0
North	Nemba	100.0	0	147	63	67	4	0	0	1	0	0	0	0	0	0	0	4	0	0	0	0	0	0	0	0
North	Ruhengeri	82.4	0	131	322	49	11	0	2	0	0	0	0	0	0	0	0	0	0	0	0	0	0	0	0	0
North	Ruli	100.0	0	51	128	67	1	0	1	1	0	0	0	0	0	0	0	0	0	0	0	0	0	0	0	0
North	Rutongo	100.0	0	103	273	139	1	0	0	0	0	0	0	0	0	0	0	0	0	0	0	0	0	0	0	0
South	Gakoma	100.0	0	79	115	616	0	0	0	2	0	0	0	0	0	0	0	0	0	0	0	0	0	0	0	0
South	Gitwe	88.9	0	22	117	579	0	0	0	0	0	0	0	0	0	0	0	0	0	0	0	0	0	0	0	0
South	Kabgayi	100.0	0	79	499	795	3	0	1	4	0	0	0	0	0	0	0	1	0	0	0	0	0	0	0	0
South	Kabutare	94.4	0	120	175	260	1	0	1	0	0	0	0	0	0	0	0	0	0	0	0	0	0	0	0	0
South	Kaduha	100.0	0	54	217	164	3	0	0	0	0	0	0	0	0	0	0	0	0	0	0	0	0	0	0	0
South	Kibilizi	100.0	0	79	213	969	3	0	2	0	0	0	0	0	0	0	0	0	0	0	0	0	0	0	0	0
South	Kigeme	100.0	0	42	336	218	8	0	1	1	0	0	0	0	0	0	0	0	0	0	1	0	2	0	0	0
South	Munini	100.0	0	97	357	399	1	1	0	0	0	0	0	0	0	0	0	0	0	0	0	0	0	0	0	0
South	Nyanza	88.9	0	113	194	455	4	0	1	1	0	0	0	0	0	1	0	0	0	0	0	0	0	0	0	0
South	Remera R	100.0	0	41	460	881	2	0	0	0	0	0	0	0	0	0	0	0	0	0	0	0	0	0	0	0
South	Ruhango	100.0	0	22	144	595	3	0	0	0	0	0	0	0	0	1	0	0	0	0	0	0	0	0	0	0
West	Bushenge	100.0	0	48	149	340	0	0	0	0	0	0	0	0	0	0	0	0	0	0	0	0	0	0	0	0
West	Gihundwe	88.9	0	77	187	273	3	0	0	6	16	0	0	0	0	0	0	0	0	0	0	0	0	0	0	0
West	Gisenyi	100.0	0	144	409	108	0	0	0	0	0	0	0	0	0	0	0	0	0	0	0	0	0	0	0	0
West	Kabaya	85.7	0	2	55	40	0	0	0	0	0	0	0	0	0	0	0	0	0	0	0	0	0	0	0	0
West	Kibogora	92.9	0	124	212	1248	8	0	0	0	0	0	0	0	0	0	0	0	0	0	2	0	0	0	0	0
West	Kibuye	100.0	0	96	166	417	3	0	16	3	0	0	0	0	0	0	0	0	0	0	0	0	0	0	0	0
West	Kirinda	100.0	0	24	71	185	1	0	0	0	0	0	0	0	0	0	0	0	0	0	0	0	0	0	0	0
West	Mibilizi	100.0	0	84	23	796	4	0	0	0	0	0	0	0	0	0	0	0	0	0	0	0	0	0	0	0
West	Mugonero	85.7	0	25	96	423	9	0	0	0	0	0	0	0	0	0	0	0	0	0	0	0	0	0	0	0
West	Muhororo	100.0	0	27	148	113	0	0	0	1	0	0	0	0	0	0	0	0	0	0	0	0	0	0	0	0
West	Murunda	100.0	0	170	232	675	4	0	0	0	0	0	0	0	0	0	0	0	0	0	0	0	0	0	0	0
West	Shyira	100.0	0	122	365	27	3	0	3	0	0	0	0	0	0	0	0	0	0	0	0	0	0	0	0	0
Referral hd	CHUB	100.0	0	6	12	1	3	0	0	0	0	0	0	0	0	0	0	0	0	0	0	0	0	0	0	0
Referral hd	CHUK	100.0	0	2	3	1	0	0	0	0	0	0	0	0	0	0	0	0	0	0	0	0	0	0	0	0
Referral hd	Rwanda M	100.0	0	0	0	4	0	0	0	0	0	0	0	0	0	0	0	0	0	0	0	0	0	0	0	0
Sub Total		96.0		3730	10644	16486	133	1	40	47	16	0	0	0	0	3	0	14	0	0	10	0	16	0	0	0

EPIDEMIC SURVEILLANCE AND RESPONSE WEEKLY REPORT

Private Health Facilities: Completeness: 31.7% Timeliness: 0%

Province	Hospital	Non bloody Diarrhoea	Flu syndrome	Malaria	Severe Pneumonia for under five years	Acute Flaccid Paralysis	Bloody Diarrhea	Chicken Pox	Cholera	Diphtheria	Epidemic Typhus	Food poisoning	Hemorrhagic fever	Measles	Meningitis	Mumps	Neonatal tetanus	Plague	dog bites (Rabies exposure)	Rubella	Typhoid fever	Viral Conjunctivitis	Whooping Cough	Yellow fever
East	Gahini	7	8	5	0	0	0	0	0	0	0	0	0	0	0	0	0	0	0	0	0	0	0	0
East	Kibungo	27	5	239	0	0	0	0	0	0	0	0	0	0	0	0	0	0	0	0	0	0	0	0
East	Kirehe	0	0	0	0	0	0	0	0	0	0	0	0	0	0	0	0	0	0	0	0	0	0	0
East	Kiziguro	0	0	0	0	0	0	0	0	0	0	0	0	0	0	0	0	0	0	0	0	0	0	0
East	Ngarama	0	0	0	0	0	0	0	0	0	0	0	0	0	0	0	0	0	0	0	0	0	0	0
East	Nyagatare	5	6	1	0	0	0	0	0	0	0	0	0	0	0	0	0	0	0	0	0	0	0	0
East	Nyamata	8	30	0	0	0	0	0	0	0	0	0	0	0	0	0	0	0	0	0	0	0	0	0
East	Rwamagari	0	0	0	0	0	0	0	0	0	0	0	0	0	0	0	0	0	0	0	0	0	0	0
East	Rwinkwavu	0	0	0	0	0	0	0	0	0	0	0	0	0	0	0	0	0	0	0	0	0	0	0
Kigali City	Kibagabaga	87	237	52	0	0	1	2	0	0	0	0	0	0	0	0	0	0	0	0	0	0	0	0
Kigali City	Masaka	2	27	17	0	0	0	0	0	0	0	0	0	0	0	0	0	0	0	0	0	0	0	0
Kigali City	Muhima	19	99	18	0	0	0	1	0	0	0	0	0	0	0	0	0	0	0	0	0	0	0	0
North	Butaro	0	0	0	0	0	0	0	0	0	0	0	0	0	0	0	0	0	0	0	0	0	0	0
North	Byumba	0	0	0	0	0	0	0	0	0	0	0	0	0	0	0	0	0	0	0	0	0	0	0
North	Kinshira	0	0	0	0	0	0	0	0	0	0	0	0	0	0	0	0	0	0	0	0	0	0	0
North	Nemba	0	0	0	0	0	0	0	0	0	0	0	0	0	0	0	0	0	0	0	0	0	0	0
North	Ruhengeri	2	20	2	0	0	0	0	0	0	0	0	0	0	0	0	0	0	0	0	0	0	0	0
North	Rutongo	0	0	0	0	0	0	0	0	0	0	0	0	0	0	0	0	0	0	0	0	0	0	0
South	Gakoma	0	0	0	0	0	0	0	0	0	0	0	0	0	0	0	0	0	0	0	0	0	0	0
South	Gitwe	0	0	0	0	0	0	0	0	0	0	0	0	0	0	0	0	0	0	0	0	0	0	0
South	Kabagari	13	70	71	0	0	0	0	0	0	0	0	0	0	0	0	0	0	0	0	0	0	0	0
South	Kabutare	0	0	0	0	0	0	0	0	0	0	0	0	0	0	0	0	0	0	0	0	0	0	0
South	Kaduha	0	0	0	0	0	0	0	0	0	0	0	0	0	0	0	0	0	0	0	0	0	0	0
South	Kigeme	2	0	1	0	0	0	0	0	0	0	0	0	0	0	0	0	0	0	0	0	0	0	0
South	Munini	5	1	1	0	0	0	0	0	0	0	0	0	0	0	0	0	0	0	0	0	0	0	0
South	Nyanza	0	0	0	0	0	0	0	0	0	0	0	0	0	0	0	0	0	0	0	0	0	0	0
South	Remera Ru	0	0	0	0	0	0	0	0	0	0	0	0	0	0	0	0	0	0	0	0	0	0	0
South	Ruhango	0	0	0	0	0	0	0	0	0	0	0	0	0	0	0	0	0	0	0	0	0	0	0
West	Bushenge	0	0	0	0	0	0	0	0	0	0	0	0	0	0	0	0	0	0	0	0	0	0	0
West	Gihundwe	3	10	10	2	0	0	0	0	0	0	0	0	0	0	0	0	0	0	0	0	0	0	0
West	Gisenyi	19	8	17	2	0	0	0	0	0	0	0	0	0	0	0	0	0	0	0	0	0	0	0
West	Kabaya	0	0	0	0	0	0	0	0	0	0	0	0	0	0	0	0	0	0	0	0	0	0	0
West	Kibuye	0	0	0	0	0	0	0	0	0	0	0	0	0	0	0	0	0	0	0	0	0	0	0
West	Mibilizi	0	0	0	0	0	0	0	0	0	0	0	0	0	0	0	0	0	0	0	0	0	0	0
West	Muhororo	0	0	0	0	0	0	0	0	0	0	0	0	0	0	0	0	0	0	0	0	0	0	0
West	Shyamba	0	0	0	0	0	0	0	0	0	0	0	0	0	0	0	0	0	0	0	0	0	0	0
Sub Total		199	521	434	4	0	1	3	0	0	0	0	0	0	0	0	0	0	0	0	0	0	0	0

EPIDEMIC SURVEILLANCE AND RESPONSE WEEKLY REPORT

P.6