

WEEKLY EPIDEMIOLOGICAL BULLETIN

Week 52: 26 Dec 2022 to 1st Jan 2023

Released on: 5th January 2023



PUBLIC HEALTH SURVEILLANCE & EMERGENCY PREPAREDNESS AND RESPONSE DIVISION

Editorial message

Effective and efficient Integrated Disease Surveillance and Response (IDSR) systems contribute to the reduction of morbidity, disability and mortality from disease outbreaks and health emergencies.

This weekly bulletin presents the epidemiological status of the diseases under surveillance in Rwanda. These data are useful to trigger a rapid response for rapid impact, actions and results oriented, a proactive preparedness, risk mitigation and prevention, intelligence, real-time information, and communication for decision making.

Editorial board

Surveillance Unit, Outbreak Preparedness and Response Unit, Food and Waterborne Diseases Unit, Avian Influenza and Highly Pathogenic Diseases Unit, One health Unit

Overview

This Weekly Bulletin focuses on diseases under surveillance in Rwanda. This week's articles cover:

- ☞ Reports completeness
- ☞ Reports timeliness
- ☞ Trend of weekly reportable diseases
- ☞ Distribution of Immediate reportable diseases
- ☞ COVID-19 situation
- ☞ Ebola situation
- ☞ Reported deaths
- ☞ Health facilities with no reports

TREND OF IDSR REPORTS COMPLETENESS

(Previous 10 weeks: Wk43 – Wk52)

OVERALL

RWANDA

Completeness – Wk 52: 87%



Completeness is calculated as the proportion of received reports over expected reports by week in a catchment area

Observation: During this week 52, the overall IDSR reports completeness was 87%. Many DH had a low rate of completeness (between 60 and 79%) : Nyagatare, Bushenge, Nyarugenge, Rwinkwavu, Kaduha, Muhima, other had the completeness below 60%:Gatunda,Ruli,Nyanza,Gahini,Kigeme,Butaro,Byumba,Gitwe,Kibagabaga,Rwamagana,Nyamata,Kabutare DHs. while some hospitals did not yet report on Wednesday: CARAES Ndera, CHUB, CHUK, Rwanda military hospital. These hospitals have to report all required reports even during the holidays.

TREND OF IDSR REPORTS TIMELINESS

(Previous 10 weeks: Wk43 – Wk52)

OVERALL

RWANDA

Timeliness – Wk 52: 80%



Timeliness is calculated as the proportion of received reports on time over the expected reports by week in a catchment area

Observation: During this week 52, the overall IDSR reports timeliness was 80%. Many DH had a low rate of timeliness (between 60 and 79%): Nyagatare, Gatunda, Remera-Rukoma, Rutongo, Nemba, Gahini, Ruhengeri, Butaro, Byumba, Rwakagana, Kabutare. Other had a low timeliness, below 60%: Nyanza, Gitwe, Kibagabaga, Kigeme, Nyamata DHs, while some hospitals did not yet report on Wednesday: CARAES Ndera, CHUB, CHUK, Rwanda military hospital. These hospitals have to report all required reports on time (on Monday before 12:00) even during the holidays.

IDSR WEEKLY REPORTABLE DISEASES - 2022

Non-Bloody Diarrhea cases

Wk01 – Wk52: 242,531

↓ Wk52: 2864

Flu syndrome cases

Wk01 – Wk52: 810,852

↓ Wk52: 12,783

Malaria cases

Wk01 – Wk52: 204,077

↓ Wk52: 2,160

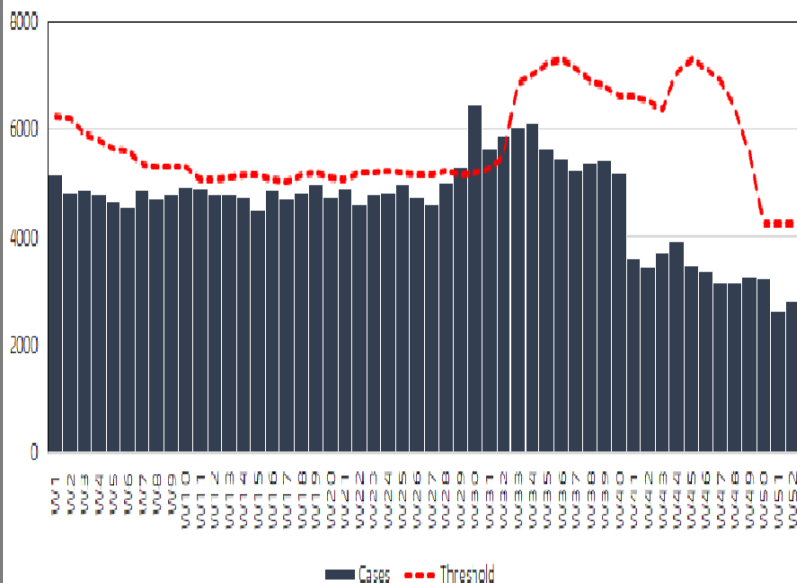
Severe Pneumonia cases

Wk01 – Wk52: 15,910

↓ Wk52: 328

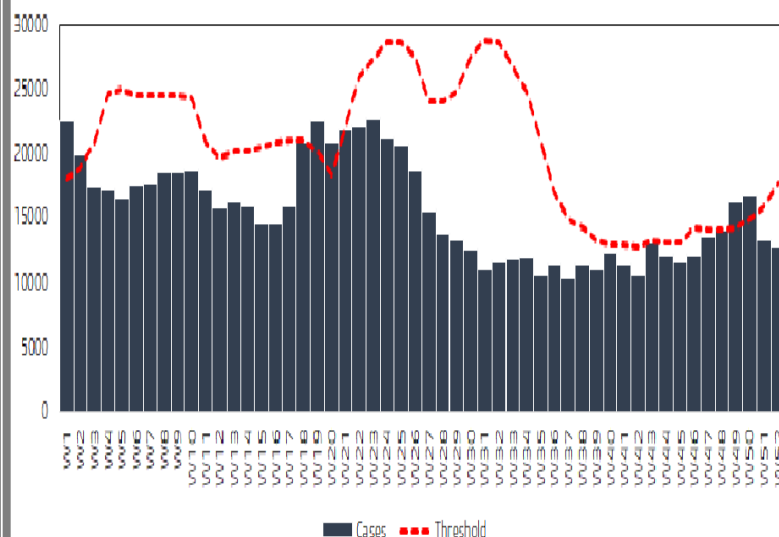
Trend of Non Bloody Diarrhea cases in Rwanda 2022

(Wk1 - Wk52)



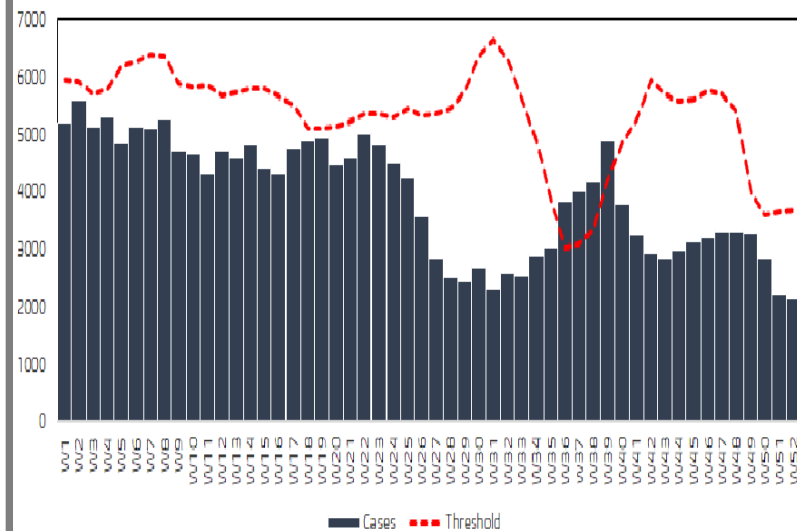
Trend of Flu syndrome cases in Rwanda 2022

(Wk1 - Wk52)



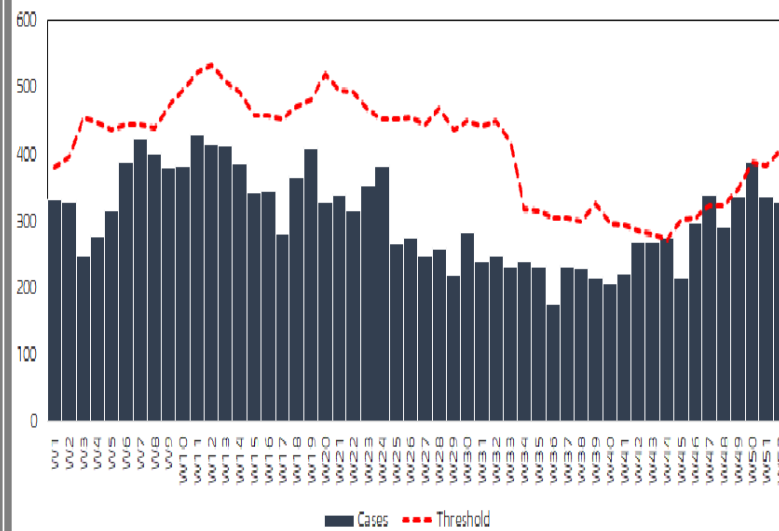
Trend of Malaria cases in Rwanda 2022

(Wk1 - Wk52)



Trend of Severe pneumonia cases in Rwanda 2022

(Wk1 - Wk52)



IDSR WEEKLY REPORTABLE DISEASES -Week 52

2022

Covid19 confirmed cases:

Wk 42-52:558

Wk 52: 54 cases

Rabies exposure (Dog or other mammals bite) cases:

Wk 42-52: 300

Wk 52: 23 cases

Brucellosis cases

Wk 42-52:1 case



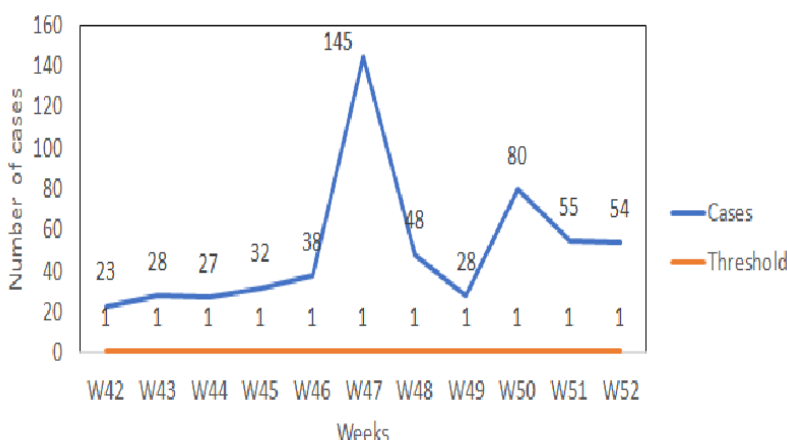
Wk 52:0 case

Other weekly reportable diseases:

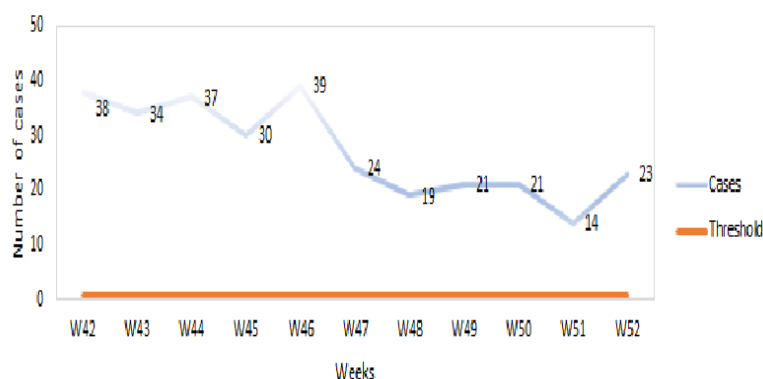
Trypanosomiasis

no case

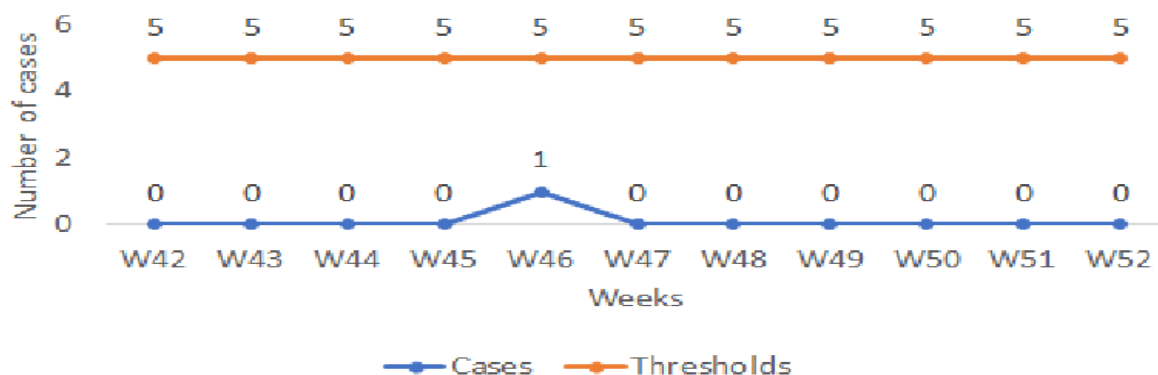
Covid19 confirmed cases in Rwanda 2022
(Wk 42-52)



Rabies exposure cases in Rwanda 2022
(Wk 42-52)



Trend of Brucellosis cases in Rwanda 2022
(Wk 42 - Wk 52)



From week 42, IDSR weekly report form revised and adapted on technical guideline 3rd edition was adapted also in DHIS-2, therefore many changes occurred.

In week 52, for 8 weekly reportable diseases, data analysis showed that Covid19 cases and Rabies exposure crossed the thresholds, while other diseases did not cross the thresholds. Further investigations are needed.

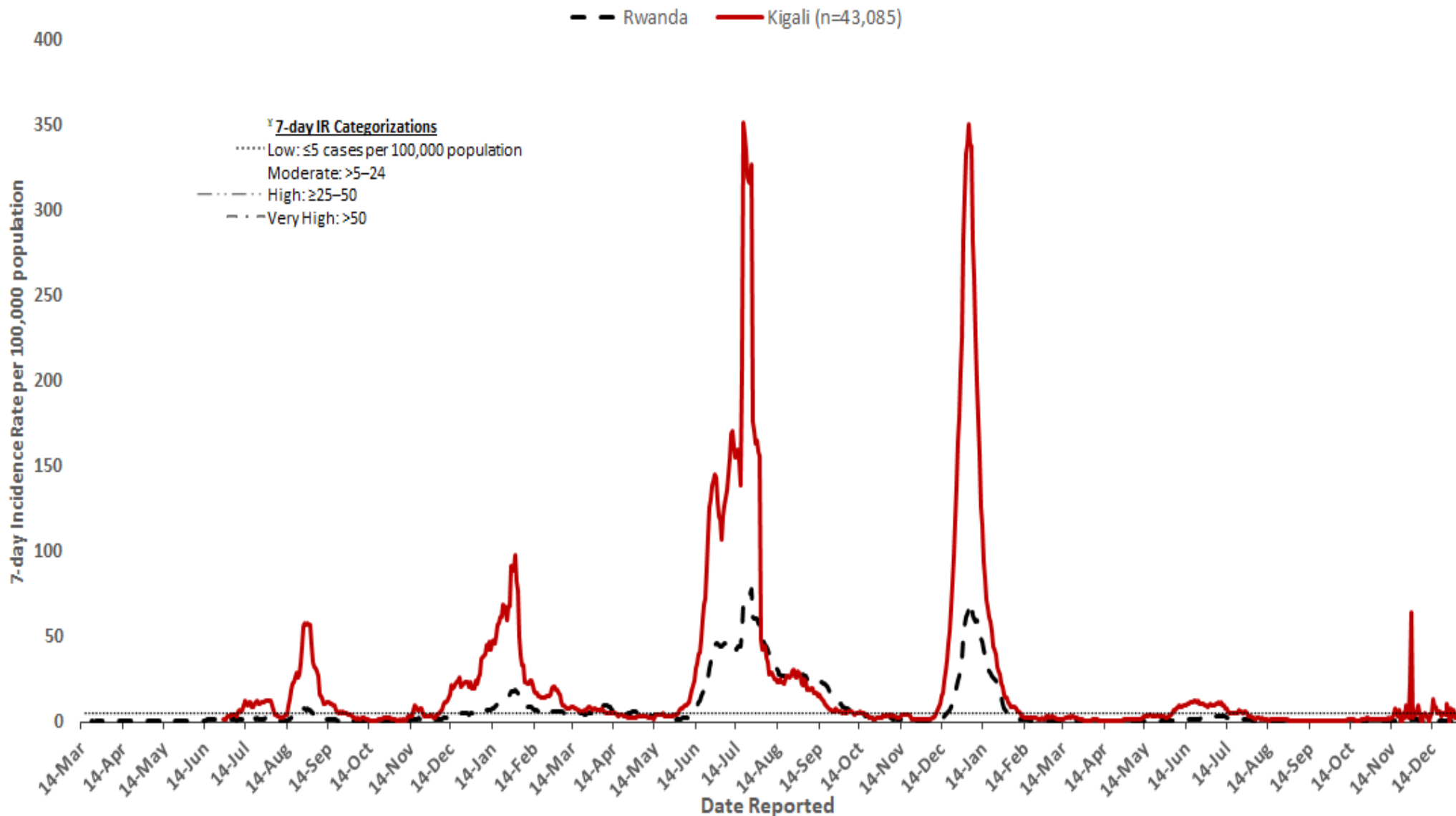
IDSR IMMEDIATE REPORTABLE DISEASES – Wk52

Hospitals	HF's	Bacterial Meningitis	Bloody Diarrhea (Shigellosis)	Measles	Typhoid Fever	Severe malaria
Nyarugenge	Biryogo CS	0	3	0	0	0
Mibilizi	Bugarama (rusizi) CS	0	0	0	0	1
Bushenge	Bushenge CS	0	0	1	0	0
Byumba	Byumba CS	0	0	1	0	0
Byumba	Byumba DH	0	0	0	0	1
Murunda	Crete Congo Nil CS	0	0	1	0	0
Butaro	Cyanika (burera) CS	0	0	0	0	2
Gitwe	Gitwe CS	0	2	0	0	0
Kirehe	Kigarama CS	0	0	0	10	0
Ruhengeri	Kimonyi CS	0	0	1	0	0
Butaro	Kinoni CS	0	1	0	0	0
Mibilizi	Mibilizi DH	0	0	0	0	1
Murunda	Murunda DH	0	0	0	0	1
Murunda	Mushubati CS	0	0	0	0	1
Gisenyi	Ndengera CLIN	0	1	0	0	0
Nyanza	Nyanza DH	1	0	0	0	0
Ruhango	Nyarurama CS	0	1	0	0	0
Ruhango	Ruhango CS	0	0	1	0	0
Nyamata	Ruhuha CS	0	0	3	0	0
	Total	1	8	8	10	7

Observation: During week 52, the reported IDSR immediate reportable diseases were Bacterial meningitis, Bloody diarrhea, Measles, Typhoid fever and Severe Malaria.

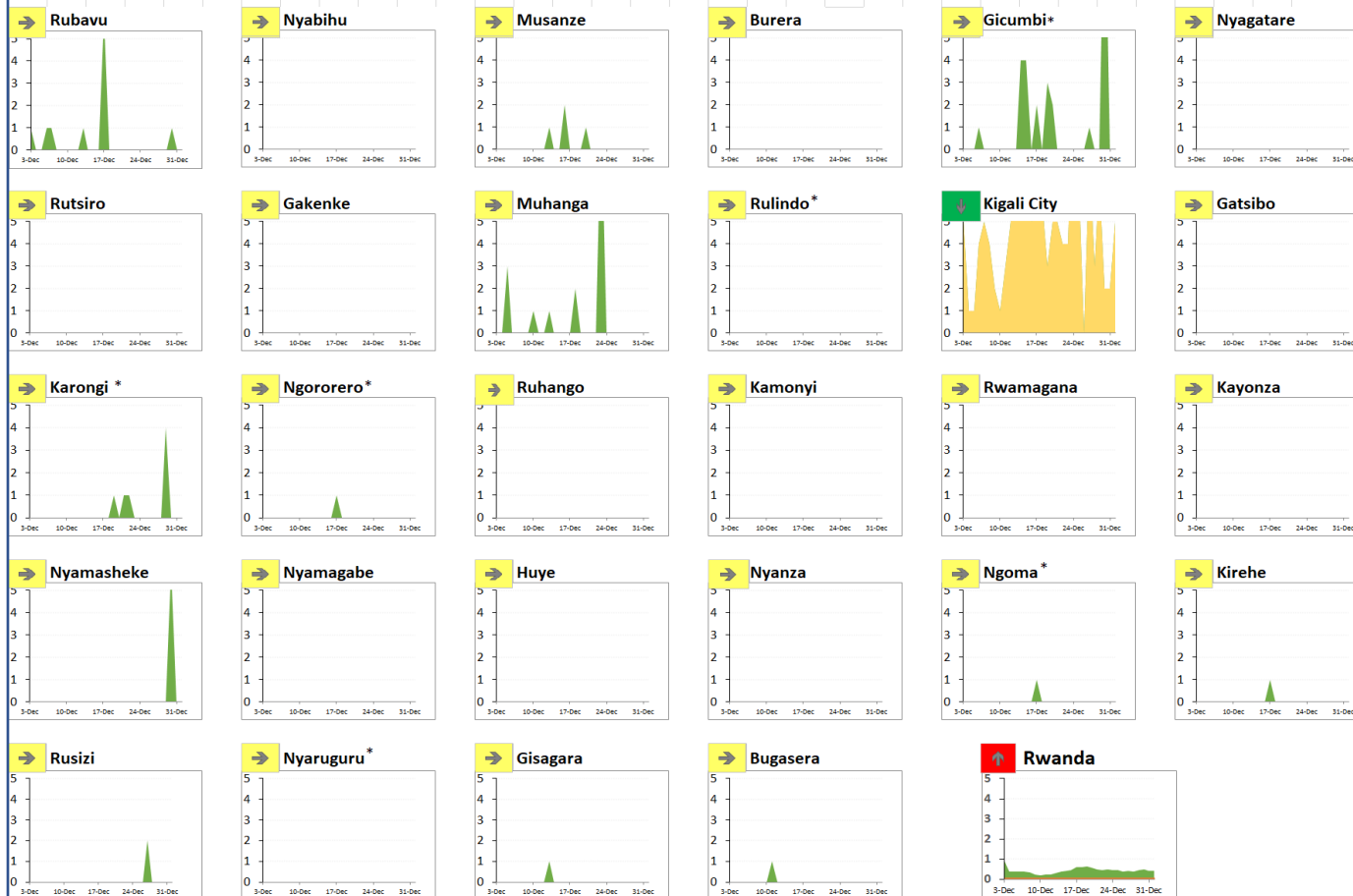
TREND OF 7-DAY INCIDENCE RATE OF COVID-19

COVID-19 Incidence Rate (IR) in Kigali City and Rwanda, March 14, 2020–January 01, 2023



TREND OF INCIDENCE RATE OF COVID-19 BY DISTRICTS

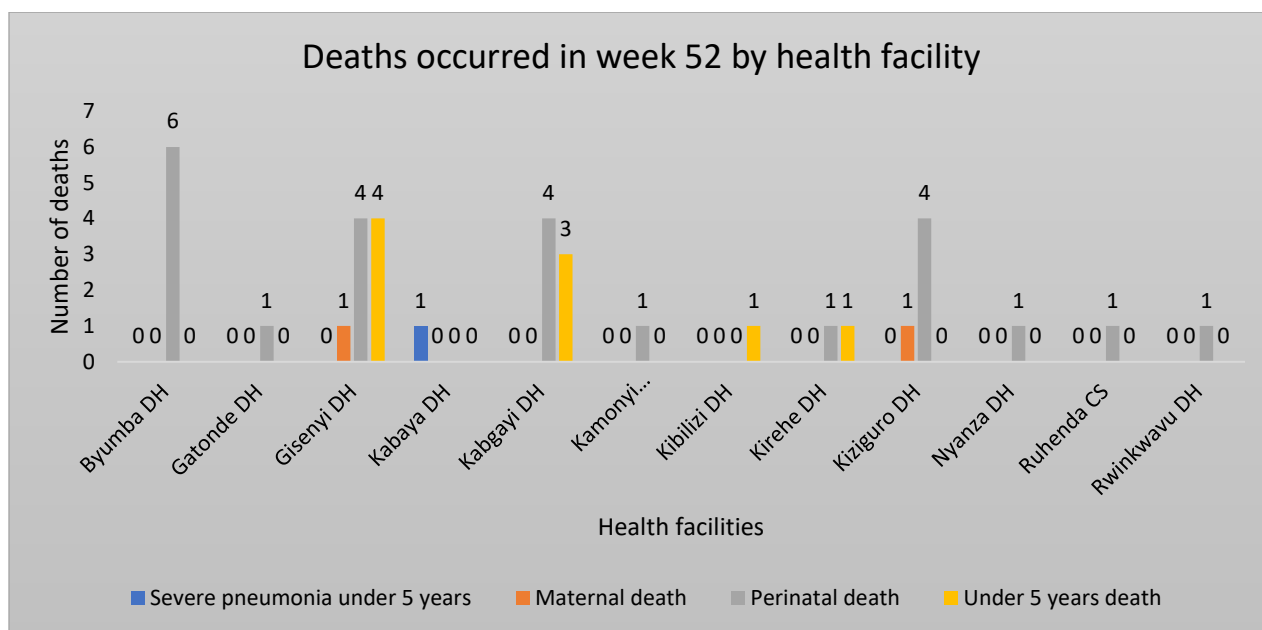
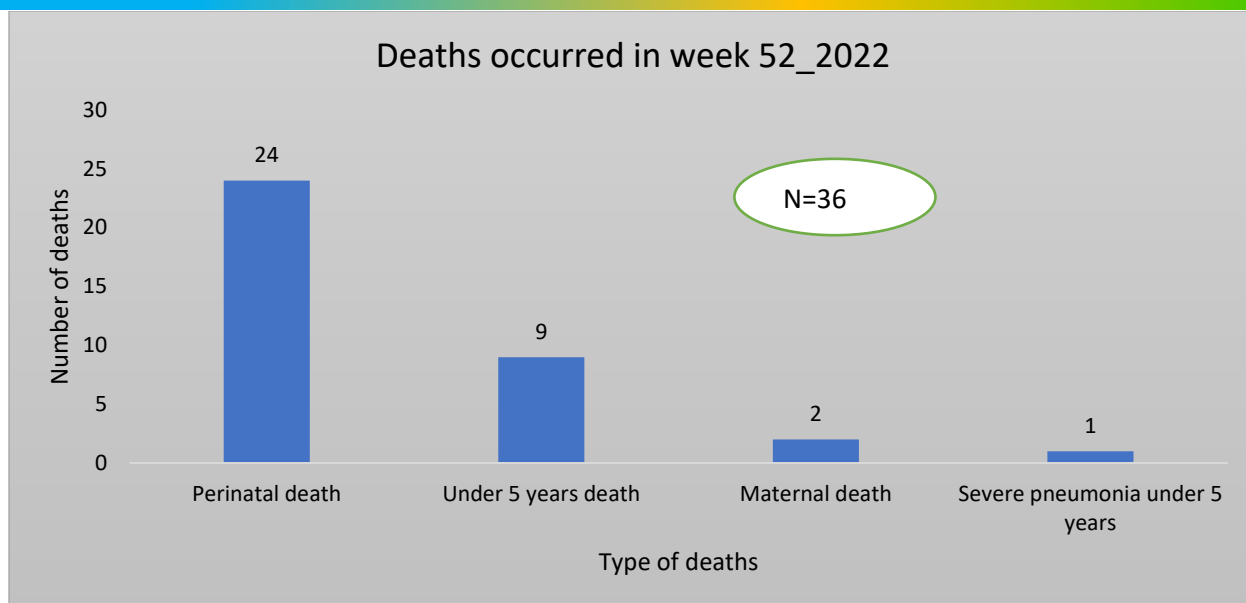
COVID-19 Cumulative 7-day (December 26–January 01) Incidence Rate (IR) and Trend (week-to-week % change) in Rwanda, December 03–January 01 (30 days), 2021



	Distribution of Districts	
Incidence rate in the last 7 days per 100,000	No.	%
Low: ≤5 cases	30	100%
Moderate: 5–24 cases	0	0%
High: ≥25–50 cases	0	0%
Very High: >50 cases	0	0%
Percentage change in cases in last 7 days vs previous 7 days		
Decrease: ≤ -10% change	↓	5 17%
Stable: > -10% change and <10% change	→	25 83%
Increase: ≥10% change	↑	0 0%

Observation: During the week 52, The overall incidence rate of Rwanda was 0.4 case per 100,000 population (it was not change compared with previous week: 0.4 cases per 100,000 population in week 51). Kigali City, Gicumbi and Nyamasheke districts presented a very highest incidence rate, while Rubavu, Karongi, districts presented also the cases, other districts did not have cases in week 52.

SUMMARY OF REPORTED DEATHS THROUGH e-IDSr (Wk 52)



In week 52, perinatal deaths had a highest number (24), especially in Byumba DH (7 perinatal deaths), 9 deaths of under 5 years, 2 maternal death and 1 death due to severe pneumonia < 5 years. The death audit should be conducted in health facilities for determining the cause of those deaths and elaborate recommendations for reducing those which should be preventable.

HEALTH FACILITIES WITH NO REPORTS RECEIVED IN e-IDSr FOR Wk 52

Hospitals	HF's
Butaro	Butaro DH
	Gatebe CS
	Gitare CS
	Ruhunde CS
Gatunda	Mimuri CS
	Nyarurema CS
Gitwe	Byimana CS
	Munanira CS
	Muremure CS
	Mwendo (Gitwe) CS
Kabutare	Busoro-gishamvu CS
	Butare Chu Hnr (huye)
	Kabutare DH
	Kinyamakara CS
	Matyazo CS
Kaduha	Simbi CS
	Nyarwungo CS
Kibagabaga	Bumbogo (ex-Gikomero I) CS
	Kabuye CS
	Kacyiru CS
	Kacyiru DH
	Kibagabaga DH
	King Faisal Hospital HNR
	Kinyinya CS
	Nyacyonga CS
Kibilizi	Kansi CS
Kibungo	Gasetza CS
	Ngoma Prison
Kigeme	Kigeme CS
	Kigeme Refugee Camp HC
	Kitabi CS
	Mbuga CS
	Nyamagabe CS
	Nyamagabe Prison
	Nyarusiza CS
	Shaba (nyamagabe) CS
	Uwinkingi CS
Kirehe	Kabuye (kirehe) CS
Masaka	Rwanda Military Hospital
Nemba	Cyabingo CS
Nyagatare	Bugaragara CS
	Ntoma CS
	Tabagwe CS
Nyamata	Gakurazo CS
	Gihinga CS
	Mwogo CS
	Ngeruka CS
	Ntarama CS
	Nyamata CS
	Nyamata DH
	Nyarugenge CS
	Busoro CS
Nyanza	Cyaratsi CS
	Hanika I (NYANZA) CS
	Mucubira CS
	Mututu CS
	Ntyazo CS
	Nyanza Prison
	Nyarusange (nyanza) CS
	CHK(CHUK) HNR
Remera Rukoma	Karama (Kamonyi) CS
	Karangara CS
	Kayumbu CS
Ruhango	Ruhango PH
Ruhengeri	Karwasa CS
	Nyakinama CS
	Ruhengeri RH
Ruli	Ruli DH
	Rushashi CS
	Cyinzuzi CS
Rutongo	Masoro CS
	Murambi CS
	Rulindo CS
	Rubona (rwamagana) CS
Rwamagana	Rwamagana Prison
Rwinkwavu	Cyarubare CS
Shyira	Nyakiliba CS

TRUE EVENTS REPORTED IN COMMUNITY BASED SURVEILLANCE(e-CBS) IN e-IDSR FOR Wk 52

Village	Event trigger	Sex	Age in years
Ryabega	DB	NA	NA
Cyamabuye	HD	Male	91
Bukira	HD	Male	39
Musagara	HD	Female	7

The events reported and verified in week 52 were 1 dog bite ,3 human deaths, respectively with 91;39 and 7 years old, the verbal autopsy for the deaths will be conducted.