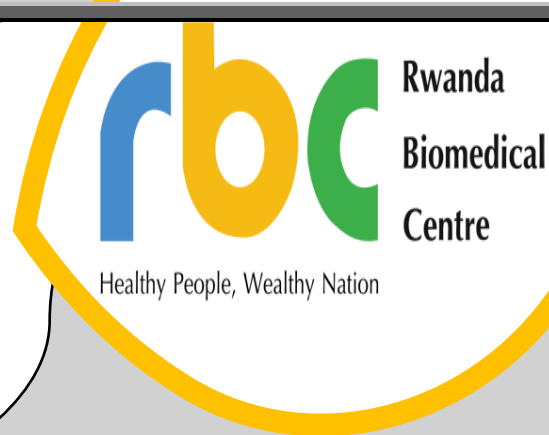


WEEKLY EPIDEMIOLOGICAL BULLETIN

Week 12: From 20th to 26th March 2023

Released on: 30th March 2023



PUBLIC HEALTH SURVEILLANCE & EMERGENCY PREPAREDNESS AND RESPONSE DIVISION

Editorial message

Effective and efficient Integrated Disease Surveillance and Response (IDSR) systems contribute to the reduction of morbidity, disability and mortality from disease outbreaks and health emergencies.

This weekly bulletin presents the epidemiological status of the diseases under surveillance in Rwanda. These data are useful to trigger a rapid response for rapid impact, actions and results oriented, a proactive preparedness, risk mitigation and prevention, intelligence, real-time information, and communication for decision making.

Overview

This Weekly Bulletin focuses on diseases under surveillance in Rwanda. This week's articles cover:

- ☞ Reports completeness
- ☞ Reports timeliness
- ☞ Trend of weekly reportable diseases
- ☞ Distribution of immediate reportable diseases
- ☞ Key highlights of the week
- ☞ COVID-19 situation

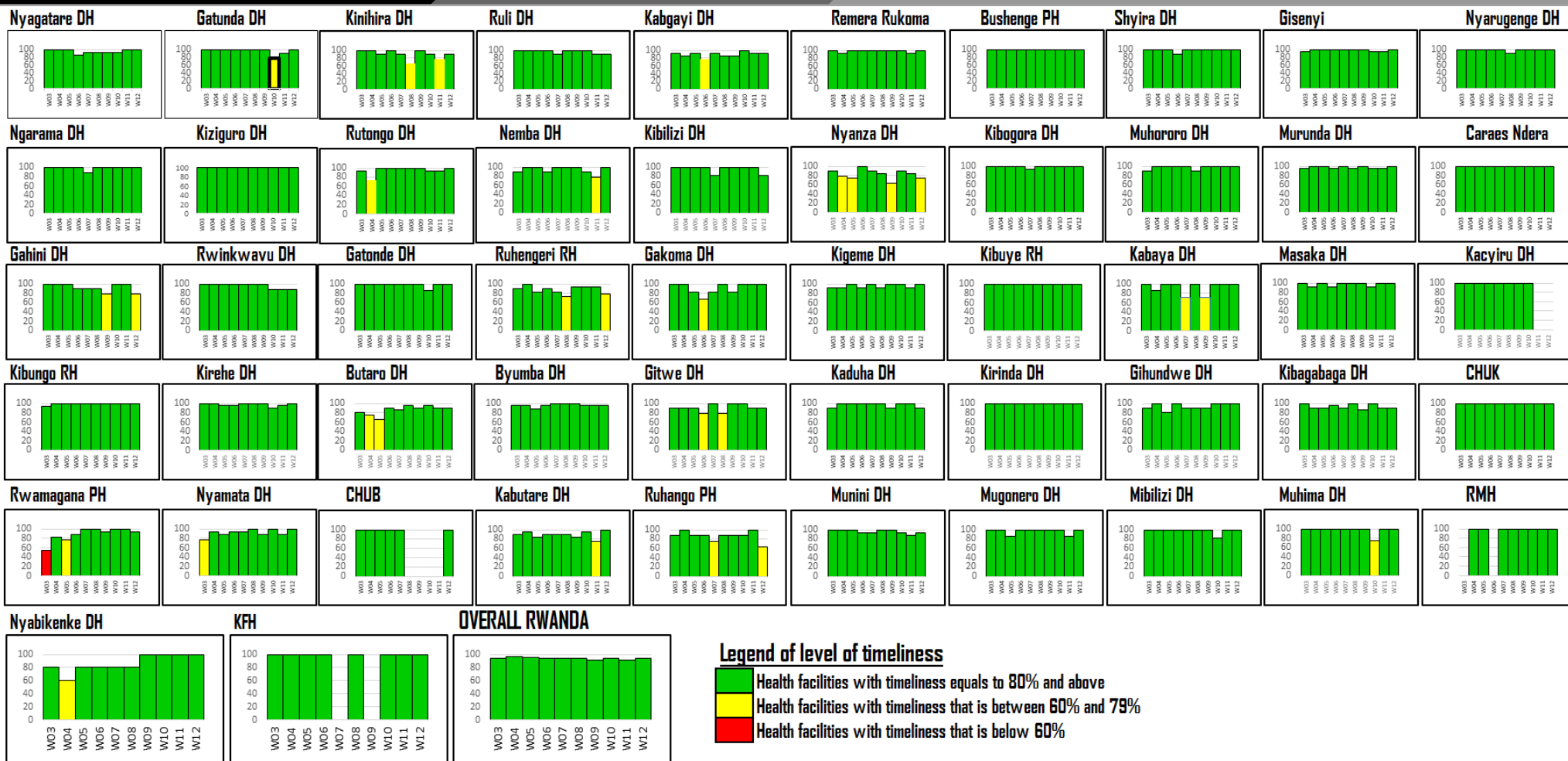
TREND OF IDSR REPORTS COMPLETENESS

(Previous 10 weeks: Wk 03-Wk 12/2023)

OVERALL

RWANDA

Completeness – Wk 12/2023: 97%



Completeness is calculated as the proportion of received reports over expected reports by week in a catchment area

Observation: During the week 12/2023, the overall IDSR reports completeness was 97%. However, Nyanza and Gahini DHs as well as Ruhengeri RH and Ruhango PH had a low reporting completeness (between 60% and 79%). Other hospitals had a good reporting rate of completeness (equals and above 80%). The hospitals with a low reporting completeness are recommended to submit all required reports.

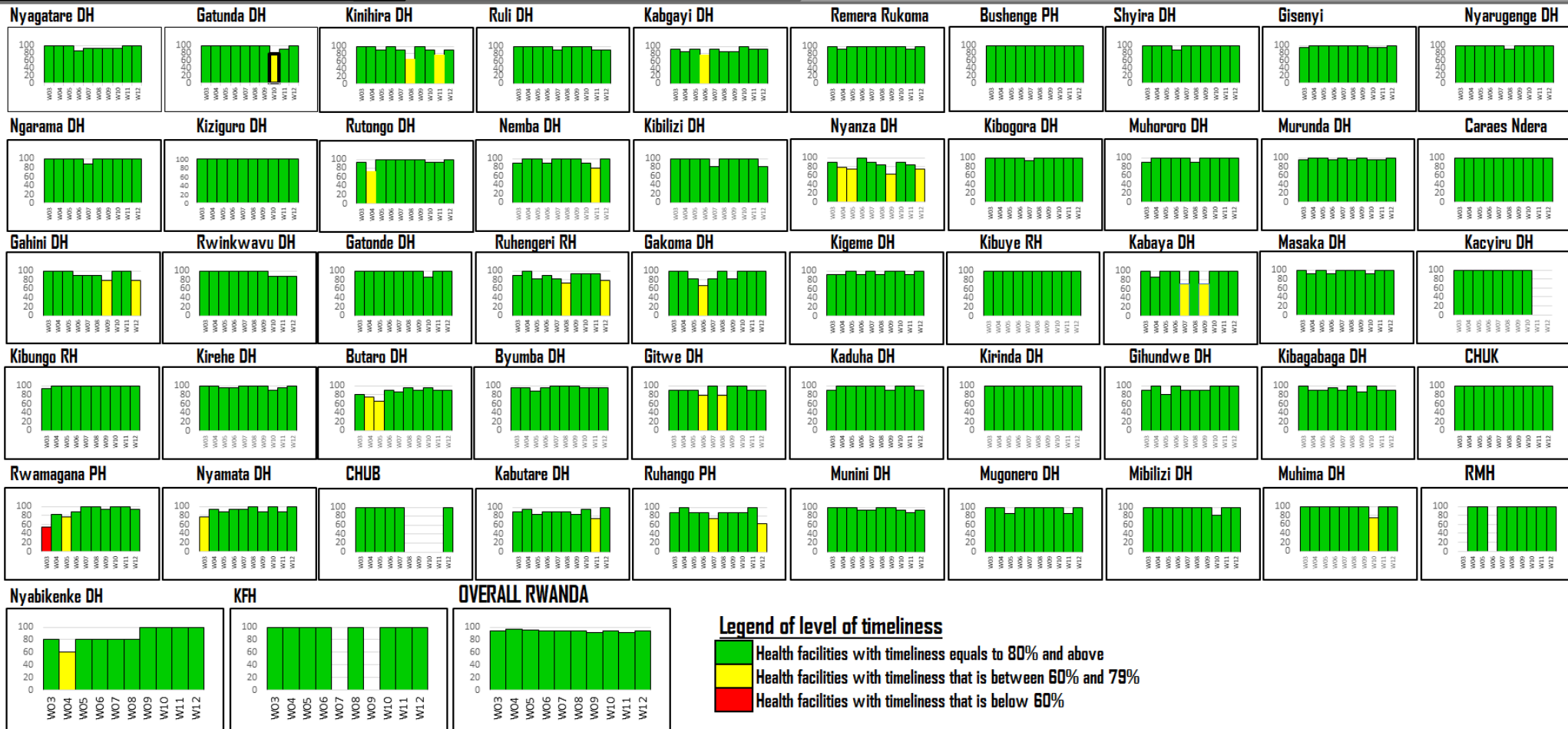
TREND OF IDSR REPORTS TIMELINESS

(Previous 10 weeks: Wk 03- Wk12/2023)

OVERALL

RWANDA

Timeliness – Wk 12/2023: 95%



Timeliness is calculated as the proportion of received reports on time over the expected reports by week in a catchment area

Observation: During this week 12/2023, the overall IDSR reports timeliness was 95%. However, Nyanza and, Gahini DHs as well as Ruhengeri RH and Ruhango PH had a low reporting timeliness (ranging between 60% and 79%), Kacyiru had a very low timeliness (below 60%), while other hospitals had a good reporting rate of completeness (equals or above 80%). The hospitals with a low reporting timeliness are recommended to submit on time all required reports (Monday before 12:00)

IDSR WEEKLY REPORTABLE DISEASES

week 03 to week 12/2023

Non-Bloody

Diarrhea cases

Wk03 – Wk12/2023:

33,817

Wk11: 3,303

Flu syndrome cases

Wk03 – Wk12/2023:

166,861

Wk12: 14,155

Malaria cases

Wk03 – Wk12/2023:

20,741

Wk12: 2,254

Severe Pneumonia

cases

Wk03 –

Wk12/2023: 4,660

Wk12: 438

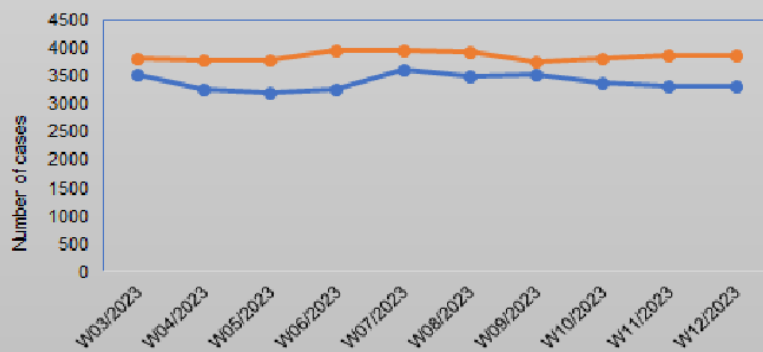
Rabies exposure (Dog bite) cases:

Wk03 – Wk12/2023:

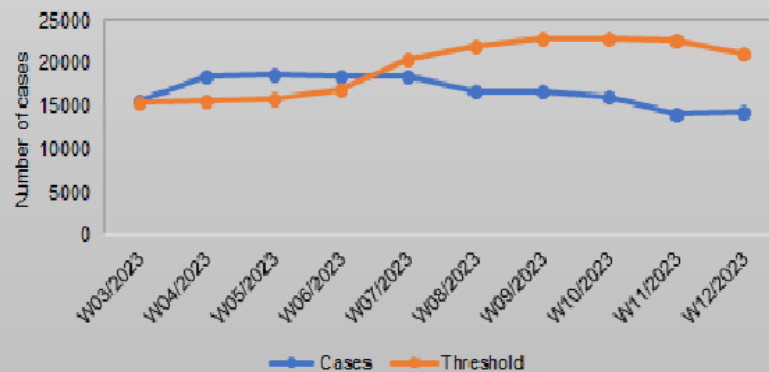
243

Wk12: 30

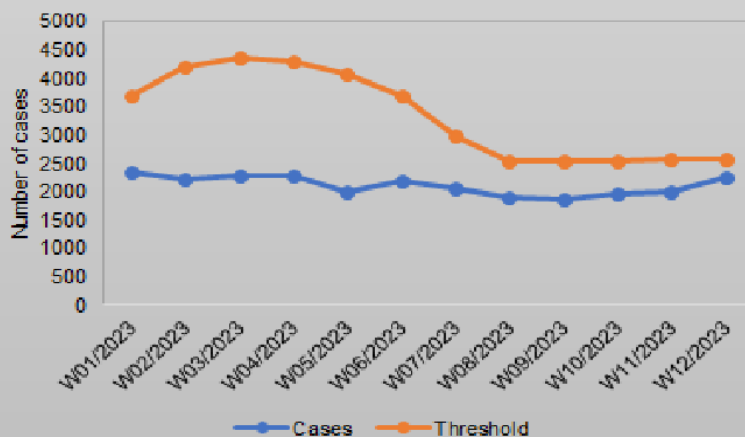
Trend of Non Bloody Diarrhea cases for under 5 years old (week 03-12/2023)



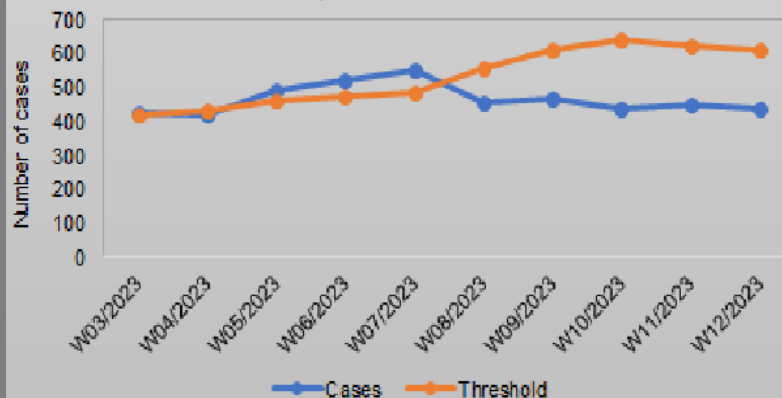
Trend of Flu syndrome cases in Rwanda (Wk 03-12/2023)



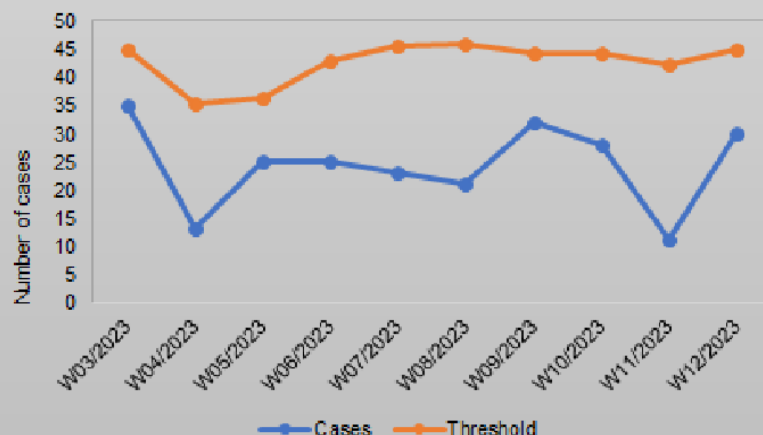
Trend of Malaria cases in Rwanda (week 01-12/2023)



Trend of Severe Pneumonia cases in Rwanda (week 03-12/2023)



Rabies exposure (dog bite) in Rwanda week 03 to 12/2023



During the week 12/2023, no weekly reportable disease (WRD) crossed the thresholds. However, the trend of malaria showed an increase of cases in this week, compared with the previous weeks, and that required a particular monitoring. No case reported for Brucellosis and Trypanosomiasis.

IDSR IMMEDIATE REPORTABLE DISEASES

Week 12/2023

| Hospital | Organisation unit name | Acute hemorrhagic fever syndrome | Bacterial Meningitis | Bloody Diarrhea (Shigellosis) | Cholera | Measles | Typhoid Fever | Severe malaria |
|------------|-------------------------------|----------------------------------|----------------------|-------------------------------|---------|---------|---------------|----------------|
| Nyarugenge | Biryogo CS | 0 | 0 | 2 | 0 | 0 | 0 | 0 |
| Kabutare | Butare Chu Hnr (huye) | 0 | 2 | 0 | 0 | 0 | 0 | 0 |
| Byumba | Byumba DH | 0 | 0 | 0 | 0 | 0 | 0 | 1 |
| Kibagabaga | Deus Est Neuro-Rehabilitation | 0 | 0 | 0 | 0 | 0 | 2 | 0 |
| Gakoma | Gakoma CS | 0 | 0 | 1 | 0 | 0 | 0 | 0 |
| Gakoma | Gikonko (Gisagara) CS | 0 | 0 | 1 | 0 | 0 | 0 | 0 |
| Gisenyi | Gisenyi DH | 0 | 0 | 0 | 1 | 0 | 0 | 0 |
| Gakoma | Gishubi CS | 0 | 0 | 3 | 0 | 0 | 0 | 0 |
| Mugonero | Gisovu CS | 0 | 0 | 0 | 0 | 1 | 0 | 0 |
| Kabaya | Kabaya DH | 0 | 0 | 0 | 0 | 0 | 0 | 1 |
| Nemba | Karambo (gakenke) CS | 0 | 0 | 1 | 0 | 0 | 0 | 0 |
| Kibogora | Kibogora DH | 0 | 0 | 0 | 2 | 0 | 0 | 0 |
| Masaka | Kicukiro CS | 0 | 0 | 0 | 0 | 3 | 0 | 0 |
| Kigeme | Kigeme DH | 0 | 0 | 0 | 0 | 0 | 0 | 1 |
| Kiziguro | Kiziguro DH | 2 | 0 | 0 | 0 | 0 | 0 | 0 |
| Kirehe | Mahama Refugee Camp HC | 0 | 0 | 0 | 0 | 6 | 0 | 0 |
| Kirehe | Mahama Refugee Camp II HC | 0 | 0 | 0 | 0 | 2 | 0 | 0 |
| Masaka | Masaka DH | 0 | 0 | 0 | 0 | 0 | 0 | 1 |
| Gatunda | Mimuri CS | 0 | 0 | 0 | 0 | 1 | 0 | 0 |
| Butaro | Ndongozi CS | 0 | 0 | 0 | 0 | 1 | 0 | 0 |
| Nemba | Nemba CS | 0 | 0 | 0 | 0 | 1 | 0 | 0 |
| Muhororo | Ntobwe CS | 0 | 0 | 1 | 0 | 0 | 0 | 0 |
| Kigeme | Nyamagabe CS | 0 | 0 | 0 | 0 | 1 | 0 | 1 |
| Muhima | Polyclinique de l'Etoile | 0 | 0 | 0 | 0 | 0 | 1 | 0 |
| Gisenyi | Sainte Immaculee Clin | 0 | 0 | 0 | 0 | 0 | 3 | 0 |
| Mibilizi | Wibabara DISP | 0 | 0 | 2 | 0 | 0 | 0 | 0 |
| Total | | 2 | 2 | 11 | 3 | 16 | 6 | 5 |

Alerts

| Diseases | Cases | Alert threshold | Recommendations |
|----------------|-------|-----------------|--|
| AHF | 2 | 1suspected case | Continue the surveillance,even if the labo result was negative |
| Cholera | 3 | 1suspected case | Continue the surveillance |
| Severe malaria | 5 | 1confirmed case | Continue the surveillance |

Observation: During the week 12/2023, cases of immediate reportable diseases (IRD) notified include: Acute hemorrhagic Fever syndrome (AHF), Bloody diarrhea, Measles, Typhoid fever and severe malaria. Except severe malaria, other cases were suspected; samples were taken and sent to NRL for testing.

Public Health Surveillance & Emergency

Preparedness and Response Division

Key highlights in week 12/2023

ONGOING OUTBREAKS

I. In Rwanda

1. Measles outbreak in Rubavu and Kirehe districts:

- In Epi week 12, measles outbreaks were still ongoing in Rubavu and Kirehe districts.
 - In Rubavu District, no additional case was confirmed during the Epi week 12. As of 26 March, 23 measles cases have been identified including 8 cases laboratory confirmed and 15 cases confirmed by epidemiological link.
 - In Kirehe district, 5 additional cases were identified in Mahama Refugee camp by epidemiological link and no one is vaccinated for measles. As of 26 March, the district totalizes 29 measles. Eight (8) cases are laboratory confirmed and 21 cases are confirmed by epidemiological link.

2. Cholera outbreak Nyamasheke district :

- Since 27th February 2023, the Cholera outbreak is ongoing in Kibogora DH catchment area. During the Epi week 12; four (4) new cases were identified (1 case is laboratory confirmed, and 3 cases were confirmed by epidemiological link). As of 26 March 2023; 7 cholera confirmed cases were identified at Kibogora DH area.

II. In neighboring countries

1. The Ministry of Health in Republic of Tanzania declared an outbreak of Marburg virus disease (MVD) on 21 March 2023, in Bukoba district of Kagera region. 8 cases were confirmed including 5 deaths.
2. Burundi reported a case of type 2 vaccine-derived polio linked to the novel oral polio vaccine type 2 (nOPV2). The main risks associated with cVDPV2 in Burundi are gaps in routine immunization.

Actions taken to respond to the outbreaks .

For Measles outbreaks

- Continuous active cases search,
- Case management of patients (treatment, isolation),
- measles vaccination campaign

For Cholera outbreak:

- Community sensitization for hygiene and sanitation

Public health actions for MVD and Polio outbreaks prevention and control:

MVD outbreak Tanzania: MoH is coordinating a response to the outbreak with the support of partners. Rapid response teams were deployed from district and regional levels to conduct investigations, infection control measures and other measures.

Rwanda Preparedness: puts in place preventive measures including temperature screening at all points of entry for passengers coming in Rwanda, reinforced VHF surveillance in all health facilities and updated the MVD preparedness and contingency plan.

Polio outbreaks in Burundi: Local and national health authorities, supported by Global Polio Eradication Initiative (GPEI) partners, are conducting a risk assessment and further investigations to determine the extent of the outbreak and to guide the response and polio vaccination campaign in the coming weeks, to protect all eligible children (ages 0-7) from the virus and continue other measures in collaboration with neighboring countries.

Rwanda preparedness: reinforced awareness in public and health facilities, conducted polio surveillance risk assessment to identify gaps and strategies to address them are implemented. A plan of polio surveillance in the context of nOpv2 use in Rwanda was developed and Polio outbreak response plan is under revision.

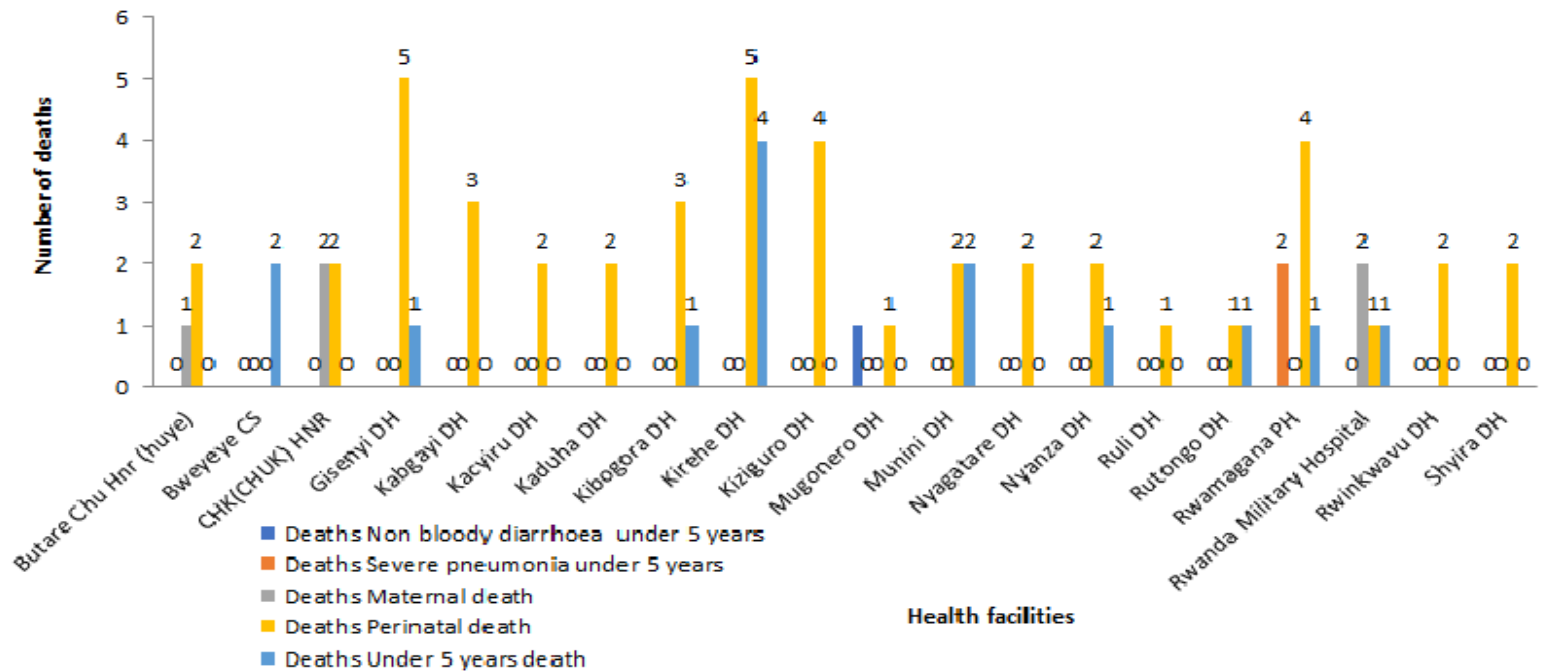
TREND OF INCIDENCE RATE OF COVID-19 in week 12/2023

In the last 7 days (from 20 to 26 March 2023), 5 cases were detected countrywide with a positivity rate of 0.08% compared to 7 positive cases that were detected last week with a positivity rate of 0.1%. This shows a decrease in cases in the previous 7 days.

Total Covid-19 cases: 133.220 (5 new cases: 2 asymptomatic cases and 3 symptomatic cases). 3 cases were from Kigali City, 1 from in Kirehe and 1 from Ngororero district.

SUMMARY OF DEATHS REPORTED THROUGH e-IDSr (Week 12/2023)

Number of deaths reported in IDSr week 12/2023



During the week 12; Perinatal deaths had a highest number: 46, especially in Gisenyi and Kirehe DH (5 deaths for each one). There was 14 under 5 years deaths; 5 Maternal deaths, 2 deaths due to severe pneumonia < 5 and 1 due to non-bloody diarrhea. Death audit is recommended

SURVEILLANCE (e-CBS) IN e-IDSr FOR WEEK 12/2023

In epidemiological week 12/2023, no event was reported in (electronic community case based surveillance (eCBS) .

HEALTH FACILITIES THAT DID NOT SUBMIT IDSR WEEKLY REPORT IN WEEK 12/2023

| Hospital | Organisation unit name |
|-----------|------------------------|
| Gahini | Buhabwa CS |
| | Gahini CS |
| Ruhengeri | Gasiza (musanze) CS |
| | Kimonyi CS |
| | Nyakinama CS |
| Byumba | Gicumbi Prison |
| Kabgayi | Gikomero (Kabgayi) CS |
| Kibilizi | Gikore CS |
| | Kibilizi DH |
| Ruhango | Kigoma CS |
| | Ruhango PH |
| | Kizibere CS |
| Nyanza | Gahombo CS |
| | Mututu CS |
| | Ntyazo CS |
| | Nyamiyaga (Nyanza) CS |
| Rwinkwavu | Nyamirama CS |
| Rwamagana | Ruhunda CS |
| Ruli | Rukura CS |