

WEEKLY EPIDEMIOLOGICAL BULLETIN

Week 38: 19 Sept - 25 Sept 2022

Released on: 30th Sept 2022

PUBLIC HEALTH SURVEILLANCE & EMERGENCY PREPAREDNESS AND RESPONSE DIVISION

Editorial message

Effective and efficient Integrated Disease Surveillance and Response (IDSR) systems contribute to the reduction of morbidity, disability and mortality from disease outbreaks and health emergencies.

This weekly bulletin presents the epidemiological status of the diseases under surveillance in Rwanda. These data are useful to trigger a rapid response for rapid impact, actions and results oriented, a proactive preparedness, risk mitigation and prevention, intelligence, real-time information, and communication for decision making.

Editorial board

Surveillance Unit, Outbreak Preparedness and Response Unit, Food and Waterborne Diseases Unit, Avian Influenza and Highly Pathogenic Diseases Unit, One health Unit

Contact information

Dr Edson Rwagasore, DM-PHS&EPR Division
Tel: +250788599240
Email: edson.rwagasore@rbc.gov.rw
Toll free number: 114

Overview

This Weekly Bulletin focuses on diseases under surveillance in Rwanda. This week's articles cover:

- ☞ Reports completeness
- ☞ Reports timeliness
- ☞ Trend of weekly reportable diseases
- ☞ Distribution of Immediate reportable diseases
- ☞ COVID-19 situation
- ☞ Reported deaths
- ☞ Health facilities with no reports

Acknowledgement

The authors would like to thank Health facilities of Rwanda for providing the data used in this bulletin.

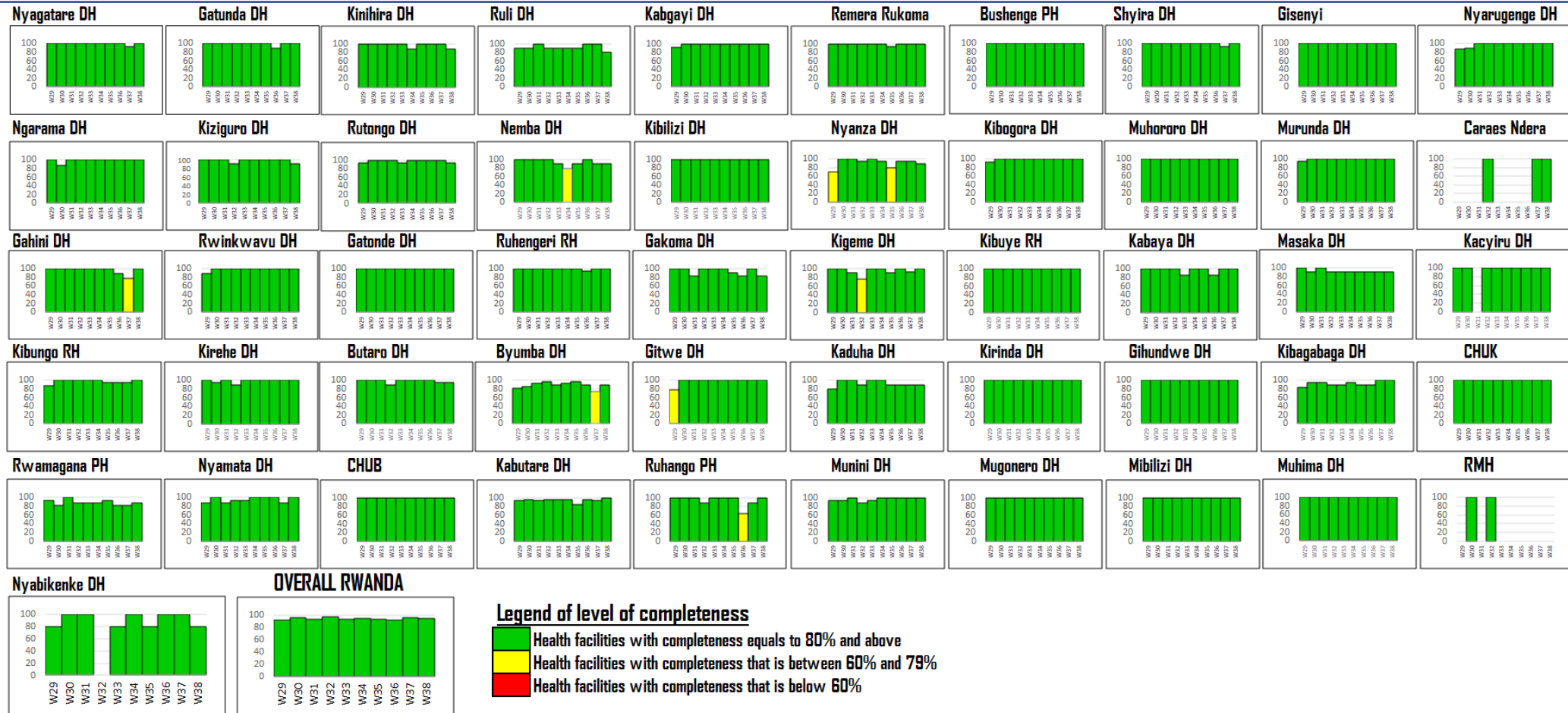
TREND OF IDSR REPORTS COMPLETENESS

(Previous 10 weeks: Wk29 – Wk38)

OVERALL

RWANDA

Completeness – Wk 38: 95%



Completeness is calculated as the proportion of received reports over expected reports by week in a catchment area

Observation: During this week 38, the overall IDSR reports completeness was 95%. However, Rwanda Military Hospital indicated the low level of completeness (Below 60 %) as well as it did not report. We recommend it to conduct the root cause analysis and set measures that will facilitate to report all required reports.

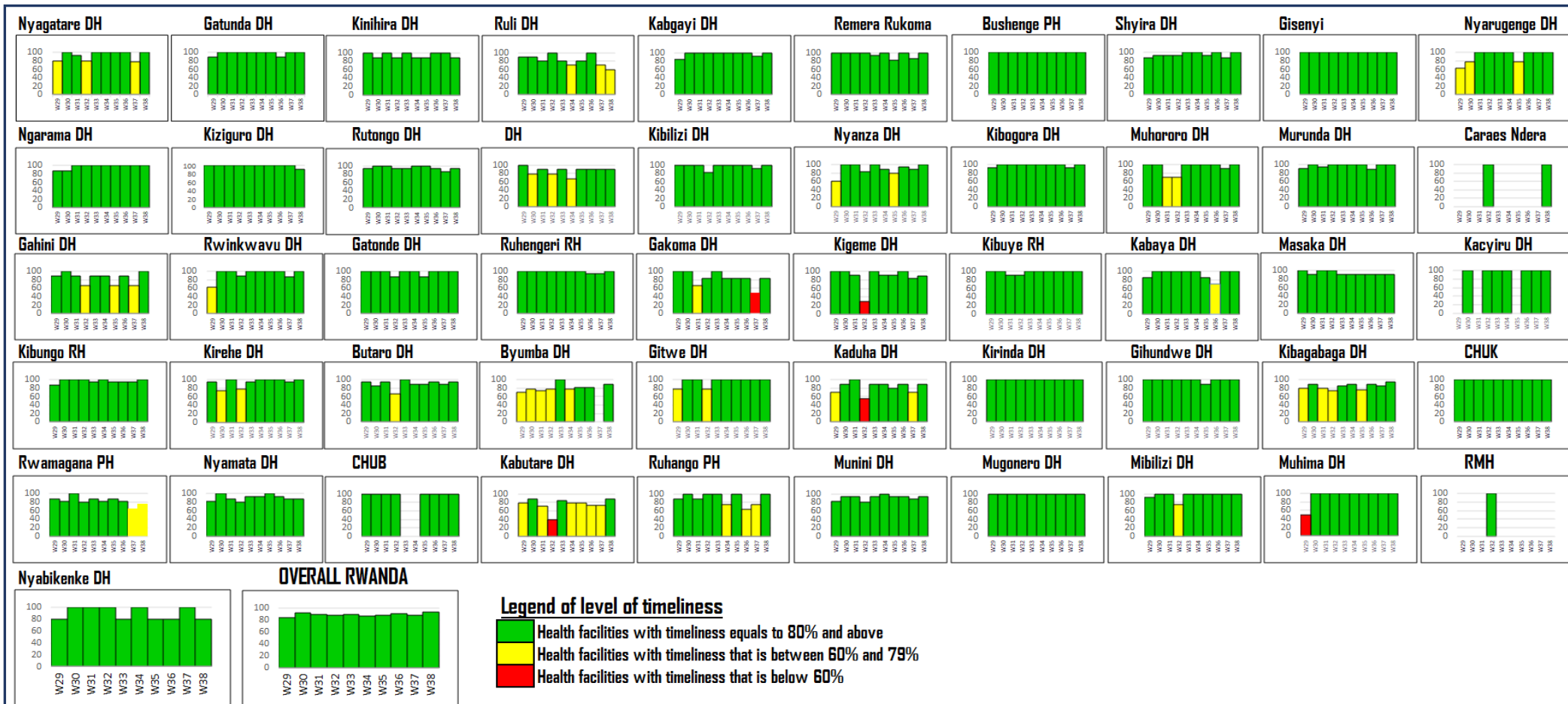
TREND OF IDSR REPORTS TIMELINESS

(Previous 10 weeks: Wk29 – Wk38)

OVERALL

RWANDA

Timeliness – Wk 38: 94%



Timeliness is calculated as the proportion of received reports on time over the expected reports by week in a catchment area

Observation: During this week 38, the overall IDSR reports timeliness was 94%. The following catchment area indicated the low level of timeliness (Between 60 and 79%): **Rwamagana PH** and **Ruli DH**, while **Rwanda Military Hospital** did not report. We recommend them to conduct the root cause analysis and set measures that will facilitate them to report all required reports on time (Monday of each week 12 pm).

IDSr WEEKLY REPORTABLE DISEASES - 2022

Non-Bloody Diarrhea cases

Wk01 – Wk38: 191,936

Wk38: 5,409

Flu syndrome cases

Wk01 – Wk38: 630,165

Wk38: 11,383

Malaria cases

Wk01 – Wk38: 159,910

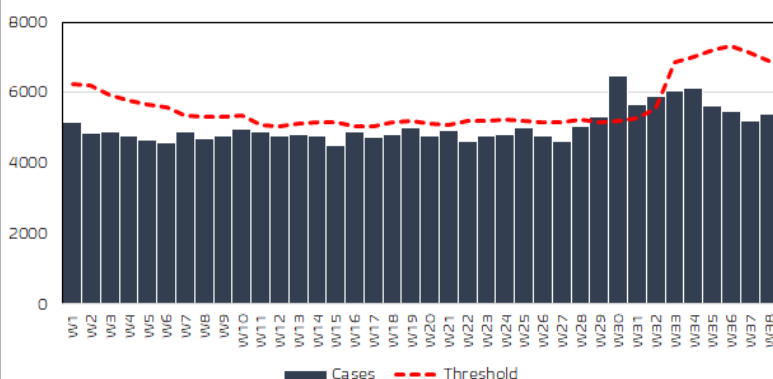
Wk38: 4,196

Severe Pneumonia cases

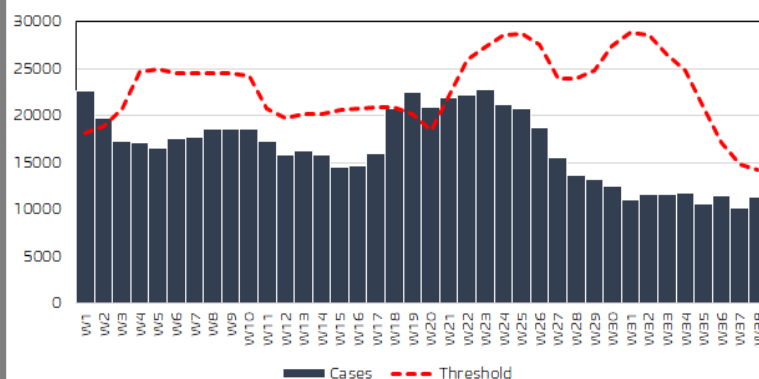
Wk01 – Wk38: 11,932

Wk38: 227

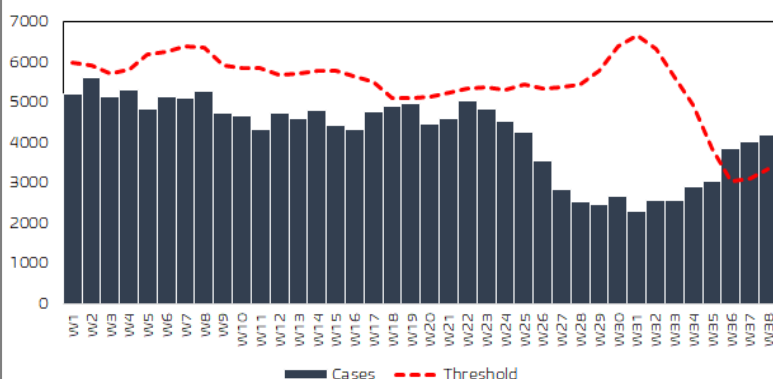
Trend of Non Bloody Diarrhea cases in Rwanda 2022
(Wk1 - Wk38)



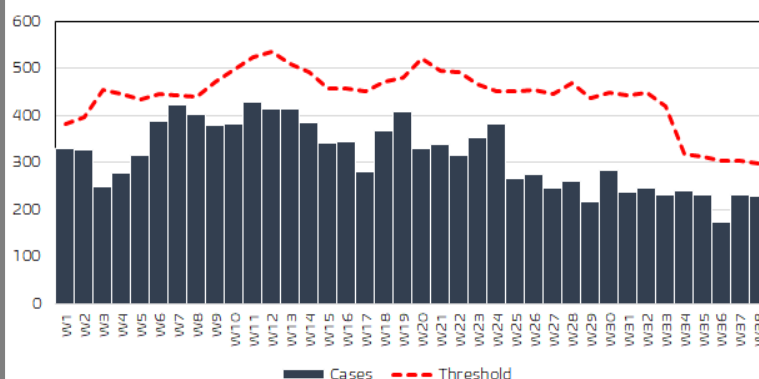
Trend of Flu syndrome cases in Rwanda 2022
(Wk1 - Wk38)



Trend of Malaria cases in Rwanda 2022
(Wk1 - Wk38)



Trend of Severe pneumonia cases (<5years) in Rwanda
2022 (Wk1 - Wk38)



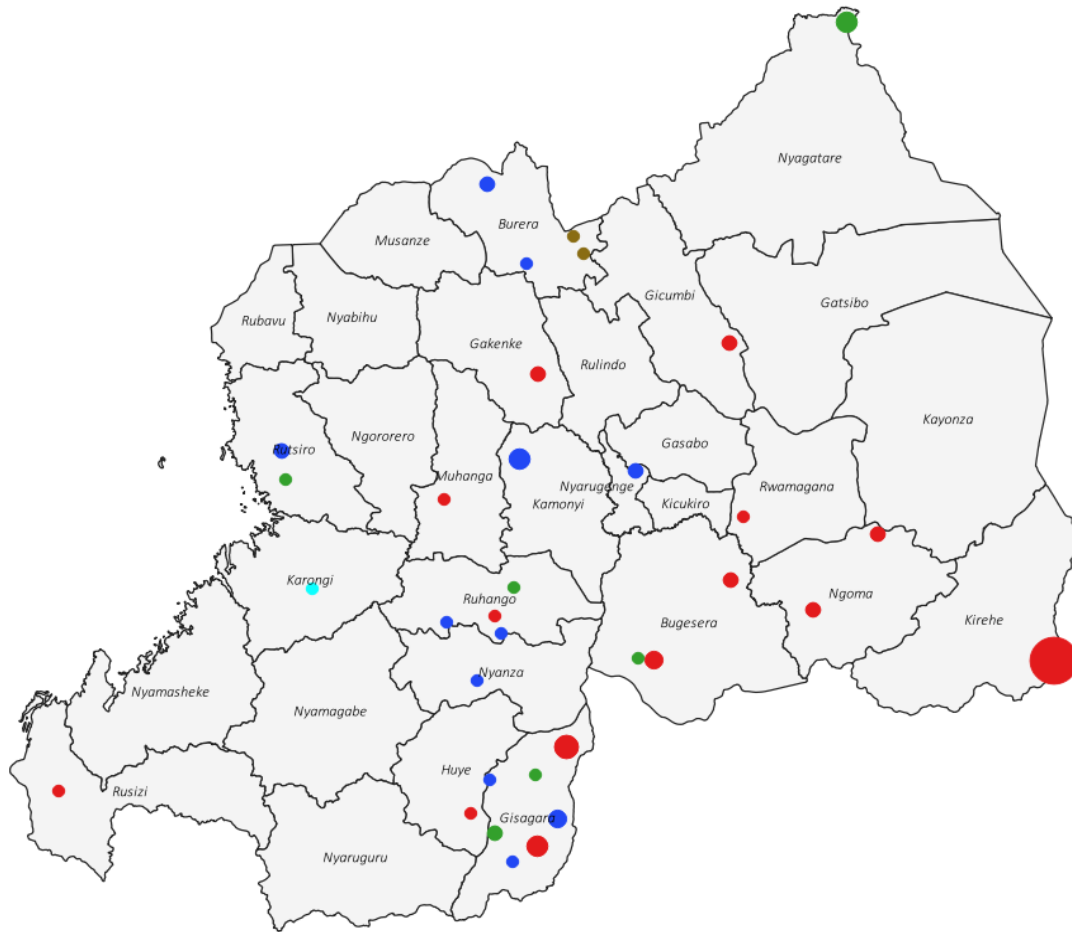
Non bloody diarrhea, Malaria, Flu syndrome and Severe pneumonia are reported through e-IDSr by health facilities on a weekly basis.

During this week of 38, the data analysis showed that only **Malaria** has crossed the threshold on National level. Considering the level of health facilities catchment area, the following health facilities have reached their threshold for Malaria:

- Remera Rukoma DH
- Kibagabaga DH
- Rutongo DH

Note: The investigation of the increase in number of cases among the above health facilities is ongoing

IDSR IMMEDIATE REPORTABLE DISEASES – Wk38



IDSR Immediate reportable diseases by Health facilities

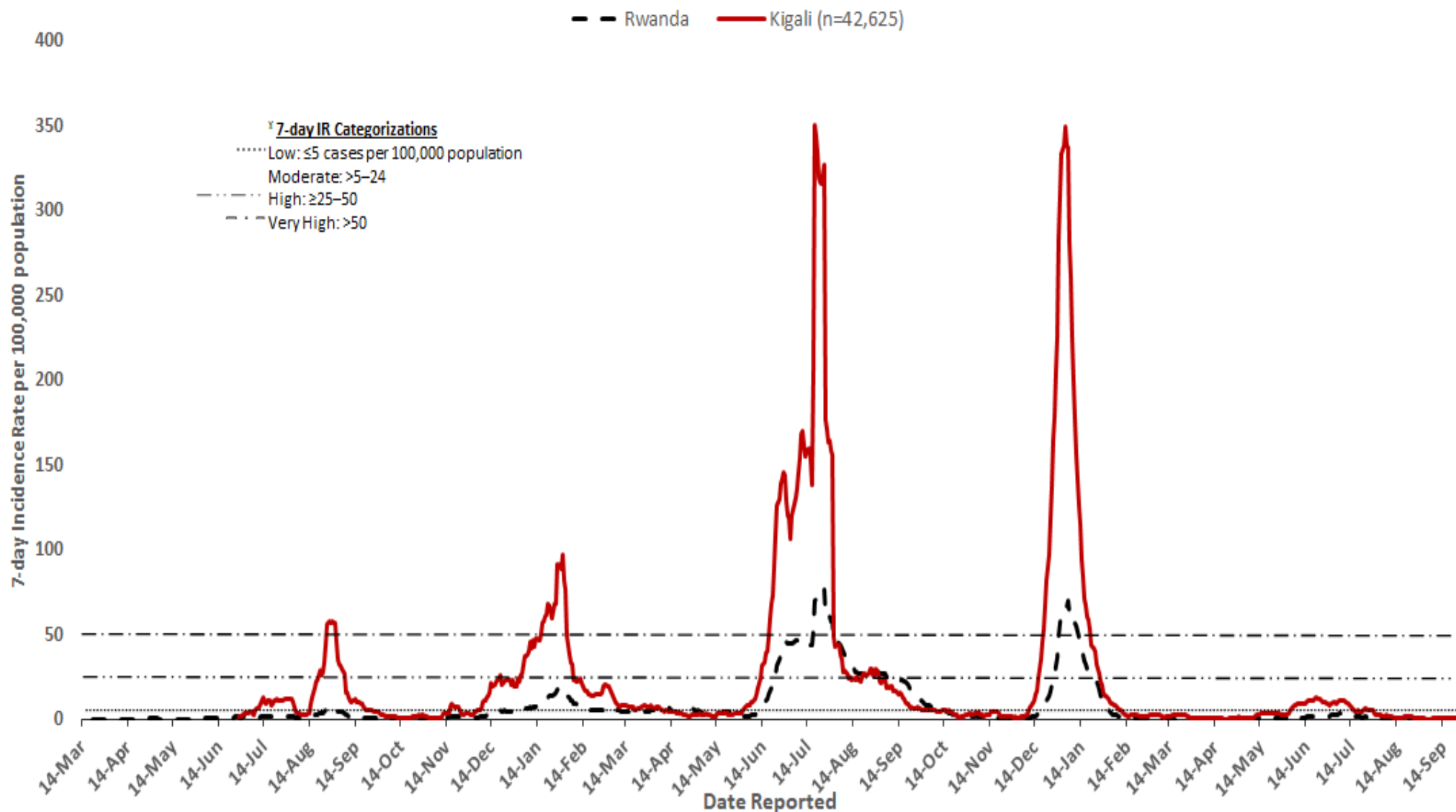
- Chicken Pox:** 68-Mahama Refugee Camp
6-Gakoma HC
4-Mugombwa Refugee Camp
3-Gikumdamvura HC
2-Muko HC, 2-Rilima HC, 2-Rukoma Sake HC, 2-Rwankuba HC
2-Gasetsa HC, 1-CHUB, 1-Mibilizi DH, 1-Mushishiro HC
1-Nyakaliro HC, 1-Ruhango HC
- Mumps:** 1-Kivuye HC, 1-Gatebe HC
- Rabies:** 1-Musango HC
- Bloody diarrhea:** 4-Karama HC, 3-Kirarambogo HC
2-Cor-Unum HC, 2-Gitare HC, 2-Murunda HC
1-Gitwe HC, 1-Kigoma HC, 1-Murunda DH
1-Ndongozi HC, 1-Nyanza DH, 1-Save HC
1-Nyabinyenga HC
- Measles:** 4-Kagitumba HC
2-Kibilizi HC
1-Kizibere HC, 1-Musha HC, 1-Ruhuha HC, 1-Crete Congo Nil HC

Alerts				
District	Disease	Case	Alert threshold	Recommendations
Kirehe	Chicken Pox	68	10 cases per week	Verify, investigation and reports as soon as possible

Observation: During the week 38, the reported IDSR immediate reportable diseases were Chicken pox, Mumps, Rabies, Bloody diarrhea and Measles

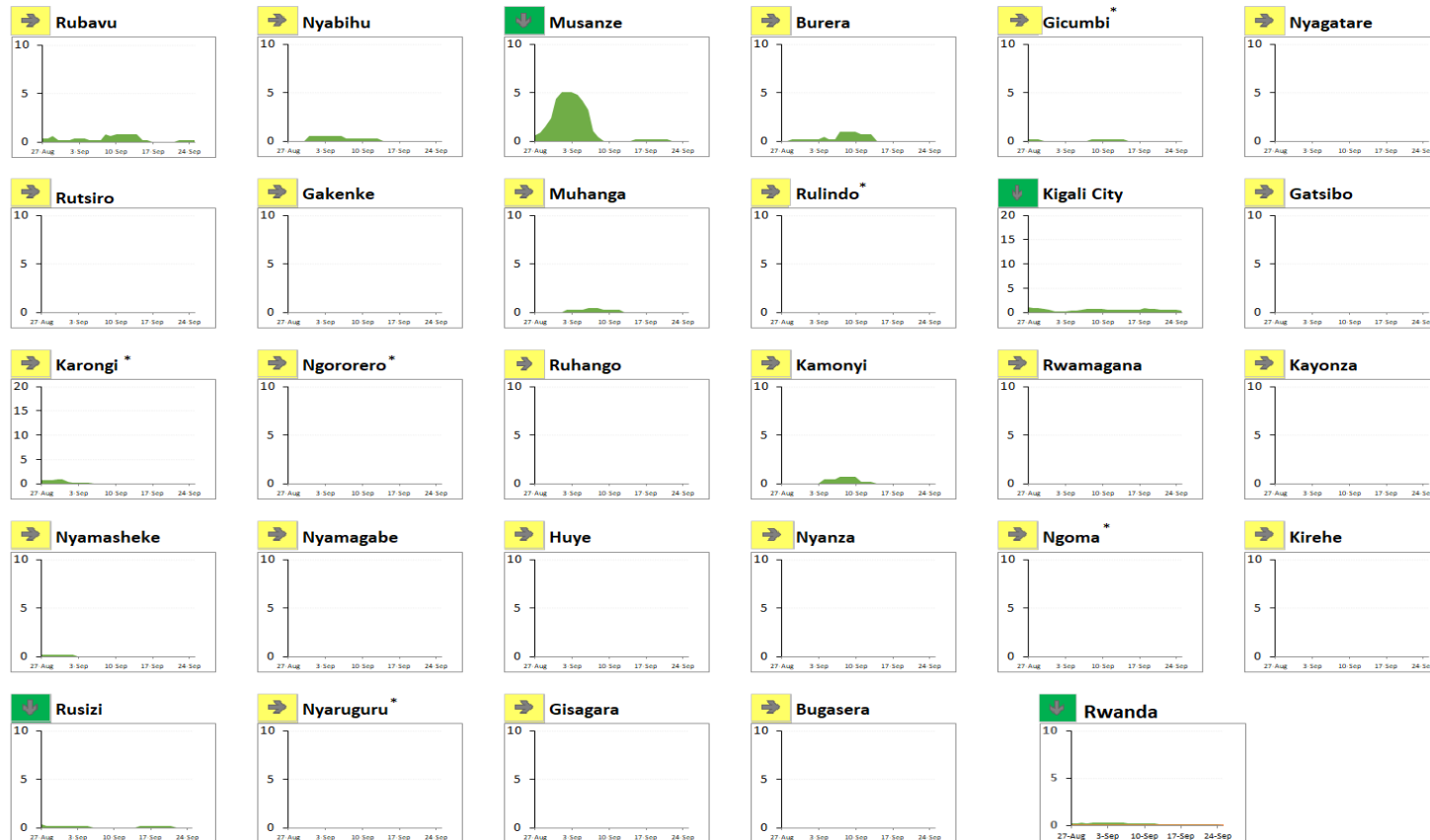
TREND OF 7-DAY INCIDENCE RATE OF COVID-19

COVID-19 Incidence Rate (IR) in Kigali City and Rwanda, March 14, 2020–September 25, 2022



TREND OF INCIDENCE RATE OF COVID-19 BY DISTRICTS

COVID-19 Cumulative 7-day (September 19–September 25) Incidence Rate (IR) and Trend (week-to-week % change) in Rwanda, August 27–September 25 (30 days), 2021



* Note: y-axis values are greater due to higher incidence rate peaks compared with other districts during the previous 30-days

	Distribution of Districts	
Incidence rate in the last 7 days per 100,000	No.	%
Low: ≤5 cases	30	100%
Moderate: 5–24 cases	0	0%
High: ≥25–50 cases	0	0%
Very High: >50 cases	0	0%
Percentage change in cases in last 7 days vs previous 7 days		
Decrease: ≤ -10% change	↓	5 17%
Stable: > -10% change and <10% change	→	25 83%
Increase: ≥10% change	↑	0 0%

Observation: During the week 38, The overall incidence rate of Rwanda was 0.05 case per 100,000 population (Decreased from 0.1 cases per 100,000 population in week 37). All districts of Rwanda presented a very low incidence rate (IR below 5 cases). 25 districts showed a stable incidence rate for this week compared to previous week while 5 districts had a decreased incidence rate in this week compared to the previous week.

UPDATE ON EBOLA VIRUS DISEASE

Ebola virus disease in Uganda-Mubende district

1. Key highlights

On 20th September 2022, the Ministry of Health declared an outbreak of Sudan ebolavirus (EVD) after a case managed at Mubende Regional Referral Hospital (MRRH) in Mubende district was confirmed through testing at the Uganda Virus Research Institute (UVRI). This follows investigations by the National Rapid Response Team of suspicious deaths that had occurred in the district earlier in the month. This is the first time in more than a decade that Uganda reports an outbreak of Sudan ebolavirus.

- Two new EVD confirmed and no new deaths in the past 24 hours.
- Contacts follow-up rate was 60%.
- CFR among confirmed is 09/43 (20.9%)
- Total of 10 healthcare workers infected, with 3 deaths.

Data update as of 02nd October 2022 at 22 :00 HRS

	Districts Affected	CASES	Deaths		Recoveries
		Confirmed	Confirmed	Probable	
New	01	02	00	-	00
Total	05	43	09	20	04

2. Action to date in Uganda

The Ministry of Health, Districts and Partners in **Uganda** are implementing several outbreak control interventions in Mubende and her surrounding districts to contain the disease spread.

3. Key strategies ongoing for Ebola Virus outbreak preparedness in Rwanda

Key strategies in Rwanda

- Activate all command post in all districts
- Temperature screening in all POEs
- Map all people upon entry coming from Mubende, Kyegegwa and Kassanda region to be quarantined for 21 days
- Community screening for people with symptoms by CHWs
- Awareness to both community and health care workers
- Investigate and follow up of cases with unexplained fever who consulted health facilities

SUMMARY OF REPORTED DEATHS THROUGH e-IDSr (Wk 38)

During Week 38, there was no deaths reported from all health facilities through e-IDSr.

HEALTH FACILITIES WITH NO REPORTS RECEIVED IN e-IDSr FOR Wk 38

Province	District	Hospital	Health Facility
East	Gatsibo District	Kiziguro DH	Kibondo HC
East	Rwamagana District	Rwamagana DH	Munyiginya HC
East	Rwamagana District	Rwamagana DH	Nyagasambu HC
Kigali City	Kicukiro District	RMH	Rwanda Military Hospital
North	Gicumbi District	ByumbaDH	Camp Gihembe CS
North	Gicumbi District	ByumbaDH	Gicumbi Prison
North	Gicumbi District	ByumbaDH	Rubaya(Gicumbi) HC
North	Burera District	Butaro DH	Kinoni HC
North	Rulindo District	Rutongo DH	Muyanza HC
North	Rulindo District	Kinihira DH	Tare HC
North	Gakenke District	Ruli DH	Rukura HC
North	Gakenke District	Ruli DH	Ruli HC
North	Gakenke District	Nemba DH	Rutenderi HC
South	Nyanza District	Nyanza DH	Nyanza Prison
South	Nyanza District	Nyanza DH	Nyanza DH
South	Muhanga District	Nyabikenke DH	Nyabinoni HC
South	Nyamagabe District	Kaduha DH	Kibumbwe HC
South	Gisagara District	Gakoma DH	Gakoma DH