

WEEKLY EPIDEMIOLOGICAL BULLETIN

Week 43: 24-30 Oct 2022

Released on: 3rdth November 2022



PUBLIC HEALTH SURVEILLANCE & EMERGENCY PREPAREDNESS AND RESPONSE DIVISION

Editorial message

Effective and efficient Integrated Disease Surveillance and Response (IDSR) systems contribute to the reduction of morbidity, disability and mortality from disease outbreaks and health emergencies.

This weekly bulletin presents the epidemiological status of the diseases under surveillance in Rwanda. These data are useful to trigger a rapid response for rapid impact, actions and results oriented, a proactive preparedness, risk mitigation and prevention, intelligence, real-time information, and communication for decision making.

Editorial board

Surveillance Unit, Outbreak Preparedness and Response Unit, Food and Waterborne Diseases Unit, Avian Influenza and Highly Pathogenic Diseases Unit, One health Unit

Overview

This Weekly Bulletin focuses on diseases under surveillance in Rwanda. This week's articles cover:

- ☞ Reports completeness
- ☞ Reports timeliness
- ☞ Trend of weekly reportable diseases
- ☞ Distribution of Immediate reportable diseases
- ☞ COVID-19 situation
- ☞ Ebola situation
- ☞ Reported deaths
- ☞ Health facilities with no reports

Acknowledgement

The authors would like to thank Health facilities of Rwanda for providing the data used in this bulletin.

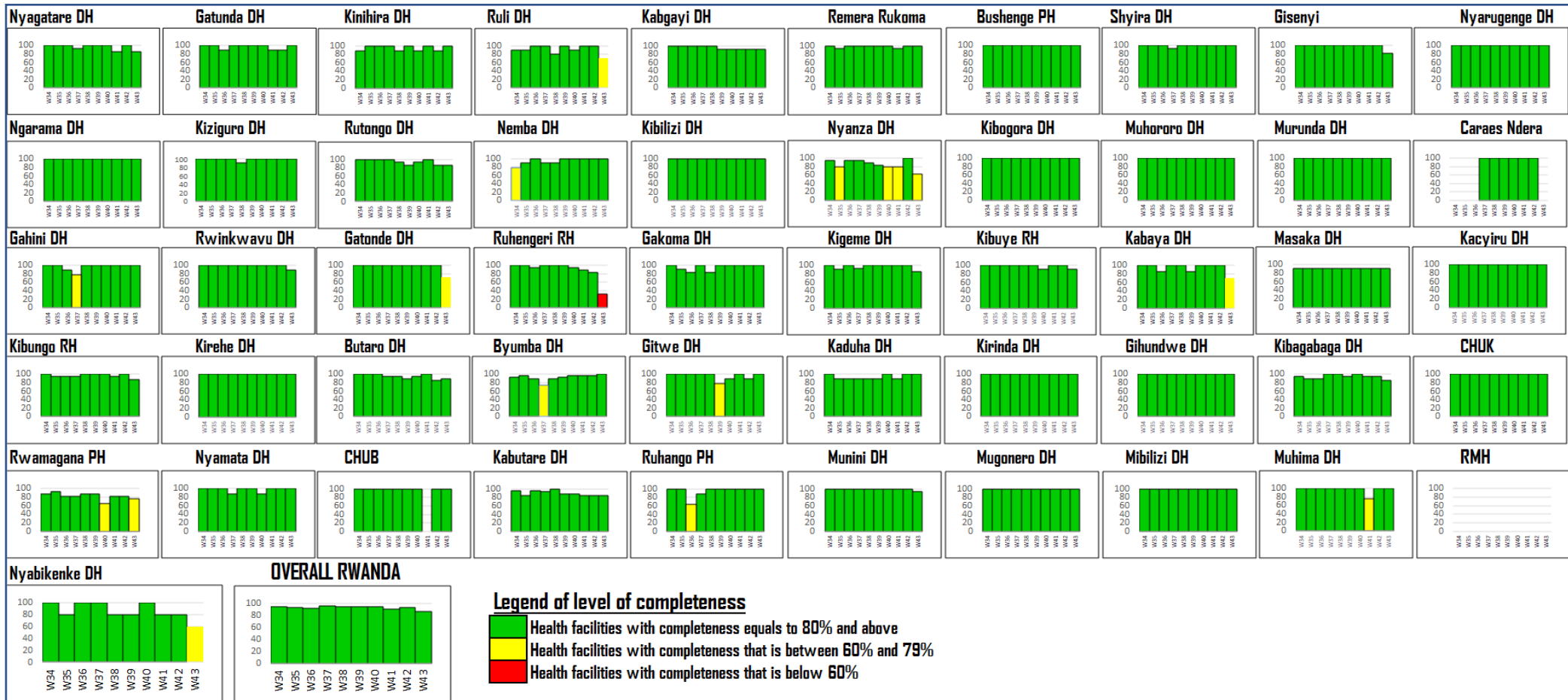
TREND OF IDSR REPORTS COMPLETENESS

(Previous 10 weeks: Wk34 – Wk43)

OVERALL

RWANDA

Completeness – Wk 43: 90%



Completeness is calculated as the proportion of received reports over expected reports by week in a catchment area

Observation: During this week 43, the overall IDSR reports completeness was 90%. However, many hospitals indicated a low completeness rate: between 60-79%: Ruli DH, Nyanza DH, Kabaya DH, Gatonde DH, Nyabikenke DH, Rwamagana PH; below 60%: Ruhengeri DH, while Rwanda Military Hospital and Ndera hospital did not report. We recommend these hospitals to conduct the root cause analysis and set measures that will facilitate to report all required reports.

TREND OF IDSR REPORTS TIMELINESS

(Previous 10 weeks: Wk34 – Wk43)

OVERALL

RWANDA

Timeliness – Wk 43: 88%



Timeliness is calculated as the proportion of received reports on time over the expected reports by week in a catchment area

Observation: During this week 43, the overall IDSR reports timeliness was 88%. The following catchment area indicated the low level of timeliness (Between 60 and 79%): Ruli DH, Nyanza DH, Kabaya DH, Gatonde DH, Nyabikenke DH, Rwamagana PH, Rutongo DH, Kabutare DH, Kibungo DH; (below 60%): Ruhengeri DH, while Rwanda Military Hospital and Ndera hospitals did not report. We recommend these hospitals to conduct other root cause analysis and set measures that will facilitate them to report all required reports on time (Monday of each week 12 pm).

IDSR WEEKLY REPORTABLE DISEASES - 2022

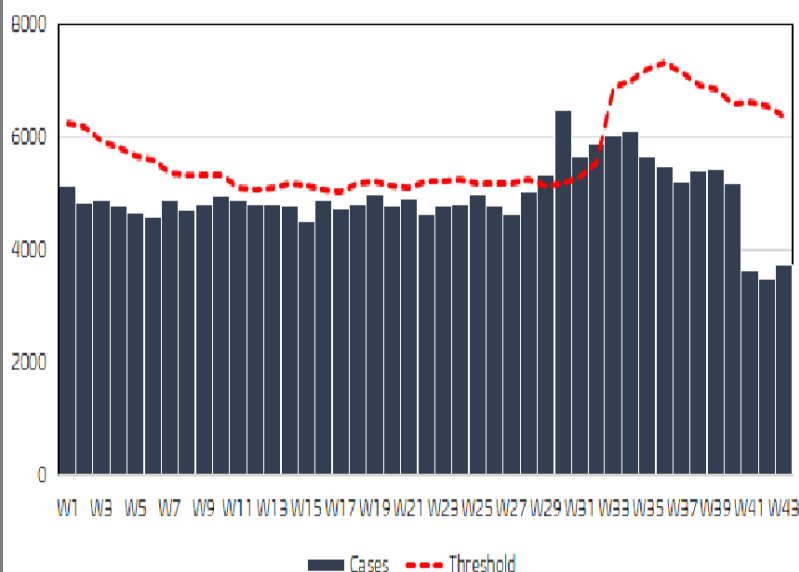
Non-Bloody Diarrhea cases
Wk01 – Wk43: 213,326
Wk43: 3,722

Flu syndrome cases
Wk01 – Wk43: 688,502
Wk43: 13,121

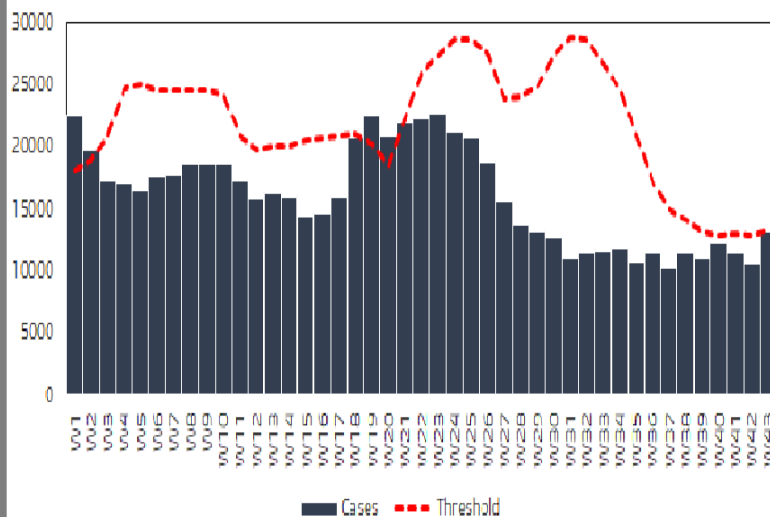
Malaria cases
Wk01 – Wk43: 177,603
Wk43: 2,843

Severe Pneumonia cases
Wk01 – Wk43: 13,112
Wk43: 269

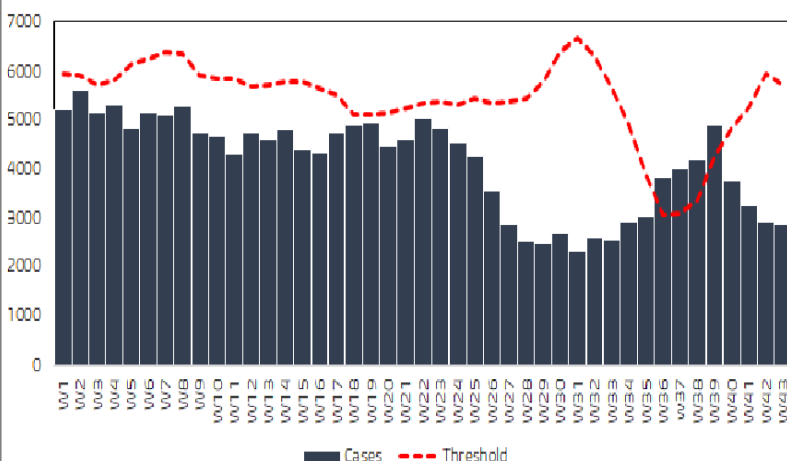
Trend of Non Bloody Diarrhea cases in Rwanda 2022
(Wk1 - Wk43)



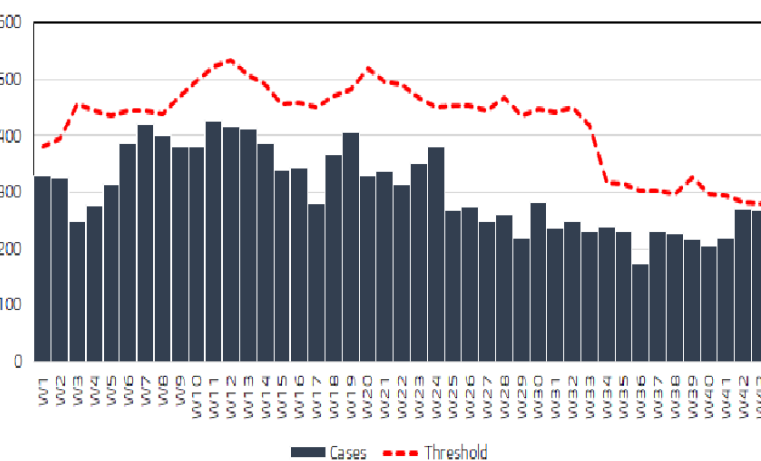
Trend of Flu syndrome cases in Rwanda 2022
(Wk1 - Wk43)



Trend of Malaria cases in Rwanda 2022
(Wk1 - Wk43)



Trend of Severe pneumonia cases in Rwanda 2022
(Wk1 - Wk43)



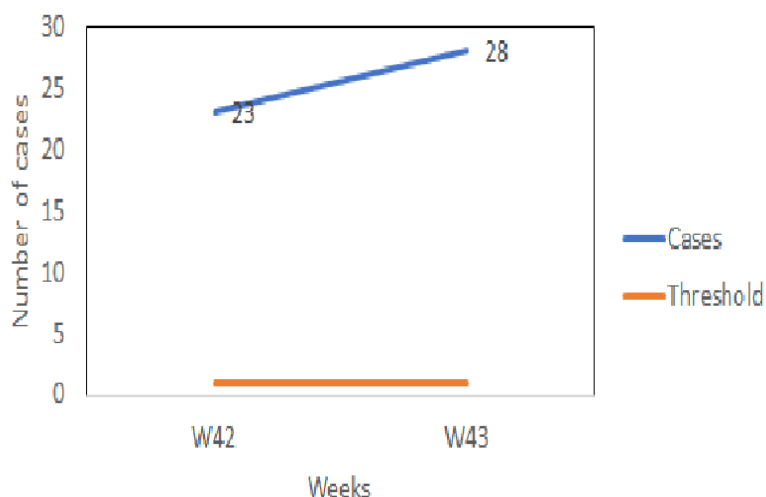
IDSR WEEKLY REPORTABLE DISEASES - 2022

Covid19 confirmed cases:
Wk 42-43:51
Wk 43:28 cases

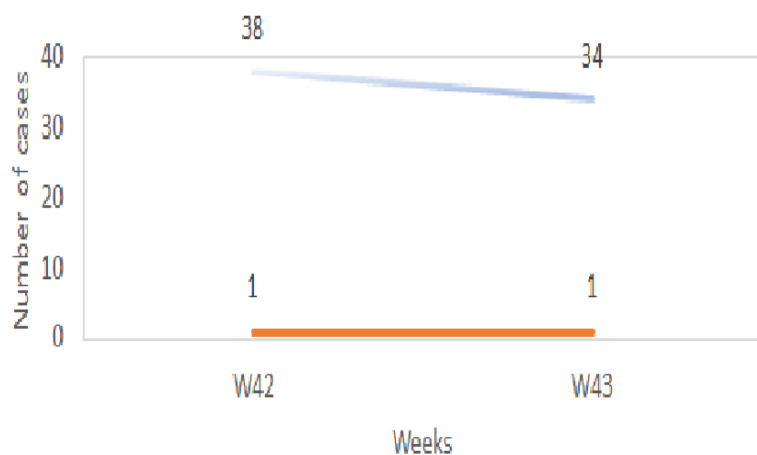
Rabies exposure (Dog or
other mamals bite) cases:
Wk 42-43: 72
Wk 43: 34 cases

Other weekly reportable
diseases:
Brucellosis, Tyrpanosomiasis
no case

**Covid19 confirmed cases in Rwanda 2022
(Wk 42-43)**



**Rabies exposure cases in Rwanda 2022
(Wk 42-43)**



From week 42, IDSR weekly report form revised and adapted on technical guideline 3rd edition was adapted also in DHIS-2, therefore many changes occurred.

In week 43, for 8 weekly reportable diseases, data analysis showed that 2 weekly reportable disease has crossed the threshold on National level: Covid19 that showed an increase in week 43, compared with week 42 and dog bite crossed also the threshold; a further investigation was needed.

There was no case for two new diseases: Brucellosis and Trypanosomiasis.

IDSR IMMEDIATE REPORTABLE DISEASES – Wk43

DH	HF	Bacterial Meningitis	Bloody Diarrhea (Shigellosis)	Measles	Typhoid Fever
Gatonde	Busengo CS	0	0	2	0
Kinihira	Buyoga CS	0	1	0	0
Byumba	Byumba CS	0	0	1	0
Nyarugenge	CHK(CHUK) HNR	1	0	0	0
Kigeme	Cyanika (nyamagabe) CS	0	1	0	0
Kibungo	Gasetza CS	0	1	0	0
Kabgayi	Gitarama CS	0	1	0	0
Nyanza	Hanika I (NYANZA) CS	0	1	0	0
Masaka	Kabuga (kicukiro) CS	0	0	1	0
Remera Rukoma	Karama (Kamonyi) CS	0	2	0	0
Kibogora	Kibingo (nyamasheke) CS	0	0	2	0
Kigeme	Kigeme DH	0	1	0	0
Murunda	Murunda CS	0	2	0	0
Kaduha	Mushubi CS	0	1	0	0
Nyarugenge	Mwendo (nyarugenge) CS	0	0	2	0
Ngarama	Ngarama DH	0	0	0	1
Nyanza	Nyabinyenga CS	0	1	0	0
Gahini	Nyakabungo CS	0	2	0	0
Kigeme	Nyamagabe CS	0	0	2	0
Masaka	Nyarugunga CS	0	0	1	0
Ruli	Rwankuba CS	0	0	3	0
Kibungo	Zaza CS	0	1	0	0
	Total	1	15	14	1

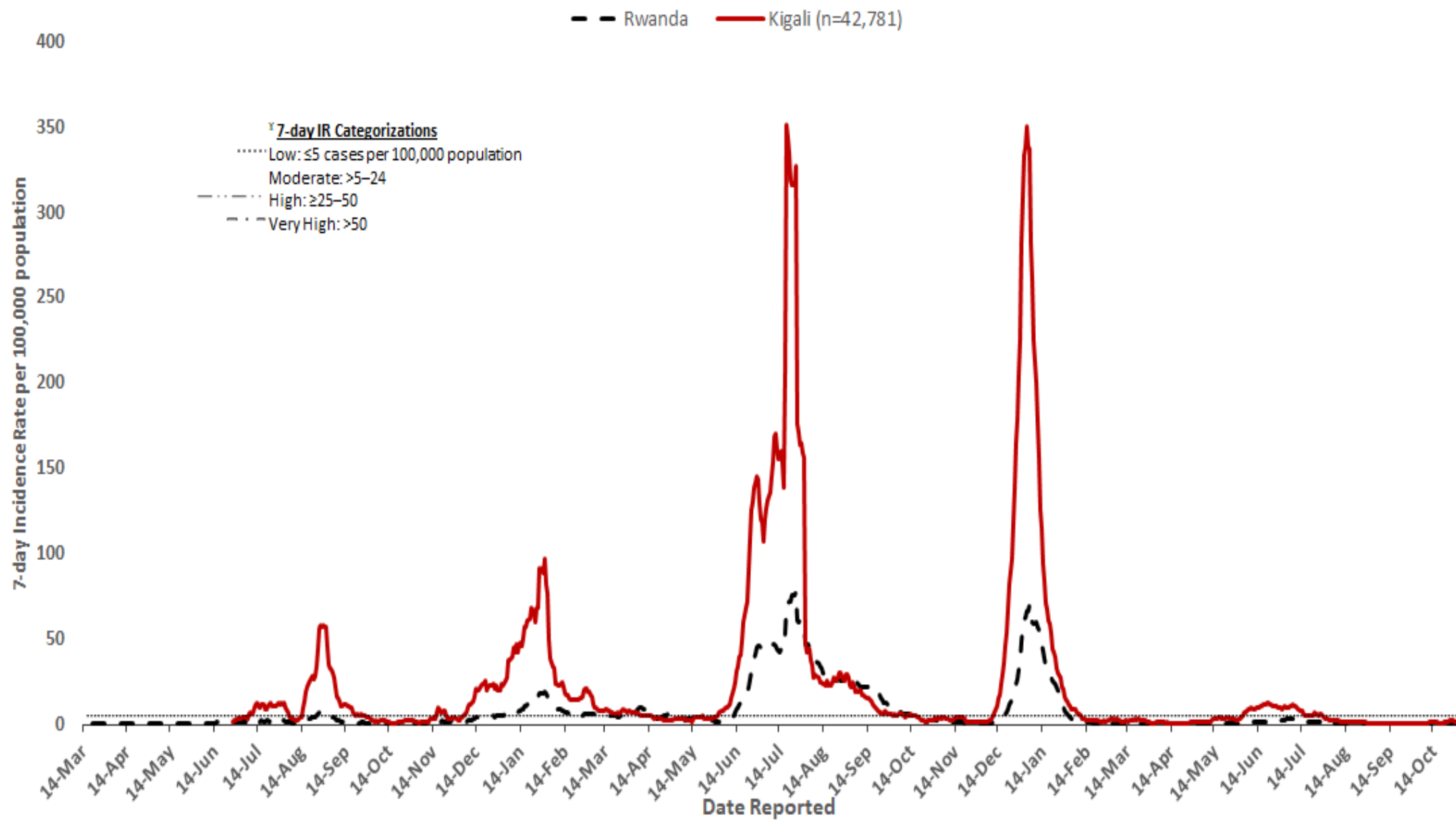
Alerts

During the week 43, the reported immediate diseases did not cross the thresholds, as well as all cases were suspected, while the thresholds were confirmed cases for every disease.

Observation: During the week 43, the reported IDSR immediate reportable diseases were Bacterial Meningitis, Bloody diarrhea, Measles and Typhoid fever.

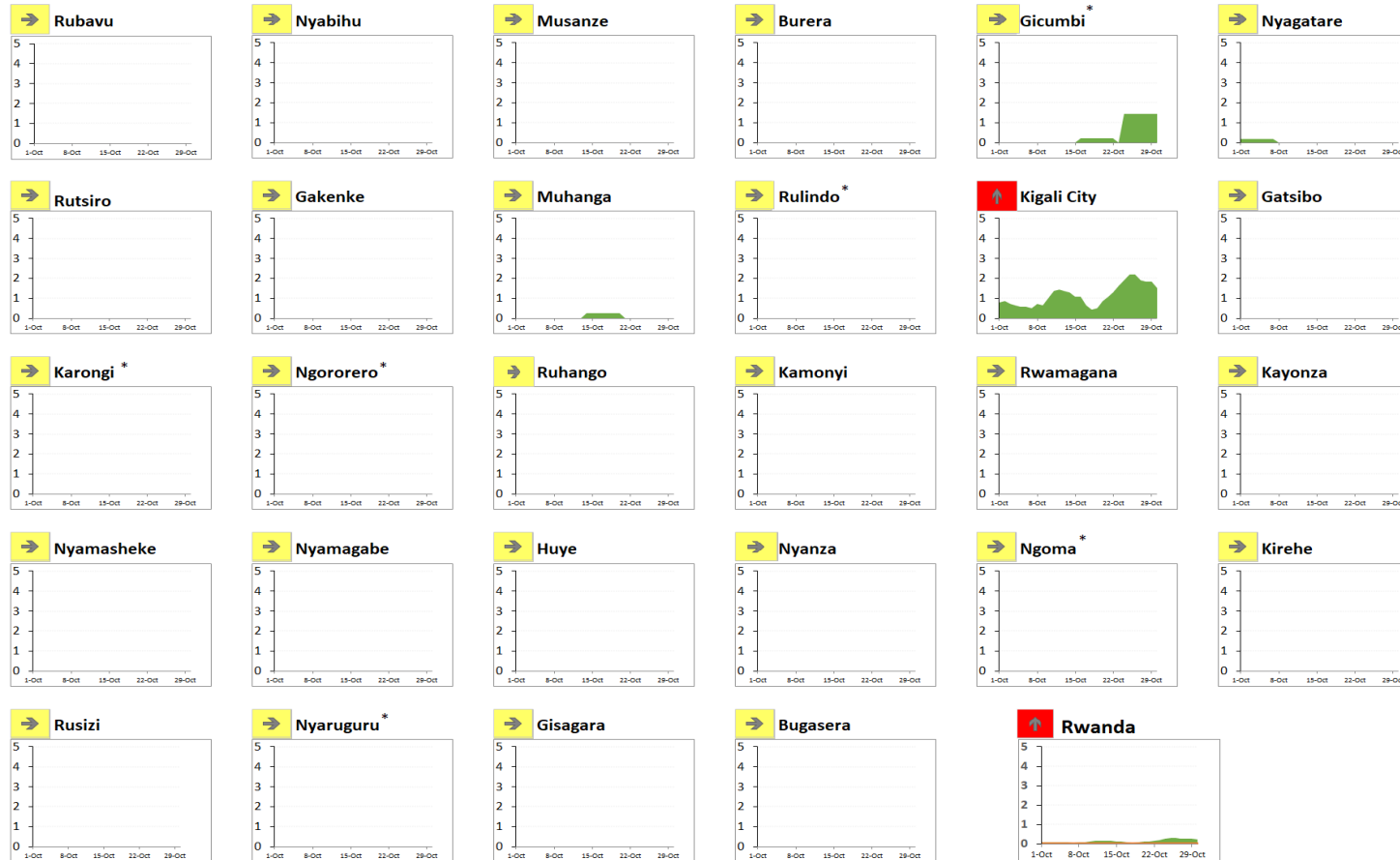
TREND OF 7-DAY INCIDENCE RATE OF COVID-19

COVID-19 Incidence Rate (IR) in Kigali City and Rwanda, March 14, 2020–October 30, 2022



TREND OF INCIDENCE RATE OF COVID-19 BY DISTRICTS

COVID-19 Cumulative 7-day (October 24–October 30) Incidence Rate (IR) and Trend (week-to-week % change) in Rwanda, October 01–October 30 (30 days), 2022



	Distribution of Districts	
Incidence rate in the last 7 days per 100,000	No.	%
Low: ≤5 cases	30	100%
Moderate: 5–24 cases	0	0%
High: ≥25–50 cases	0	0%
Very High: ≥50 cases	0	0%
Percentage change in cases in last 7 days vs previous 7 days		
Decrease: ≤ -10% change	↓	5 17%
Stable: > -10% change and <10% change	→	25 83%
Increase: ≥10% change	↑	0 0%

Observation: During the week 43, The overall incidence rate of Rwanda was 0.2 case per 100,000 population (it was the same with week 42: 0.2 cases per 100,000 population). All districts of Rwanda presented a very low incidence rate (IR below 5 cases). 27 districts showed a stable incidence rate for this week compared to previous week while 3 districts had a decreased incidence rate in this week compared to the previous week.

UPDATE ON EBOLA VIRUS DISEASE

Ebola virus disease in Uganda-Mubende district

1. Key highlights

On 20th September 2022, the Ministry of Health declared an outbreak of Sudan ebolavirus (EVD) after a case managed at Mubende Regional Referral Hospital (MRRH) in Mubende district was confirmed through testing at the Uganda Virus Research Institute (UVRI). This follows investigations by the National Rapid Response Team of suspicious deaths that had occurred in the district earlier in the month. This is the first time in more than a decade that Uganda reports an outbreak of Sudan ebolavirus.

- Two new EVD confirmed and no new deaths in the past 24 hours.
- Contacts follow-up rate was 60%.
- CFR among confirmed is 09/43 (20.9%)
- Total of 10 healthcare workers infected, with 3 deaths.

Date update as of 30th October 2022

	District affected	Cases confirmed	Confirmed deaths& probable deaths	Recoveries
Total	7	129	37 & 21	43

2. Action to date in Uganda

The Ministry of Health, Districts and Partners in **Uganda** are implementing several outbreak control interventions in affected and surrounding districts to contain the disease spread.

3. Key strategies ongoing for Ebola Virus outbreak preparedness in Rwanda

Key strategies in Rwanda

- Activate all command post in all districts
- Temperature screening in all POEs
- Map all people upon entry coming from Mubende, Kyegegwa Kagadi, Bunyangabu, Kassanda, Wakiso and Kampala regions to be quarantined for 21 days
- Community screening for people with symptoms by CHWs
- Awareness to both community and health care workers
- Investigate and follow up of cases with unexplained fever who consulted health facilities

SUMMARY OF REPORTED DEATHS THROUGH e-IDSR (Wk 43)

During Week 43, there was 1 death due to Malaria in Kibagabaga DH Kayanga HC, 1 Maternal death occurred in CHUB, 26 perinatal deaths: 5 in Kirehe DH, 4 Rwinkwavu DH, 4 Gisenyi DH, 3 CHUB, 3 Kibuye RH, 2 in Nyanza DH, 1 in each of these hospitals: Gahini, Kacyiru, Kinyihira, Kiziguro, 1 in Mahama HC and 14 under five deaths occurred in different Hospitals: 3 in Rwinkwavu, 2 Kibuye RH, 1 for each of these hospitals:

Gahini, Kinyihira, Kiziguro and Nyanza. The death audit should be conducted to determine the cause of those deaths and elaborate recommendations for reducing those which should be preventable.

HEALTH FACILITIES WITH NO REPORTS RECEIVED IN e-IDSR FOR Wk 43

Hospital name	Health facilities name
Butaro Sub District	Ntaruka (kinoni Burera) CS
Butaro Sub District	Ruhunde CS
Gatonde Sub District	Gatonde CS
Gatonde Sub District	Gatonde DH
Gisenyi Sub District	Bugeshi CS
Gisenyi Sub District	Byahi (rubavu) CS
Gisenyi Sub District	Kigufi CS
Kabaya Sub District	Gashonyi CS
Kabgayi Sub District	Gikomero (Kabgayi) CS
Kabaya Sub District	Sovu (Ngororero) CS
Kabgayi Sub District	Gikomero (Kabgayi) CS
Kabutare Sub District	Mbazi CS
Kabutare Sub District	Mukura (Huye) CS
Kabutare Sub District	Sovu (Huye) CS
Kibagabaga Sub District	Caraes Ndera Hnr
Kibagabaga Sub District	Kabuye CS
King Faisal Hospital HNR	King Faisal Hospital HNR
Kibungo Sub District	Gituku CS
Kibungo Sub District	Nyange CS
Kibuye Sub District	Karongi (gisunzu) Police CS
Kigeme Sub District	Kigeme Refugee Camp HC
Kigeme Sub District	Nyarusiza CS
Munini Sub District	Ngoma CS
Nyabikenke Sub District	Gitega (kibangu) CS
Nyabikenke Sub District	Nyabinoni CS
Rwanda Military Hospital	Rwanda Military Hospital
Nyagatare Sub District	Ntoma CS
Nyagatare Sub District	Rwempasha CS
Nyanza Sub District	Busoro CS
Nyanza Sub District	Cyaratsi CS
Nyanza Sub District	Ntyazo CS
Nyanza Sub District	Nyamiyaga (Nyanza) CS
Nyanza Sub District	Nyamure CS
Nyanza Sub District	Nyanza Prison
Nyanza Sub District	Nyarusange (nyanza) CS
Ruhengeri Sub District	Busogo CS
Ruhengeri Sub District	Gashaki CS
Ruhengeri Sub District	Gasiza (musanze) CS
Ruhengeri Sub District	Kabere CS
Ruhengeri Sub District	Karwasa CS
Ruhengeri Sub District	Murandi CS
Ruhengeri Sub District	Musanze CS
Ruhengeri Sub District	Musanze Prison
Ruhengeri Sub District	Nyakinama CS
Ruhengeri Sub District	Ruhengeri RH
Ruhengeri Sub District	Rwaza CS
Ruhengeri Sub District	Shingiro CS
Ruli Sub District	Coko (ruli) CS
Ruli Sub District	Muhondo (gakenke) CS
Ruli Sub District	Muyongwe CS
Rutongo Sub District	Kiyanza CS
Rutongo Sub District	Rulindo CS
Rwamagana Sub District	Gahengeri CS
Rwamagana Sub District	Musha (rwamagana) CS
Rwamagana Sub District	Nzige CS
Rwamagana Sub District	Rwamagana Prison
Rwinkwavu Sub District	Kabarondo (kayanza) CS