

# WEEKLY EPIDEMIOLOGICAL BULLETIN

**Week 40: 03-09 Oct 2022**

Released on: 13<sup>th</sup> Oct 2022

## **PUBLIC HEALTH SURVEILLANCE & EMERGENCY PREPAREDNESS AND RESPONSE DIVISION**

### Editorial message

Effective and efficient Integrated Disease Surveillance and Response (IDSR) systems contribute to the reduction of morbidity, disability and mortality from disease outbreaks and health emergencies.

This weekly bulletin presents the epidemiological status of the diseases under surveillance in Rwanda. These data are useful to trigger a rapid response for rapid impact, actions and results oriented, a proactive preparedness, risk mitigation and prevention, intelligence, real-time information, and communication for decision making.

### Editorial board

Surveillance Unit, Outbreak Preparedness and Response Unit, Food and Waterborne Diseases Unit, Avian Influenza and Highly Pathogenic Diseases Unit, One health Unit

### Contact information

Dr Edson Rwagasore, DM-PHS&EPR Division  
Tel: +250788599240  
Email: [edson.rwagasore@rbc.gov.rw](mailto:edson.rwagasore@rbc.gov.rw)  
Toll free number: 114

### Overview

This Weekly Bulletin focuses on diseases under surveillance in Rwanda. This week's articles cover:

- ☞ Reports completeness
- ☞ Reports timeliness
- ☞ Trend of weekly reportable diseases
- ☞ Distribution of Immediate reportable diseases
- ☞ COVID-19 situation
- ☞ Reported deaths
- ☞ Health facilities with no reports

### Acknowledgement

The authors would like to thank Health facilities of Rwanda for providing the data used in this bulletin.

# TREND OF IDSR REPORTS COMPLETENESS

(Previous 10 weeks:Wk31 – Wk40)

OVERALL

RWANDA

Completeness – Wk 40: 95%



**Completeness** is calculated as the proportion of received reports over expected reports by week in a catchment area

**Observation:** During this week 39, the overall IDSR reports completeness was 95%. However, Rwanda Military Hospital indicated the low level of completeness (Below 60 %) as well as it did not report, while Nyanza DH and Rwamagana PH had the low completeness(between 60 and 79%)We recommend it to conduct the root cause analysis and set measures that will facilitate to report all required reports.

# TREND OF IDSR REPORTS TIMELINESS

(Previous 10 weeks: Wk31 – Wk40)

## OVERALL

## RWANDA

Timeliness – Wk 40: 93%



**Timeliness** is calculated as the proportion of received reports on time over the expected reports by week in a catchment area

**Observation:** During this week 40, the overall IDSR reports timeliness was 93%. The following catchment area indicated the low level of timeliness (Between 60 and 79%): **Kabutare DH** and **Nyanza DH**, while **Rwamagana PH** had below 60%, and **Rwanda Military Hospital** did not report. We recommend them to conduct the root cause analysis and set measures that will facilitate them to report all required reports on time (Monday of each week 12 pm).

# IDSR WEEKLY REPORTABLE DISEASES - 2022

## Non-Bloody Diarrhea cases

Wk01 – Wk40: 202,535

Wk40: 5,177

## Flu syndrome cases

Wk01 – Wk40: 653,447

Wk40: 12,288

## Malaria cases

Wk01 – Wk40: 168,576

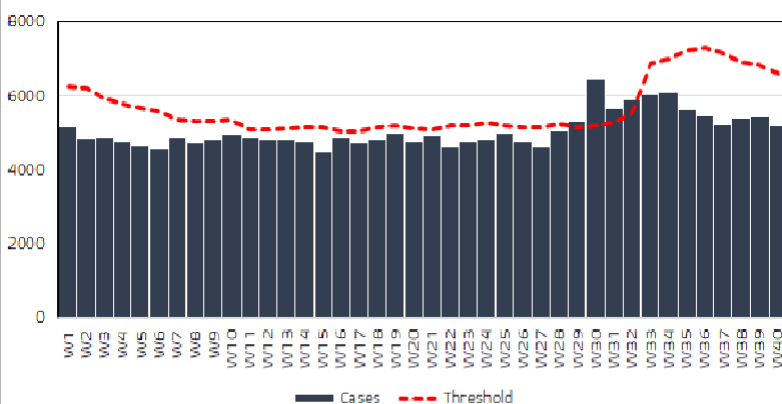
Wk40: 3,768

## Severe Pneumonia cases

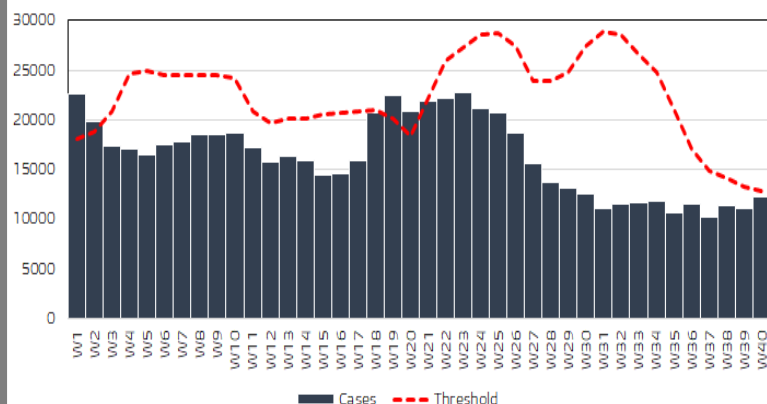
Wk01 – Wk40: 12,353

Wk40: 206

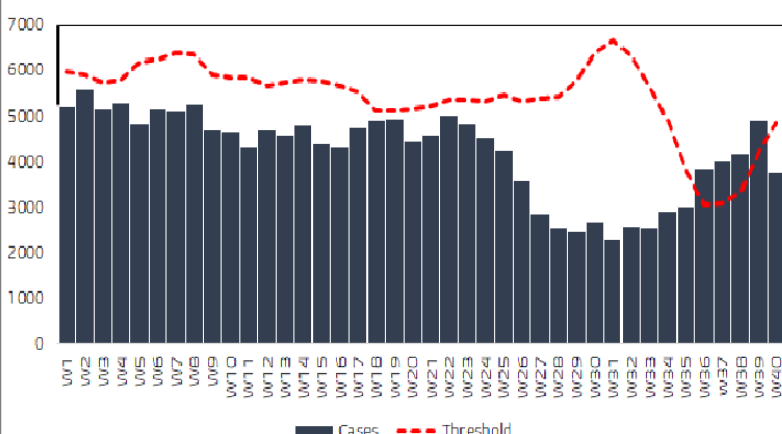
Trend of Non Bloody Diarrhea cases in Rwanda 2022  
(Wk1 - Wk41)



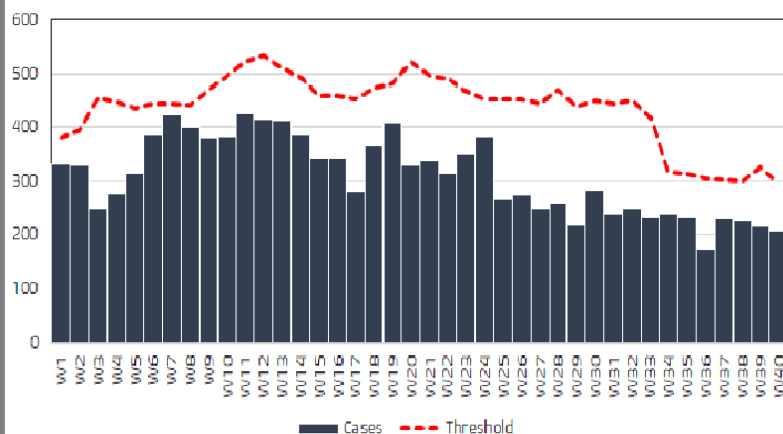
Trend of Non Flu syndrome cases in Rwanda 2022  
(Wk1 - Wk40)



Trend of Malaria cases in Rwanda 2022  
(Wk1 - Wk40)



Trend of Severe pneumonia cases in Rwanda 2022  
(Wk1 - Wk40)



Non bloody diarrhea, Malaria, Flu syndrome and Severe pneumonia were reported through e-IDSR by health facilities on a weekly basis.

During that week 40, the data analysis showed that no disease had crossed the threshold on National level.



# IDSR IMMEDIATE REPORTABLE DISEASES – Wk40

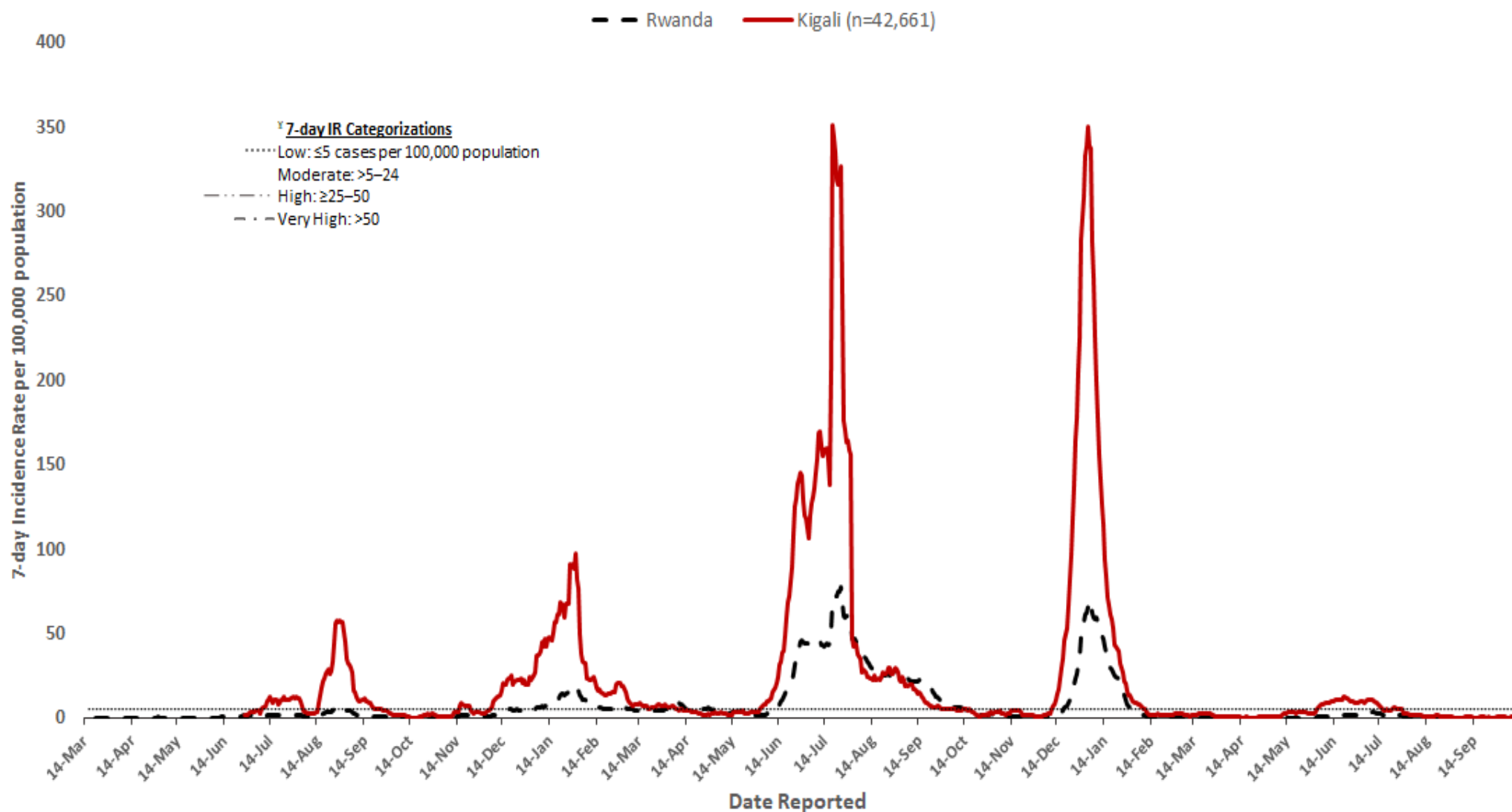
HF	Acute Flaccid Paralysis	Bloody Diarrhea (Shigellosis)	Chicken Pox - Varicella	Measles	Mumps	Rabies
Bigugu CS	0	0	0	0	0	1
Biryogo CS	0	1	0	0	0	0
Bubangu CS	0	0	0	1	0	0
Busengo CS	0	0	0	0	1	0
Crete Congo Nil CS	1	0	0	1	0	0
Cyanika (nyamagabe) CS	0	2	0	0	0	0
Gakoma CS	0	0	2	0	0	0
Gikonko (Gisagara) CS	0	0	1	0	0	0
Gisakura CS	0	0	0	1	0	0
Gitarama CS	0	0	0	0	0	1
Kabaya DH	0	1	0	0	0	0
Karambo (gakenke) CS	0	1	0	0	0	0
Karambo (rubavu) CS	0	0	0	0	1	0
Kibogora CS	0	0	0	0	0	1
Kibogora DH	0	0	0	0	0	1
Kibondo CS	0	1	0	0	0	0
Kinihira PH	0	1	0	0	0	0
Kinoni CS	0	0	1	0	0	0
Mahama Refugee Camp HC	0	0	16	0	0	0
Matyazo CS	0	0	1	0	0	0
Mibilizi CS	0	0	1	0	0	0
Mibilizi DH	0	0	0	0	0	2
Mimuri CS	0	0	0	1	0	0
Miyove CS	0	0	0	0	1	0
Mugombwa Refugee Camp	0	0	3	0	0	0
Muko CS	0	0	4	0	0	0
Mukono CS	0	1	0	0	1	0
Musenyi (gicumbi) CS	0	0	1	0	0	0
Mushishiro CS	0	0	0	1	0	0
Mweya CS	0	1	0	0	0	0
Nyagatare DH	0	0	0	0	0	4
Nzige CS	0	0	0	2	0	0
Remera-mbogo CS	0	0	0	1	0	0
Rilima CS	0	3	1	0	0	0
Rugendabali CS	0	1	0	0	0	0
Rugerero CS	0	0	0	0	0	0
Ruhango (Gisozi) PS	0	0	0	0	0	0
Ruhango CS	0	1	1	0	0	0
Ruhuha CS	0	0	0	1	0	0
Rukoma Sake CS	0	0	4	0	0	0
Rusizi Prison	0	1	0	0	0	0
Rutonde CS	0	0	0	1	0	0
Sangaza CS	0	0	2	0	0	0
Shaba (nyamagabe) CS	0	0	1	0	0	0
Shagasha CS	0	0	1	0	0	0
Shyogwe CS	0	0	1	1	1	0
Zaza CS	0	0	5	0	0	0
<b>Total</b>	<b>1</b>	<b>15</b>	<b>46</b>	<b>11</b>	<b>5</b>	<b>10</b>

District	Diseases	Case	Alert threshold	Recommendations
Kirehe	Chicken pox	16	10 cases	Verify and investigate the cases
Rutsiro	AFP	1	1 suspected case	Verify and investigate the cases

**Observation:** During the week 40, the reported IDSR immediate reportable diseases were AFP, Chicken pox, Mumps, Rabies, Bloody diarrhea and Measles

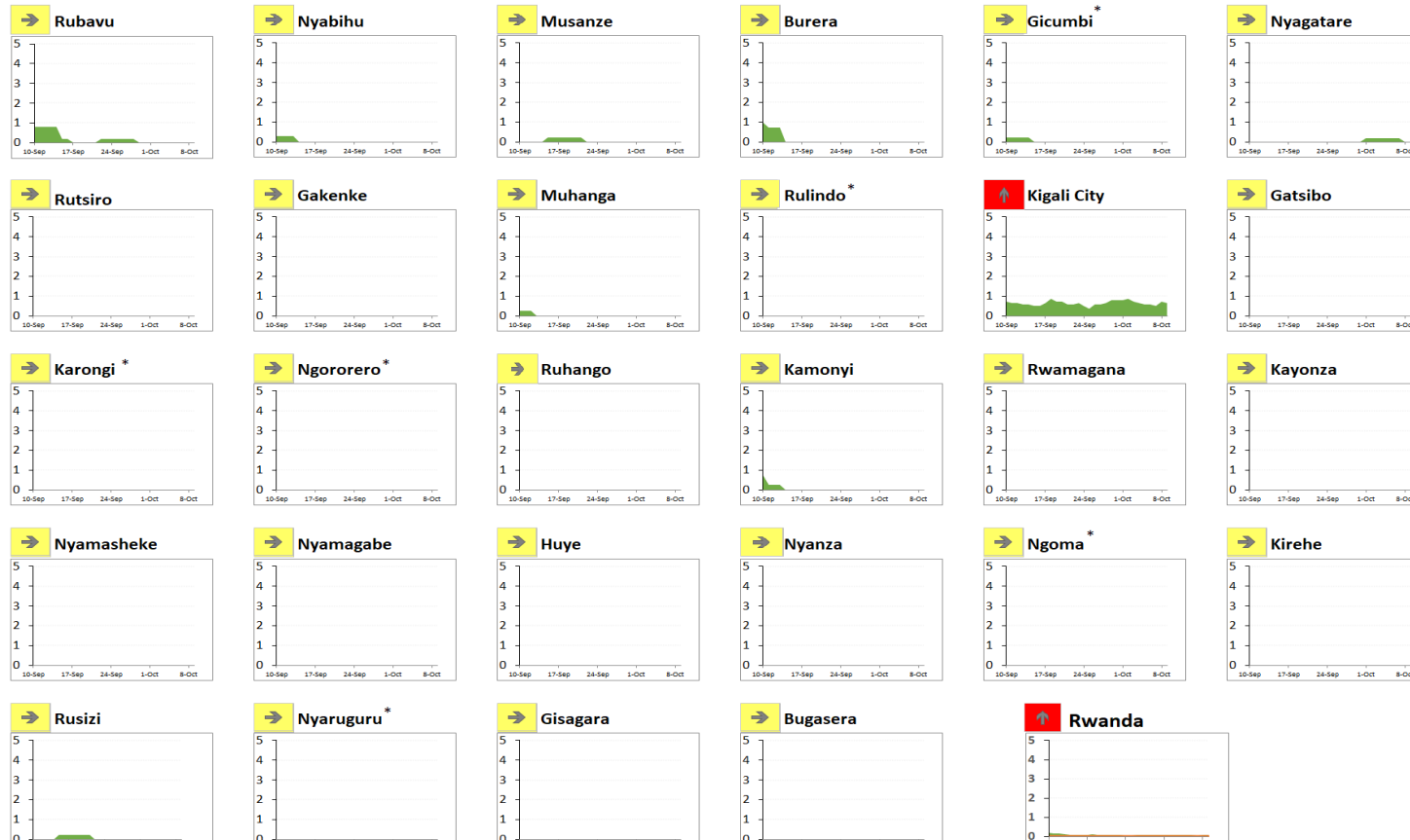
# TREND OF 7-DAY INCIDENCE RATE OF COVID-19

COVID-19 Incidence Rate (IR) in Kigali City and Rwanda, March 14, 2020–October 09, 2022



# TREND OF INCIDENCE RATE OF COVID-19 BY DISTRICTS

COVID-19 Cumulative 7-day (October 03–October 09) Incidence Rate (IR) and Trend (week-to-week % change) in Rwanda, September 10–October 09 (30 days), 2022



	Distribution of Districts	
Incidence rate in the last 7 days per 100,000	No.	%
Low: $\leq 5$ cases	30	100%
Moderate: 5–24 cases	0	0%
High: $\geq 25$ –50 cases	0	0%
Very High: $> 50$ cases	0	0%
Percentage change in cases in last 7 days vs previous 7 days		
Decrease: $\leq -10\%$ change	1	3%
Stable: $> -10\%$ change and $< 10\%$ change	26	87%
Increase:		

**Observation:** During the week 40, The overall incidence rate of Rwanda was 0.2 case per 100,000 population (Increased from 0.05 cases per 100,000 population in week 39). All districts of Rwanda presented a very low incidence rate (IR below 5 cases). 27 districts showed a stable incidence rate for this week compared to previous week while 3 districts had a increased incidence rate in this week compared to the previous week.

# UPDATE ON EBOLA VIRUS DISEASE

## Ebola virus disease in Uganda-Mubende district

### 1. Key highlights

On 20th September 2022, the Ministry of Health declared an outbreak of Sudan ebolavirus (EVD) after a case managed at Mubende Regional Referral Hospital (MRRH) in Mubende district was confirmed through testing at the Uganda Virus Research Institute (UVRI). This follows investigations by the National Rapid Response Team of suspicious deaths that had occurred in the district earlier in the month. This is the first time in more than a decade that Uganda reports an outbreak of Sudan ebolavirus.

- Two new EVD confirmed and no new deaths in the past 24 hours.
- Contacts follow-up rate was 60%.
- CFR among confirmed is 09/43 (20.9%)
- Total of 10 healthcare workers infected, with 3 deaths.

Date update as of 5<sup>th</sup> October 2022

	District affected	Cases confirmed	Probable cases	Deaths
Total	5	44	20	10

### 2. Action to date in Uganda

The Ministry of Health, Districts and Partners in **Uganda** are implementing several outbreak control interventions in Mubende and her surrounding districts to contain the disease spread.

### 3. Key strategies ongoing for Ebola Virus outbreak preparedness in Rwanda

#### Key strategies in Rwanda

- Activate all command post in all districts
- Temperature screening in all POEs
- Map all people upon entry coming from Mubende, Kyegegwa, Kassanda, Kagadi and Bunyangabu regions to be quarantined for 21 days
- Community screening for people with symptoms by CHWs
- Awareness to both community and health care workers
- Investigate and follow up of cases with unexplained fever who consulted health facilities



# SUMMARY OF REPORTED DEATHS THROUGH e-IDSr (Wk 40)

During Week 40, there were 4 deaths due to severe pneumonia reported, 2 from Kibungo RH, 1 from Murunda DH and 1 from Nyagatare DH.

## HEALTH FACILITIES WITH NO REPORTS RECEIVED IN e-IDSr FOR Wk 40

Province	District	Hospital	Health Facility
East	Bugesera	Nyamata DH	Gakurazo CS
East	Bugesera	Nyamata	Ntarama CS
East	Rwamagana	Rwamagana PH	Munyiginya CS
East	Rwamagana	Rwamagana PH	Murambi (rwamagana) CS
East	Rwamagana	Rwamagana PH	Gishari(Police) CS
East	Rwamagana	Rwamagana PH	Nyagasambu CS
East	Rwamagana	Rwamagana PH	Nyakaliro CS
East	Rwamagana	Rwamagana PH	Rubona (rwamagana) CS
North	Gicumbi	Byumba DH	Camp Gihembe CS
North	Rulindo	Ruli	Coko (ruli) CS
North	Rulindo	Kinihira	Tare CS
North	Rulindo	Rutongo	Murambi CS
North	Burera	Butaro	Kinyababa CS
North	Ruhengeri	Ruhengeri	Gasiza (musanze) CS
Kigali City	Kicukiro	Rwanda Military Hospital	Rwanda Military Hospital
South	Nyanza	Nyanza DH	Busoro CS
South	Nyanza	Nyanza DH	Cyaratsi CS
South	Nyanza	Nyanza DH	Ntyazo CS
South	Nyanza	Nyanza DH	Nyarusange (nyanza) CS
South	Muhanga	Kabgayi DH	Gikomero (Kabgayi) CS
South	Ruhanga	Gitwe DH	Gitwe CS
South	Huye	Kabutare DH	Huye Prison
South	Huye	Kabutare DH	Mbazi CS
South	Nyanza	Nyanza DH	Nyarusange (nyanza) CS