

WEEKLY EPIDEMIOLOGICAL BULLETIN

Week 36: 05 Sept - 11 Sept 2022

Released on: 21st Sept 2022

PUBLIC HEALTH SURVEILLANCE & EMERGENCY PREPAREDNESS AND RESPONSE DIVISION

Editorial message

Effective and efficient Integrated Disease Surveillance and Response (IDSR) systems contribute to the reduction of morbidity, disability and mortality from disease outbreaks and health emergencies.

This weekly bulletin presents the epidemiological status of the diseases under surveillance in Rwanda. These data are useful to trigger a rapid response for rapid impact, actions and results oriented, a proactive preparedness, risk mitigation and prevention, intelligence, real-time information, and communication for decision making.

Editorial board

Surveillance Unit, Outbreak Preparedness and Response Unit, Food and Waterborne Diseases Unit, Avian Influenza and Highly Pathogenic Diseases Unit, One health Unit

Contact information

Dr Edson Rwagasore, DM-PHS&EPR Division
Tel: +250788599240
Email: edson.rwagasore@rbc.gov.rw
Toll free number: 114

Overview

This Weekly Bulletin focuses on diseases under surveillance in Rwanda. This week's articles cover:

- ☞ Reports completeness
- ☞ Reports timeliness
- ☞ Trend of weekly reportable diseases
- ☞ Distribution of Immediate reportable diseases
- ☞ COVID-19 situation
- ☞ Reported deaths
- ☞ Health facilities with no reports

Acknowledgement

The authors would like to thank Health facilities of Rwanda for providing the data used in this bulletin.

TREND OF IDSR REPORTS COMPLETENESS

(Previous 10 weeks: Wk27 – Wk36)

OVERALL

RWANDA

Completeness – Wk 36: 93%



Completeness is calculated as the proportion of received reports over expected reports by week in a catchment area

Observation: During this week 36, the overall IDSR reports completeness was 93%. However, **Ruhango PH** catchment area indicated the low level of completeness (Between 60 and 79%) and the following catchment areas did not report: **Rwanda Military Hospital** and **Caraes Ndera**. We recommend them to conduct the root cause analysis and set measures that will facilitate them to report all required reports.

TREND OF IDSR REPORTS TIMELINESS

(Previous 10 weeks: Wk27 – Wk36)

OVERALL

RWANDA

Timeliness – Wk 36: 91%



Timeliness is calculated as the proportion of received reports on time over the expected reports by week in a catchment area

Observation: During this week 36, the overall IDSR reports timeliness was 91%. However, **Ruhango PH, Kabutare DH and Kabaya DH** catchment areas indicated the low level of completeness (Between 60 and 79%) and the following catchment areas did not report: **Rwanda Military Hospital and Caraes Ndera**. We recommend them to conduct the root cause analysis and set measures that will facilitate them to report all required reports on time (Monday of each week 12 pm).

IDSr WEEKLY REPORTABLE DISEASES - 2022

Non-Bloody Diarrhea cases

Wk01 – Wk36: 181,310

Wk36: 5,475

Flu syndrome cases

Wk01 – Wk36: 608,577

Wk36: 11,435

Malaria cases

Wk01 – Wk36: 151,710

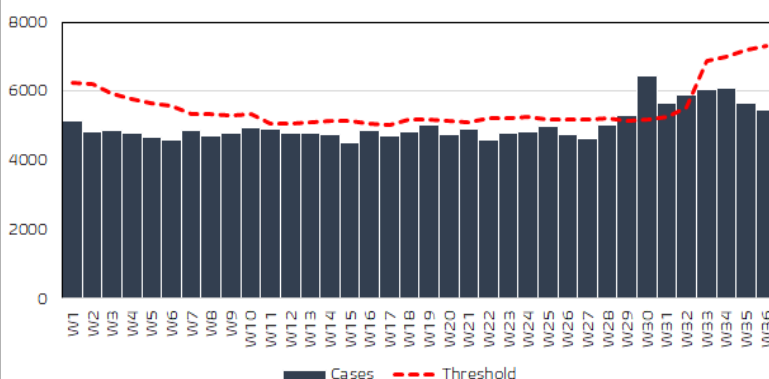
Wk36: 3,834

Severe Pneumonia cases

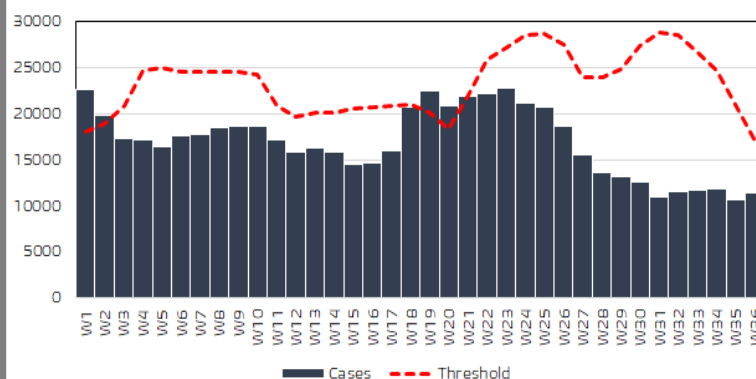
Wk01 – Wk36: 11,475

Wk36: 173

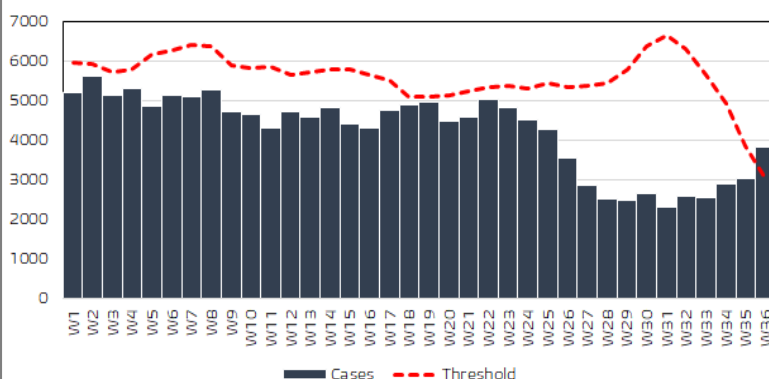
Trend of Non Bloody Diarrhea cases in Rwanda 2022
(Wk1 - Wk36)



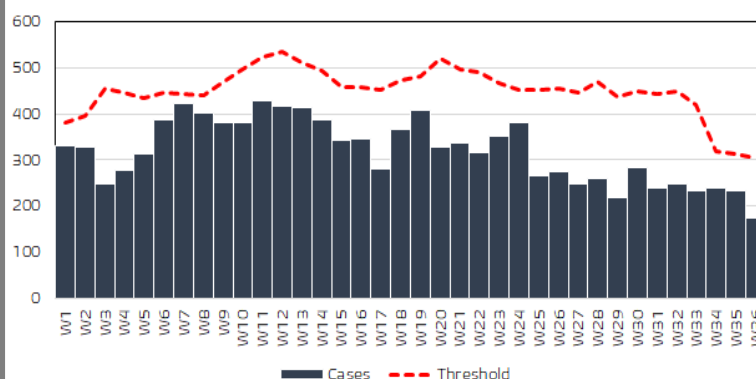
Trend of Non Flu syndrome cases in Rwanda 2022
(Wk1 - Wk36)



Trend of Malaria cases in Rwanda 2022
(Wk1 - Wk36)



Trend of Severe pneumonia cases in Rwanda 2022
(Wk1 - Wk36)



Non bloody diarrhea, Malaria, Flu syndrome and Severe pneumonia are reported through e-IDSr by health facilities on a weekly basis.

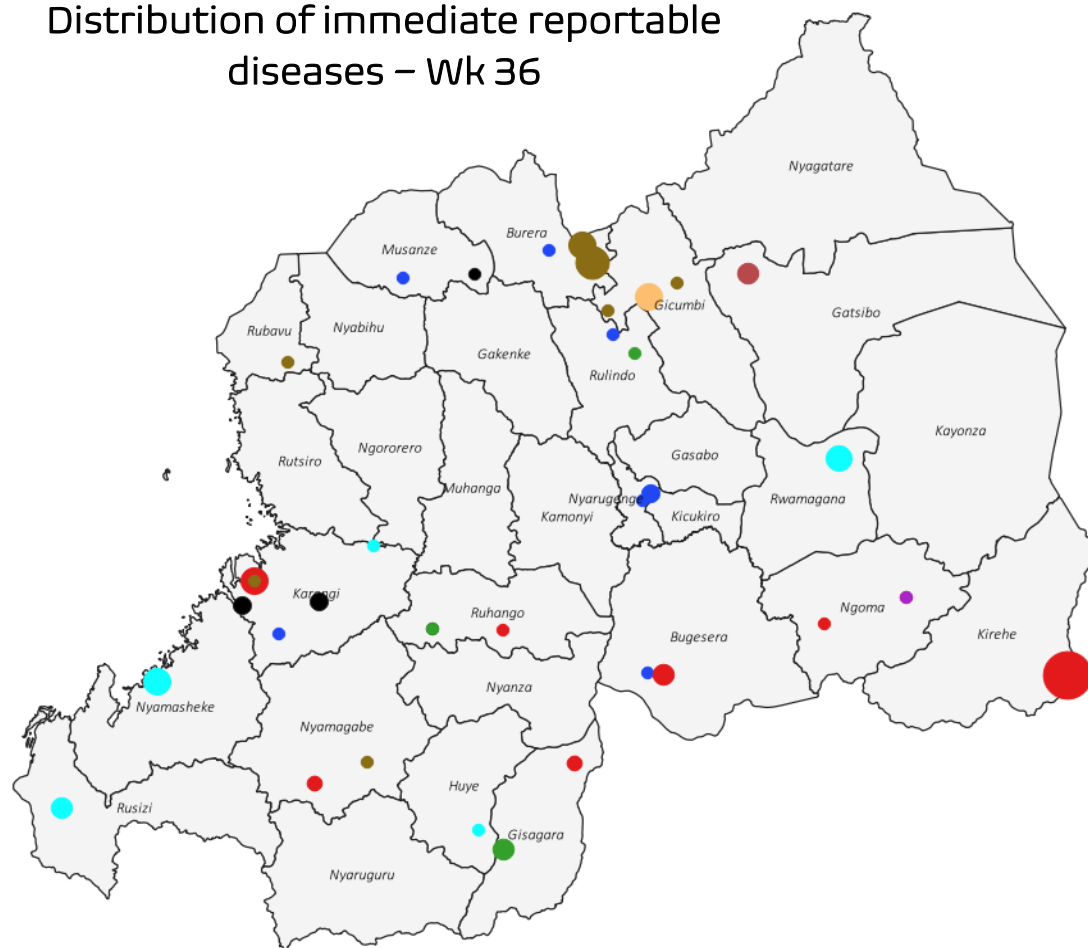
During this week of 36, the data analysis showed that only **Malaria** has crossed the threshold on National level. Considering the level of health facilities catchment area, the following health facilities have reached their threshold for Malaria:

- Remera Rukoma DH
- Kibagabaga DH
- Rutongo DH

Note: The investigation of the increase in number of cases among the above health facilities is ongoing

IDSR IMMEDIATE REPORTABLE DISEASES – Wk36

Distribution of immediate reportable diseases – Wk 36



IDSR Immediate reportable diseases by Health facilities

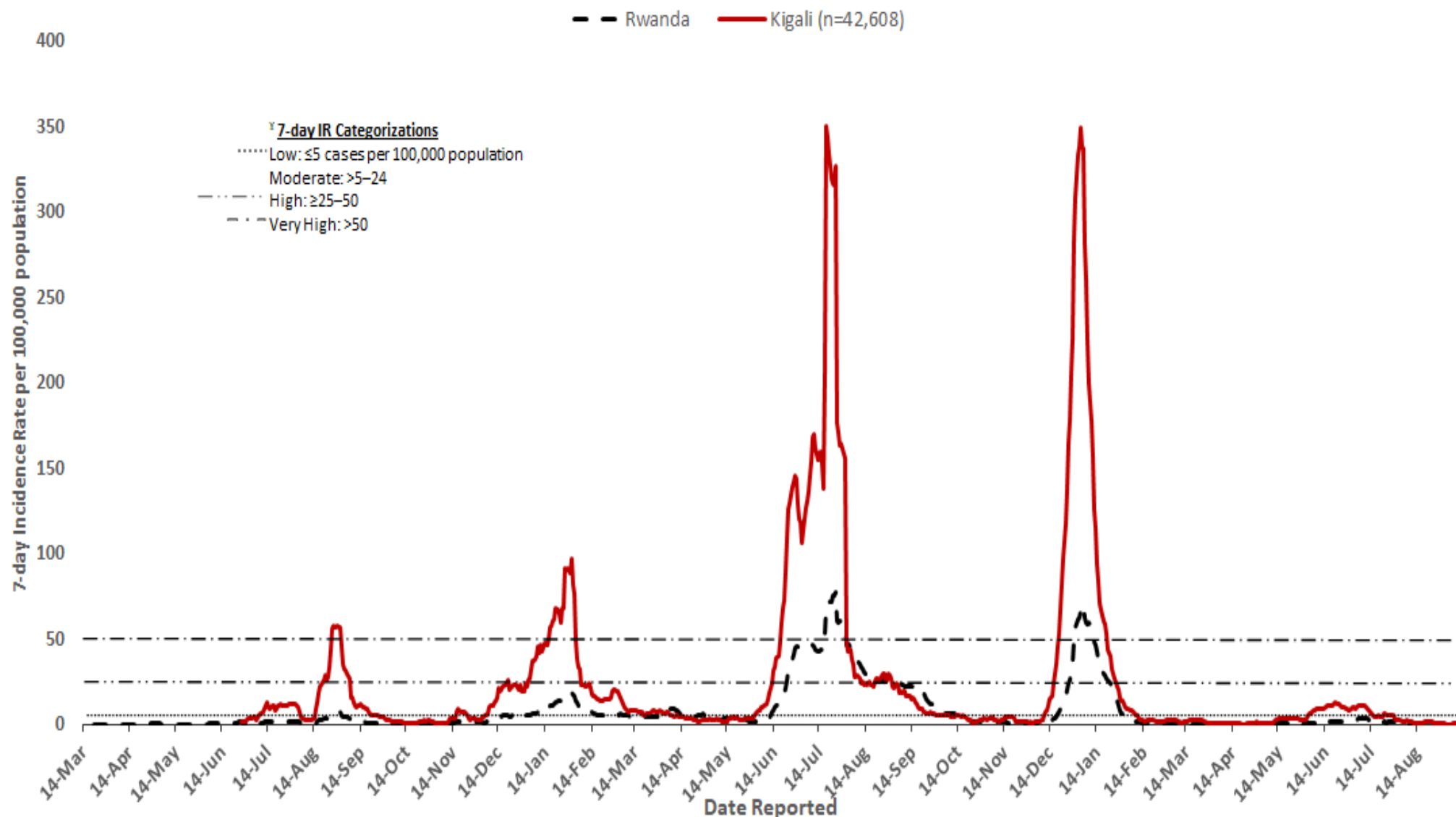
- Chicken Pox:** 67-Mahama Refugee Camp, 4-Mubuga HC, 3-Gikundamvura HC, 2-Gakoma HC, 2-Kitabi HC, 1-Kiubngo RH, 1-Ruhango HC, 1-Rukoma Sake HC
- Food poisoning:** 5-Byumba DH
- Mumps:** 11-Gatebe HC, 5-Kivuye HC, 1-Karambo HC, 1-Kigeme HC, 1-Miyove HC, 1-Mubuga HC, 1-Mukono HC
- Rabies:** 4-Ruhunda HC, 3-Kibogora DH, 2-Mibilizi DH, 1-CHUB, 1-Rufungo HC
- Bloody diarrhea:** 2-Biryogo HC, 1-Gakoma HC, 1-Gisovu HC, 1-Kabere HC, 1-Kinihira PH, 1-Ruhuha HC, 1-Rwerere HC, 1-Nyarugenge DH
- Typhoid fever:** 3-Ngarama DH
- Measles:** 3-Kibilizi HC, 1-Muyanza HC, 1-Karambi HC
- Meningococcal meningitis:** 1-Kibungo RH
- AFP:** 2-Mugonero DH, 2-Musango HC, 1-Murandi HC, 1-Karambi HC

ALERTS				
District	Disease	Cases	Alert threshold	Recommendations
Kirehe	Chickenpox	67	10 cases per week	Verify, investigate and report as soon as possible
Burera	Mumps	16	10 cases per week	Verify, investigate and report as soon as possible

Observation: During the week 36, the reported IDSR immediate reportable diseases were Chicken pox, Food poisoning, Mumps, Rabies, Bloody diarrhea, Typhoid fever, Measles, Meningococcal meningitis and AFP.

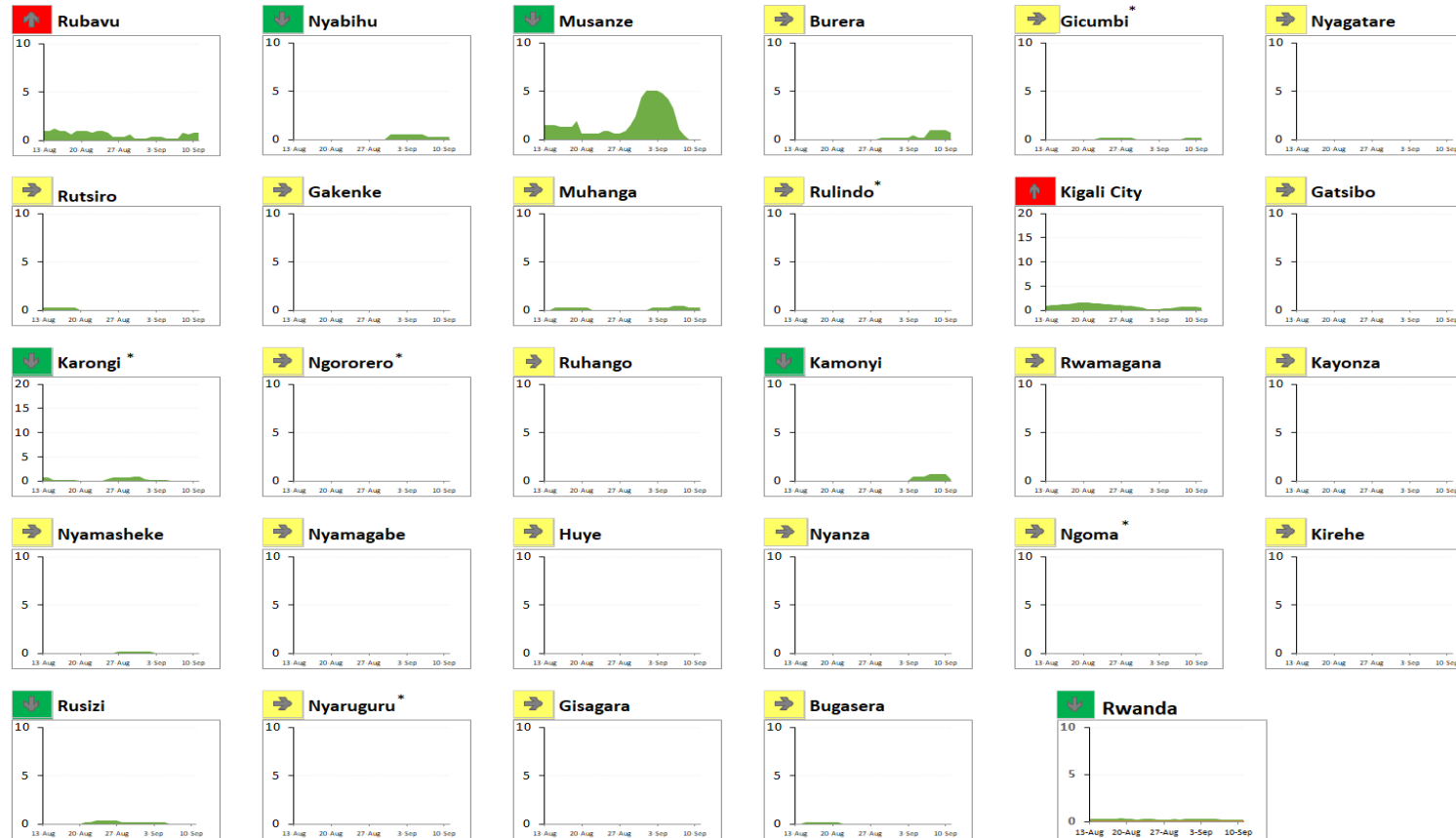
TREND OF 7-DAY INCIDENCE RATE OF COVID-19

COVID-19 Incidence Rate (IR) in Kigali City and Rwanda, March 14, 2020–September 11, 2022



TREND OF INCIDENCE RATE OF COVID-19 BY DISTRICTS

COVID-19 Cumulative 7-day (September 05–September 11) Incidence Rate (IR) and Trend (week-to-week % change) in Rwanda, August 13–September 11 (30 days), 2021



* Note: y-axis values are greater due to higher incidence rate peaks compared with other districts during the previous 30-days

		Distribution of Districts	
Incidence rate in the last 7 days per 100,000		No.	%
Low:			
≤5 cases		30	100%
Moderate:			
5–24 cases		0	0%
High:			
≥25–50 cases		0	0%
Very High:			
>50 cases		0	0%
Percentage change in cases in last 7 days vs previous 7 days			
Decrease:			
≤ -10% change	↓	5	17%
Stable:			
> -10% change and <10% change	→	21	70%
Increase:			
≥10% change	↑	4	13%

Observation: During the week 36, The overall incidence rate of Rwanda was 0.2 cases per 100,000 population. All districts of Rwanda presented a very low incidence rate (IR below 5 cases). 21 districts showed a stable incidence rate for this week compared to previous week while 5 districts had a decreased incidence rate in this week compared to the previous week. However, the incidence rate in **Rubavu District** and **Kigali city** increased by 100% and 80% respectively compared to Week 35

Note: An investigation on the increase of cases in Rubavu District and Kigali city is ongoing

SUMMARY OF REPORTED DEATHS THROUGH e-IDSr (Wk 36)

Death due to	Malaria	Severe pneumonia
Kigeme DH	1	
Kibungo RH		1
Gisenyi DH		1

During Week 36, there was 3 deaths reported: 1 Malaria death reported by Kigeme DH, 1 death of severe pneumonia reported by Kibungo RH and 1 death of severe pneumonia reported by Gisenyi DH.

HEALTH FACILITIES WITH NO REPORTS RECEIVED IN e-IDSr FOR Wk 36

Province	District	Hospital	Health Facility
East	Nyagatare District	Gatunda DH	Cyondo HC
East	Kayanza District	Gahini DH	Gahini DH
East	Ngoma District	Kibungo RH	Gasetza HC
Kigali City	Gasabo District	Caraes Ndera	Caraes Ndera Hnr
Kigali City	Kicukiro District	RMH	Rwanda Military Hospital
North	Gicumbi District	Byumba DH	Camp Gihembe CS
North	Gicumbi District	Byumba DH	Mukarange HC
North	Gicumbi District	Byumba DH	Nyamiyaga (Gicumbi) CS
South	Ruhango District	Ruhango PH	Mukoma HC
South	Ruhango District	Ruhango PH	Nyarurama HC
South	Nyanza District	Nyanza DH	Nyabinyenga HC
West	Ngororero District	Kabaya DH	Rubaya HC