



SUMMARY

I. COMPLETENESS AND TIMELINESS

- For Public Health Facilities Completeness: **93.1 %** Timeliness: **75.4 %**
- For Privates Health Facilities Completeness: **31.3 %** Timeliness: **18.4 %**
- **Overall Completeness: 80.3 %**
Timeliness: **63.6 %**

□ **Good performance (with 100% timeliness):** **Gakoma, Ruhango, Bushenge, Kibogora and Muhororo hospitals**

□ **Poor performance (timeliness between 50-80%):** **Remera Rukoma, Gahini, Ruli, Gitwe, Kiziguro, Rutongo, Kibuye, Kibagabaga, Nemba, Kirehe, Nyagatare, Butaro, Muhima, Kigeme, Rwamagana, Kaduha, Gisenyi, Ruhengeri, Rwinkwavu, Nyanza and Kirinda Hospitals**

□ **Very poor performance:** Timeliness less than 50%: **Masaka, Mu-gongerero and Kabutare hospitals**

II. Cases reported by Public and Private HFs:

- **Malaria:** 11,459 cases
- **Flu syndrome:** 12,570 cases
- **Non-bloody Diarrhoea:** 4,477 cases
- **Severe Pneumonia in children under five years:** 171 cases
- **Bloody diarrhoea:** 9 cases
- **Chicken pox:** 23 cases
- **Mumps:** 50 cases
- **AFP:** Two cases of AFP were notified one case each from Giheke HC of Gihundwe and Kansi HC of Kibilizi hospital
- **Food Poisoning:** Seven cases of Food poisoning were notified from Bushenge HC of Bushenge hospital

EPIDEMIC SURVEILLANCE AND RESPONSE WEEKLY REPORT

Week 31 from 30th July to 5th August, 2018



ESR Division

HIGHLIGHT OF THE WEEK:

□ Trend of four priority diseases with highest morbidity in 2018:

The trend of cases of the highest morbidity causes through e-IDSR notified during the last 31 weeks include Malaria, Influenza like illness, Non blood diarrhea and severe pneumonia under five years. **Cont'd. on P.2**

III. Deaths reported nationally: Two deaths notified nationwide

- One death due to **Malaria** was notified from Mibilizi hospital
- One death due to **Meningococcal meningitis** was notified from Rwinkwavu hospital

- **Measles:** eight suspected case of Measles were notified including two cases from Karambo HC of Gisenyi hospital, two cases from Ntaganzwa HC of Muhororo hospital and one case each from Cyahinda HC of Munini, Musango HC of Kibuye hospital, Rangiro HC of Kibogora hospital and Tabagwe HC of Nyagatare hospital
- **Meningococcal Meningitis:** Two suspected cases were notified one case each from Kinihira and Rwinkwavu hospitals
- **Rubella:** One suspected case was notified from Matimba HC of Nyagatare hospital
- **Dog bites (rabies exposure):** Three cases of dog bites were notified one case each from Cyahinda HC of Munini hospital, Kibuye and Kigeme hospitals
- **Typhoid fever:** 11 suspected cases of Typhoid fever were notified including 12 cases from Mahama refugee camp, one case from Kinihira hospital and one case from Kagitumba HC of Nyagatare hospital

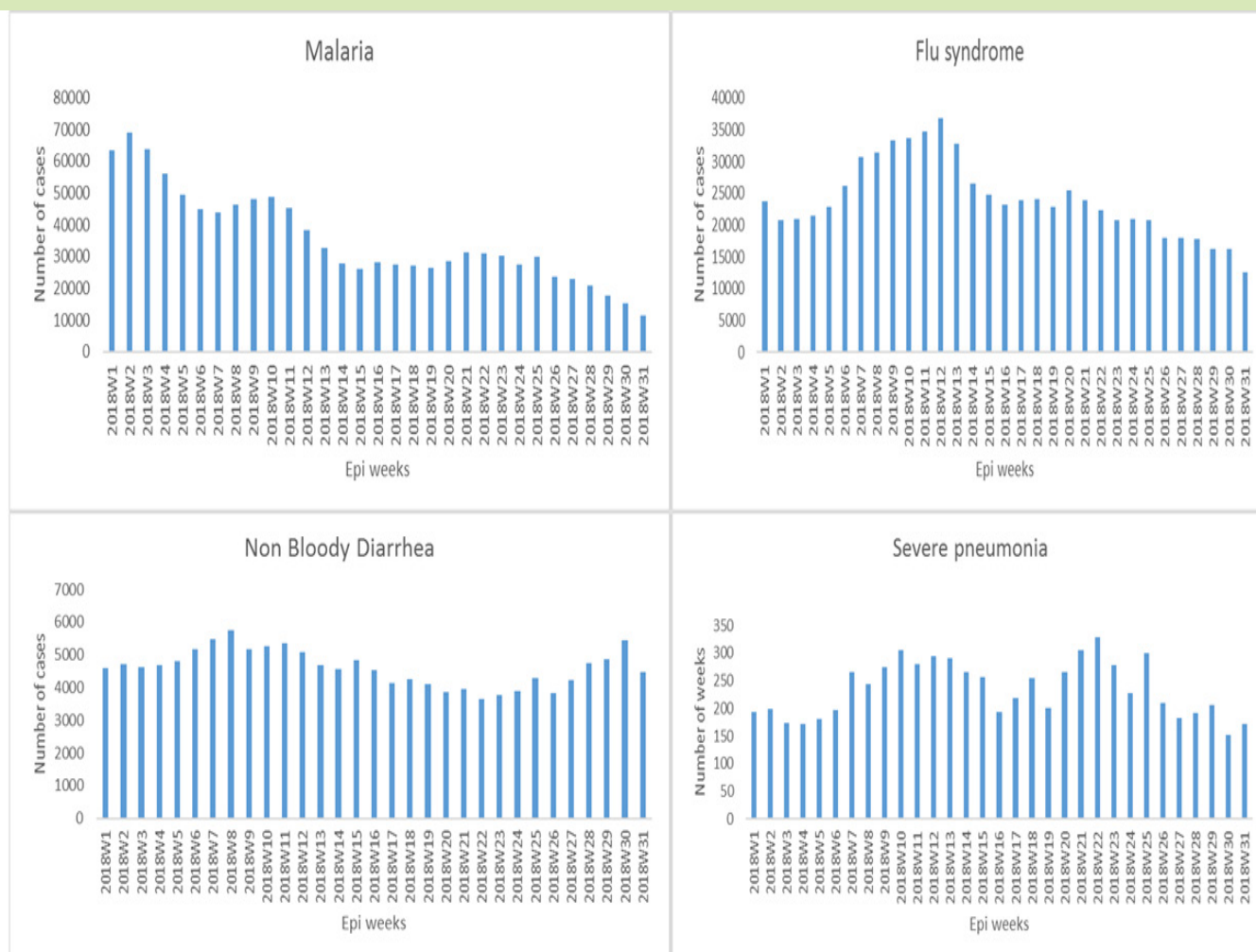
Editorial team: Dr J. Nyamusore, Dr L. Hakizimana, Dr J. Omolo, A. Kabeja, E. Nshimiyimana, H. Balisanga, F. Nizeyimana, A. Mutoni, A. Kapiteni, L. Ruyange, M. Utumuliza



EPIDEMIC SURVEILLANCE AND RESPONSE WEEKLY REPORT

From P. 1

Fig 1. Trend of High Morbidity diseases for the last 31 weeks, 2018



Source: eIDSR Rwanda

EPIDEMIC SURVEILLANCE AND RESPONSE WEEKLY REPORT

THE FOLLOWING 39 PUBLIC HEALTH FACILITIES DIDN'T SUBMIT THEIR REPORTS IN WEEK 31/2018

Province	Hospital	Health Facility		Province	Hospital	Health Facility
East	Kibungo S	Gituku CS		South	Gitwe Sub	Muremure CS
East	Kirehe Sub	Bukora CS		South	Kabgayi S	Kabgayi DH
East	Kiziguro S	Rugarama (gatsibo) CS		South	Kabgayi S	Mata CS
East	Nyagatare	Muhambo CS		South	Kabutare S	CUSP Butare CS
East	Nyagatare	Nyagatare DH		South	Kabutare S	Karama (huye) CS
East	Nyagatare	Nyagatare Prison		South	Kabutare S	Rusatira-kinazi CS
East	Nyagatare	Tabagwe CS		South	Kabutare S	Simbi CS
East	Rwinkwavu	Nyamirama CS		South	Kabutare S	Sovu CS
North	Byumba S	Muhondo (kageyo) CS		South	Kigeme Su	Ngara CS
North	Kinshira Su	Tare CS		South	Kigeme Su	Nyarusiza CS
North	Nemba Su	Busengo CS		South	Kigeme Su	Shaba (nyamagabe) CS
North	Ruhengeri	Prison Ruhengeri DISP		South	Munini Su	Muganza CS
North	Ruli Sub D	Minazi CS		South	Munini Su	Nyamyumba CS
West	Gisenyi Su	Busigari CS		South	Nyanza Su	Gahombo CS
West	Gisenyi Su	Gisenyi CS		South	Nyanza Su	Nyanza CS
West	Mibilizi Su	Mashesha CS		South	Nyanza Su	Nyarusange (nyanza) CS
West	Mugonero	Mugonero CS		South	Remera Ru	Kayenzi CS
West	Murunda S	Cyimbili CS		Kigali City	Kibagabag	Nyacyonga CS
West	Shyira Sub	Mwiyaniike CS		Kigali City	Masaka S	Kairos CS
				Kigali City	Muhima S	PCK(Gitega Pris)

EPIDEMIC SURVEILLANCE AND RESPONSE WEEKLY REPORT

Table 2. CASES NOTIFIED DURING WEEK 31, 2018

Province	Hospital	Public HF's			Private HF's			IDSR Priority diseases : number of notified cases																						
		Expected	Completeness (%)	Timeliness (%)	Expected	Completeness (%)	Timeliness (%)	Non Bloody Diarrhea	Flu syndrom e	Malaria	Severe pneumo nia under five years	Acute Flaccid Paralysis	Bloody Diarrhea	Chicken Pox - Varicella	Cholera	Diphtheri a	Epidemic Typhus	Food Poisonin g	Haemorr hagic fever	Sum of Cases Measles	Meningo coccal Meningiti s	Mumps	Neonatal tetanus	Plague	Dog bites (Rabies exposure)	Rubella	Typhoid Fever	Viral Conjunct ivitis	Whoopin g Cough Pertussis	Yellow Fever
East	Gahini	9	100.0	77.8	3	33.3	33.3	46	161	773	1	0	0	0	0	0	0	0	0	0	0	0	0	0	0	0	0	0	0	0
East	Kibungo	13	92.3	92.3	1	0.0	0.0	76	35	833	3	0	0	0	0	0	0	0	0	0	0	0	0	0	0	0	0	0	0	0
East	Kirehe	19	94.7	73.7	1	0.0	0.0	290	1099	248	28	0	0	0	0	0	0	0	0	0	0	0	0	0	0	0	9	0	0	0
East	Kiziguro	13	92.3	76.9	2	50.0	0.0	142	257	81	1	0	0	0	0	0	0	0	0	0	0	1	0	0	0	0	0	0	0	0
East	Ngarama	8	100.0	87.5	0			68	371	13	0	0	1	0	0	0	0	0	0	0	0	0	0	0	0	0	0	0	0	0
East	Nyagatare	22	81.8	72.7	14	14.3	0.0	186	295	93	7	0	1	1	0	0	0	0	0	1	0	0	0	0	0	1	1	0	0	0
East	Nyamata	17	100.0	82.4	0			189	553	319	5	0	0	0	0	0	0	0	0	0	0	2	0	0	0	0	0	0	0	0
East	Rwamagana	16	100.0	62.5	4	0.0	0.0	157	917	1046	4	0	0	1	0	0	0	0	0	0	0	1	0	0	0	0	0	0	0	0
East	Rwinkwavu	8	87.5	50.0	2	0.0	0.0	32	45	379	0	0	0	0	0	0	0	0	0	0	1	0	0	0	0	0	0	0	0	0
Kigali City	Kacyiru	1	100.0	100.0	0			0	13	0	0	0	0	0	0	0	0	0	0	0	0	0	0	0	0	0	0	0	0	0
Kigali City	Kibagabaga	17	94.1	76.5	29	34.5	24.1	245	919	602	5	0	0	0	0	0	0	0	0	0	0	4	0	0	0	0	0	0	0	0
Kigali City	Masaka	11	90.9	45.5	20	25.0	15.0	61	276	221	3	0	0	0	0	0	0	0	0	0	0	0	0	0	0	0	0	0	0	0
Kigali City	Muhima	12	91.7	66.7	28	42.9	14.3	96	321	286	4	0	2	3	0	0	0	0	0	0	0	3	0	0	0	0	0	0	0	0
North	Butaro	20	100.0	70.0	1	100.0	100.0	164	212	35	5	0	0	0	0	0	0	0	0	0	0	1	0	0	0	0	0	0	0	0
North	Byumba	26	96.2	88.5	3	0.0	0.0	136	537	189	14	0	0	1	0	0	0	0	0	0	0	3	0	0	0	0	0	0	0	0
North	Kinshira	10	90.0	80.0	1	0.0	0.0	70	16	28	3	0	0	0	0	0	0	0	0	0	1	0	0	0	0	0	1	0	0	0
North	Nemba	16	93.8	75.0	0			85	24	26	0	0	0	0	0	0	0	0	0	0	0	0	0	0	0	0	0	0	0	0
North	Ruhengeri	17	94.1	58.8	3	100.0	100.0	144	428	34	12	0	1	0	0	0	0	0	0	0	0	0	0	0	0	0	0	0	0	0
North	Ruli	9	88.9	77.8	0			34	27	61	3	0	0	0	0	0	0	0	0	0	0	1	0	0	0	0	0	0	0	0
North	Rutongo	13	100.0	76.9	0			66	260	127	1	0	0	0	0	0	0	0	0	0	0	13	0	0	0	0	0	0	0	0
South	Gakoma	6	100.0	100.0	1	0.0	0.0	46	203	131	2	0	0	0	0	0	0	0	0	0	0	0	0	0	0	0	0	0	0	0
South	Gitwe	9	88.9	77.8	0			27	108	299	1	0	0	0	0	0	0	0	0	0	0	0	0	0	0	0	0	0	0	0
South	Kabgayi	18	88.9	83.3	4	25.0	25.0	112	349	231	2	0	1	0	0	0	0	0	0	0	0	3	0	0	0	0	0	0	0	0
South	Kabutare	18	72.2	27.8	2	0.0	0.0	96	334	249	3	0	0	1	0	0	0	0	0	0	0	1	0	0	0	0	0	0	0	0
South	Kaduha	10	100.0	80.0	0			50	186	130	3	0	0	0	0	0	0	0	0	0	0	0	0	0	0	0	0	0	0	0
South	Kibilizi	10	100.0	90.0	0			150	184	209	4	1	1	0	0	0	0	0	0	0	0	0	0	0	0	0	0	0	0	0
South	Kigeme	12	75.0	66.7	2	50.0	0.0	43	250	28	9	0	1	0	0	0	0	0	0	0	0	0	0	0	1	0	0	0	0	0
South	Murundi	17	88.2	82.4	1	0.0	0.0	89	519	119	1	0	0	1	0	0	0	0	0	0	1	0	0	0	1	0	0	0	0	0
South	Nyanza	18	83.3	50.0	1	0.0	0.0	141	392	618	2	0	1	4	0	0	0	0	0	0	0	1	0	0	0	0	0	0	0	0
South	Remera Rukom	14	92.9	78.6	3	0.0	0.0	112	495	464	3	0	0	0	0	0	0	0	0	0	0	0	0	0	0	0	0	0	0	0
South	Ruhango	8	100.0	100.0	4	25.0	25.0	47	237	527	0	0	0	0	0	0	0	0	0	0	0	0	0	0	0	0	0	0	0	0
West	Bushenge	8	100.0	100.0	0			65	216	404	4	0	0	0	0	0	0	0	7	0	0	0	0	0	0	0	0	0	0	0
West	Gihundwe	9	100.0	88.9	2	100.0	100.0	69	163	142	1	1	0	0	0	0	0	0	0	0	0	0	0	0	0	0	0	0	0	0
West	Gisenyi	15	86.7	60.0	8	37.5	25.0	252	548	95	13	0	0	1	0	0	0	0	0	0	2	0	2	0	0	0	0	0	0	0
West	Kabaya	10	100.0	90.0	2	0.0	0.0	8	33	15	0	0	0	0	0	0	0	0	0	0	0	0	0	0	0	0	0	0	0	0
West	Kibogora	14	100.0	100.0	0			155	177	1365	2	0	0	0	0	0	0	0	0	0	1	0	0	0	0	0	0	0	0	0
West	Kibuye	13	100.0	76.9	0			126	259	166	3	0	0	0	0	0	0	0	0	0	1	0	0	0	1	0	0	0	0	0
West	Kirinda	6	100.0	50.0	0			37	33	42	3	0	0	0	0	0	0	0	0	0	0	0	0	0	0	0	0	0	0	0
West	Mibilizi	12	91.7	83.3	3	66.7	33.3	103	114	509	2	0	9	0	0	0	0	0	0	0	0	9	0	0	0	0	0	0	0	0
West	Mugonero	7	85.7	42.9	0			17	87	137	7	0	0	0	0	0	0	0	0	0	0	0	0	0	0	0	0	0	0	0
West	Muhororo	16	100.0	100.0	1	100.0	100.0	51	157	61	0	0	0	1	0	0	0	0	0	0	2	0	0	0	0	0	0	0	0	0
West	Murunda	18	94.4	88.9	0			227	204	95	4	0	0	0	0	0	0	0	0	0	0	0	0	0	0	0	0	0	0	0
West	Shyamba	17	94.1	82.4	1	0.0	0.0	153	529	23	3	0	0	0	0	0	0	0	0	0	0	4	0	0	0	0	0	0	0	0
Referral Hc	CHUB	1	100.0	100.0	0			12	21	3	0	0	0	0	0	0	0	0	0	0	0	0	0	0	0	0	0	0	0	0
Referral Hc	CHUK	1	100.0	100.0	0			2	5	1	0	0	0	0	0	0	0	0	0	0	0	0	0	0	0	0	0	0	0	0
Referral Hc	RMH	1	100.0	100.0	0			0	1	2	0	0	0	0	0	0	0	0	0	0	0	0	0	0	0	0	0	0	0	0
Grand Total		565	93.1	75.4	147	31.3	18.4	4477	12570	11459	171	2	9	23	0	0	0	7	0	8	2	50	0	0	3	1	11	0	0	0