



SUMMARY

I. COMPLETENESS AND TIMELINESS

- For Public Health Facilities Completeness: **88.8 %** Timeliness: **59.8 %**
- For Privates Health Facilities Completeness: **28.0 %** Timeliness: **8.2 %**
- Overall Completeness: **72.6 %** Timeliness: **49.2 %**

- **Good performance (with 100% timeliness):** **Kinshira, Ruli, Gakoma and Muhororo hospitals**
- **Poor performance (timeliness between 50-80%):** **Kibogora, Rutongo, Kibagabaga, Byumba, Mugonero, Nyamata, Butaro, Gitwe, Gihundwe, Kirehe, Muhima, Remera Rukoma, Rwamagana, Nyagatare, Masaka and Kibuye hospitals**
- **Very poor performance (Timeliness less than 50%):** **Kiziguro, Mibilizi, Ruhengeri, Kaduha, Gisenyi, Nyanza, Bushenge, Gahini, Kabgayi, Kibungo, Rwinkwavu, Kabaya, Kabutare and Kirinda hospitals**

II. Cases reported by Public and Private HF:

NB. The reporting day was an official holiday

- **Malaria:** 23,063 cases
- **Flu syndrome:** 17,896 cases
- **Non-bloody Diarrhoea:** 4,225 cases
- **Severe Pneumonia in children under five years:** 183 cases
- **Bloody diarrhoea:** 14 cases
- **Chicken pox:** 7 cases
- **Mumps:** 53 cases
- **Meningococcal Meningitis:** Two suspected case were notified one case each from Masaka HC and Ngarama hospital

EPIDEMIC SURVEILLANCE AND RESPONSE WEEKLY REPORT

Week 27 from 02nd to 08th July, 2018



ESR Division

HIGHLIGHT OF THE WEEK:

- **Trend of four priority diseases with highest morbidity in 2018:** The trend of cases of the highest morbidity causes through e-IDSRS notified during the last 27 weeks include Malaria, Influenza like illness, Non blood diarrhea and severe pneumonia under five years. **Cont'd on P.2**

III. Deaths reported nationally: three deaths notified countrywide

- Three deaths due to **Malaria** were notified one case each from Gahini, Kibogora and Murunda hospitals

- **Food poisoning:** three cases were notified from Ruhunde HC of Butaro hospital
- **Dog bites (rabies exposure):** one case of dog bites was notified from Rwinkwavu hospital
- **Rubella:** seven suspected cases of Rubella were notified from Musenyi HC of Byumba hospital
- **Typhoid fever:** 15 suspected cases of Typhoid fever were notified including 12 cases from Mahama refugee camp, Two cases from Gasiza HC of Byumba and one case from Kigeme hospital

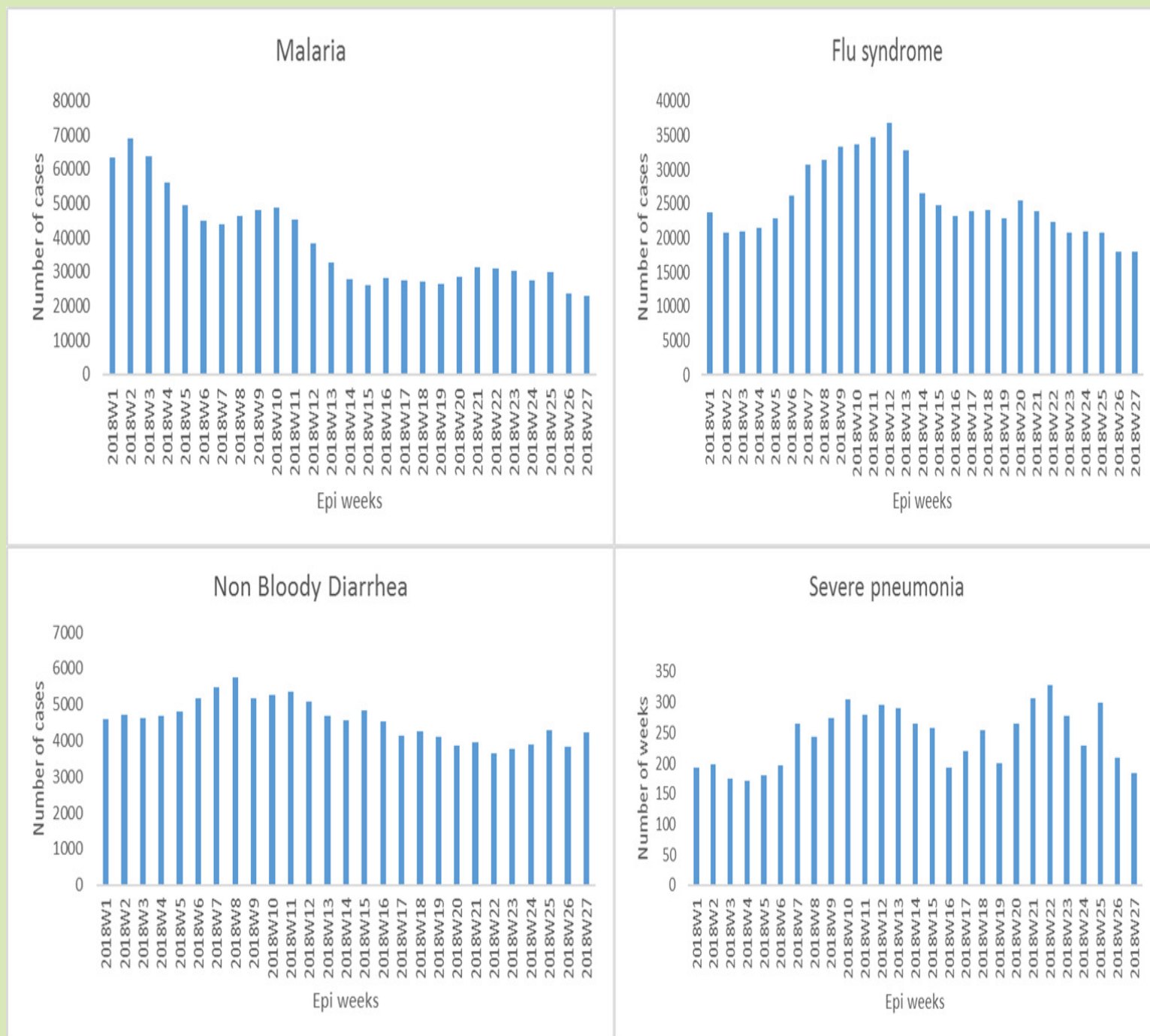
Editorial team: Dr J. Nyamusore, Dr L. Hakizimana, Dr J. Omolo, A. Kabeja, E. Nshimiyimana, H. Balisanga, F. Nizeyimana, A. Mutoni, A. Kapiteni, L. Ruyange, M. Utamuliza



EPIDEMIC SURVEILLANCE AND RESPONSE WEEKLY REPORT

From P. 1

Fig 1. Trend of High Morbidity diseases for the last 27 weeks, 2018



Source: eIDSR Rwanda

EPIDEMIC SURVEILLANCE AND RESPONSE WEEKLY REPORT

Table 1: THE FOLLOWING 63 PUBLIC HEALTH FACILITIES DIDN'T SUBMIT THEIR REPORTS IN WEEK 27/2018

Province	Hospital	Health Facility		Province	Hospital	Health Facility		Province	Hospital	Health Facility
East	Kibungo	Zaza CS		South	Gitwe	Mwendo (Gitwe) CS		South	Nyanza	Nyanza CS
East	Kirehe	Bukora CS		South	Kabgayi	Buramba CS		South	Nyanza	Nyarusange (nyanza) CS
East	Kirehe	Mahama CS		South	Kabgayi	Kabgayi DH		South	Ruhango	Mbuye CS
East	Kirehe	Mahama Refugee Camp HC		South	Kabgayi	Mata CS		South	Ruhango	Ruhango PH
East	Kiziguro	Gitoki CS		South	Kabgayi	Nyarusange (muhanga) CS		West	Gihundwe	Prison Rusizi
East	Kiziguro	Kiziguro (gatsibo) CS		South	Kabutare	Busoro-gishamvu CS		West	Gisenyi	Bugeshi CS
East	Kiziguro	Muhura CS		South	Kabutare	Huye Police CS		West	Gisenyi	Mudende CS
East	Nyagatare	Cyabayaga CS		South	Kabutare	Kabutare DH		West	Gisenyi	Nyakiniba CS
East	Nyagatare	Nyagatare Prison		South	Kabutare	Karama (huye) CS		West	Kabaya	Gashonyi CS
East	Nyagatare	Nyakigando (Nyagatare) CS		South	Kabutare	Kinyamakara CS		West	Kabaya	Muramba CS
East	Nyamata	Mwogo CS		South	Kabutare	Matyazo CS		West	Mibiliz	Mibilizi DH
East	Rwamagari	Muyumbu CS		South	Kabutare	Mukura (Huye) CS		West	Mugoner	Karora CS
East	Rwinkwavu	Cyarubare CS		South	Kabutare	Prison Karubanda Pris (Butare Huye)		West	Murunda	Biruyi CS
Kigali City	Kibagabaga	Kabuye CS		South	Kabutare	Ruhashya CS				
Kigali City	Masaka	Gahanga CS		South	Kabutare	Rusatira-kinazi CS				
Kigali City	Masaka	Gatenga CS		South	Kabutare	Rwaniro CS				
Kigali City	Masaka	Kicukiro CS		South	Kabutare	Simbi CS				
North	Butaro	Rusasa CS		South	Kabutare	Sovu CS				
North	Byumba	Byumba DH		South	Kigeme	Ngara CS				
North	Byumba	Prison Miyove		South	Kigeme	Uwinkingi CS				
North	Nemba	Janja CS		South	Nyanza	Busoro CS				
North	Nemba	Nyundo (gakenke) CS		South	Nyanza	Cyaratsi CS				
North	Ruhengeri	Kinigi CS		South	Nyanza	Gahombo CS				
North	Ruhengeri	Nyakinama CS		South	Nyanza	Kirambi CS				
North	Rutongo	Murambi CS		South	Nyanza	Nyamiyaga (Nyanza) CS				

EPIDEMIC SURVEILLANCE AND RESPONSE WEEKLY REPORT

Table 2. CASES NOTIFIED DURING WEEK 27, 2018

Province	Hospital	Public HF's			Private HF's			IDSR Priority diseases : number of notified cases																						
		Expected	Completeness (%)	Timeliness (%)	Expected	Completeness (%)	Timeliness (%)	Non Bloody Diarrhea	Flu syndrom e	Malaria	Severe pneumo nia under five years	Acute Flaccid Paralysis	Bloody Diarrhea	Chicken Pox - Varicella	Cholera	Diphtheria	Epidemic Typhus	Food Poisoning	Haemorrhagic fever	Sum of Cases Measles	Meningococcal Meningitis	Mumps	Neonatal tetanus	Plague	Dog bites (Rabies exposure)	Rubella	Typhoid Fever	Viral Conjunct ivitis	Whooping Cough Pertussis	Yellow Fever
East	Gahini	9	100	33.3333	3	33.3333	0	43	440	2374	1	0	0	0	0	0	0	0	0	0	0	0	0	0	0	0	0	0	0	0
East	Kibungo	13	92.30769	30.76923	1	0	0	74	73	2163	9	0	3	0	0	0	0	0	0	0	0	0	0	0	0	0	0	0	0	0
East	Kirehe	19	84.21053	63.15789	1	0	0	418	1706	406	9	0	2	3	0	0	0	0	0	0	0	2	0	0	0	0	0	12	0	0
East	Kiziguro	13	76.92308	46.15385	2	0	0	91	393	331	1	0	0	0	0	0	0	0	0	0	0	0	0	0	0	0	0	0	0	0
East	Ngarara	8	100	87.5	0	0	0	71	477	32	2	0	0	0	0	0	0	0	0	0	0	1	0	0	0	0	0	0	0	0
East	Nyagatare	22	86.36364	54.54545	14	28.57143	14.28571	236	387	252	5	0	0	0	0	0	0	0	0	0	0	0	0	0	0	0	0	0	0	0
East	Nyamata	17	94.11765	70.58824	0	0	0	144	819	605	3	0	0	0	0	0	0	0	0	0	0	0	0	0	0	0	0	0	0	0
East	Rwamagana	16	93.75	56.25	4	0	0	197	1601	2599	3	0	0	0	0	0	0	0	0	0	0	0	0	0	0	0	0	0	0	0
East	Rwinkwavu	8	87.5	25	2	0	0	61	115	1572	2	0	0	0	0	0	0	0	0	0	0	0	0	0	0	1	0	0	0	0
Kigali City	Kibagabaga	17	94.11765	76.47059	29	31.03448	6.896552	204	936	1044	7	0	1	0	0	0	0	0	0	0	0	1	0	0	0	0	0	0	0	0
Kigali City	Masaka	11	72.72727	54.54545	20	20	5	60	247	451	4	0	1	0	0	0	0	0	0	0	0	1	1	0	0	0	0	0	0	0
Kigali City	Muhima	12	100	58.33333	28	32.14286	7.142857	117	548	440	4	0	1	0	0	0	0	0	0	0	0	1	0	0	0	0	0	0	0	0
Kigali City	Kacyiru	1	100	100	0	0	0	7	7	7	0	0	0	0	0	0	0	0	0	0	0	0	0	0	0	0	0	0	0	0
North	Butaro	20	95	70	1	100	100	190	448	47	10	0	3	0	0	0	0	3	0	0	0	2	0	0	0	0	0	0	0	0
North	Byumba	26	92.30769	73.07692	3	0	0	88	688	296	1	0	0	0	0	0	0	0	0	0	0	1	0	0	0	7	2	0	0	0
North	Kinshira	10	100	100	1	0	0	36	43	64	0	0	0	0	0	0	0	0	0	0	0	1	0	0	0	0	0	0	0	0
North	Nemba	16	87.5	50	0	0	0	90	28	35	4	0	0	0	0	0	0	0	0	0	0	0	0	0	0	0	0	0	0	0
North	Ruhengeri	17	88.23529	41.17647	3	100	0	183	681	54	14	0	0	0	0	0	0	0	0	0	0	0	0	0	0	0	0	0	0	0
North	Ruli	9	100	100	0	0	0	32	85	55	1	0	0	0	0	0	0	0	0	0	0	2	0	0	0	0	0	0	0	0
North	Rutongo	13	92.30769	76.92308	0	0	0	73	432	296	2	0	0	0	0	0	0	0	0	0	0	24	0	0	0	0	0	0	0	0
South	Gakoma	6	100	100	1	0	0	83	360	139	0	0	0	0	0	0	0	0	0	0	0	0	0	0	0	0	0	0	0	0
South	Gitwe	9	88.88889	66.66667	0	0	0	16	118	540	1	0	0	0	0	0	0	0	0	0	0	0	0	0	0	0	0	0	0	0
South	Kabagayi	18	77.77778	33.33333	4	25	0	52	381	378	6	0	0	0	0	0	0	0	0	0	0	0	0	0	0	0	0	0	0	0
South	Kabutare	18	27.77778	16.66667	2	0	0	39	328	198	0	0	0	0	0	0	0	0	0	0	0	0	0	0	0	0	0	0	0	0
South	Kaduha	10	100	40	0	0	0	43	247	179	6	0	0	0	0	0	0	0	0	0	0	0	0	0	0	0	0	0	0	0
South	Kibilizi	10	100	90	0	0	0	175	602	267	5	0	1	0	0	0	0	0	0	0	0	0	0	0	0	0	0	0	0	0
South	Kigeme	12	83.33333	83.33333	2	50	0	46	426	94	15	0	0	0	0	0	0	0	0	0	0	13	0	0	0	0	1	0	0	0
South	Munini	17	100	94.11765	1	0	0	100	469	170	4	0	0	0	0	0	0	0	0	0	0	0	0	0	0	0	0	0	0	0
South	Nyanza	18	61.11111	38.88889	1	0	0	77	410	390	10	0	0	1	0	0	0	0	0	0	0	1	0	0	0	0	0	0	0	0
South	Remera Rukoma	14	100	57.14286	3	0	0	46	610	864	3	0	1	0	0	0	0	0	0	0	0	0	0	0	0	0	0	0	0	0
South	Ruhango	8	75	50	4	25	0	62	382	857	0	0	0	2	0	0	0	0	0	0	0	0	0	0	0	0	0	0	0	0
West	Bushege	8	100	37.5	0	0	0	54	199	506	12	0	0	0	0	0	0	0	0	0	0	0	0	0	0	0	0	0	0	0
West	Gihundwe	9	88.88889	66.66667	2	100	100	45	236	309	3	0	0	0	0	0	0	0	0	0	0	0	0	0	0	0	0	0	0	0
West	Gisenyi	15	80	40	8	25	0	139	607	354	13	0	0	0	0	0	0	0	0	0	0	0	0	0	0	0	0	0	0	0
West	Kabaya	10	80	20	2	0	0	4	74	32	1	0	0	0	0	0	0	0	0	0	0	0	0	0	0	0	0	0	0	0
West	Kibogora	14	100	78.57143	0	0	0	147	397	2415	6	0	0	0	0	0	0	0	0	0	0	0	0	0	0	0	0	0	0	0
West	Kibuye	13	100	53.84615	0	0	0	99	347	259	2	0	0	0	0	0	0	0	0	0	0	0	0	0	0	0	0	0	0	0
West	Kirinda	6	100	16.66667	0	0	0	39	92	174	2	0	0	0	0	0	0	0	0	0	0	0	0	0	0	0	0	0	0	0
West	Mibilizi	12	91.66667	41.66667	3	66.66667	33.33333	183	147	1333	2	0	0	0	0	0	0	0	0	0	0	0	0	0	0	0	0	0	0	0
West	Mugonero	7	85.71429	71.42857	0	0	0	20	95	163	1	0	0	0	0	0	0	0	0	0	0	0	0	0	0	0	0	0	0	0
West	Muhororo	16	100	100	1	100	100	45	149	99	1	0	0	0	0	0	0	0	0	0	0	0	0	0	0	0	0	0	0	0
West	Murunda	18	94.44444	50	0	0	0	170	380	177	4	0	0	0	0	0	0	0	0	0	0	1	0	0	0	0	0	0	0	0
West	Shyira	17	100	88.23529	1	0	0	130	657	26	3	0	2	0	0	0	0	0	0	0	0	3	0	0	0	0	0	0	0	0
Referral H	CHUB		100	100	0	0	0	3	29	2	1	0	0	0	0	0	0	0	0	0	0	0	0	0	0	0	0	0	0	0
Referral H	CHUK		100	100	0	0	0	0	0	6	0	0	0	0	0	0	0	0	0	0	0	0	0	0	0	0	0	0	0	0
Referral H	RMH		100	0	0	0	0	0	0	9	0	0	0	0	0	0	0	0	0	0	0	0	0	0	0	0	0	0	0	0
Grand Total			88.8496	59.823	147	27.8912	8.16327	4225	17896	23063	183	0	14	7	0	0	0	3	0	0	2	53	0	0	1	7	15	0	0	0