



SUMMARY

I. COMPLETENESS AND TIMELINESS

- For Public Health Facilities Completeness: **95.7 %** Timeliness: **81.9 %**
- For Privates Health Facilities Completeness: **33.3 %** Timeliness: **20.4 %**
- Overall Completeness: **82.8 %** Timeliness: **69.2 %**

- **Good performance (with 100% timeliness):** Ngarama, Nyamata, Butaro, Rutongo, Remera Rukoma, Ruhango, Gihundwe and Kibogora hospitals
- **Poor performance (timeliness between 50-80%):** Kirehe, Gitwe, Kabgayi, Muhima, Shyira, Rwinkwavu, Kigeme, Bushenge, Mibilizi, Kabutare, Mugonero, Kabaya, Kiziguro, Kibuye, Nyagatare, Masaka, Nyanza and Kaduha hospitals
- **Very poor performance:** Timeliness less than 50%: Ruhengeri hospital

II. Cases reported by Public and Private HFs:

- **Malaria:** 29,946 cases
- **Flu syndrome:** 20,783 cases
- **Non-bloody Diarrhoea:** 4,304 cases
- **Severe Pneumonia in children under five years:** 299 cases
- **Bloody diarrhoea:** 10 cases
- **Chicken pox:** 17 cases
- **Mumps:** 40 cases
- **Food poisoning:** 27 cases were notified including 22 cases from Musenyi HC of Gicumbi district and five cases from Nyagatare hospital
- **Rift Valley fever:** Three suspected cases of rift valley fever were notified including two cases from Rwigyema hospital and one case from Kibungo hospital

EPIDEMIC SURVEILLANCE AND RESPONSE WEEKLY REPORT

Week 25 from 18th to 24th June, 2018



ESR Division

HIGHLIGHT OF THE WEEK:

□ Trend of four priority diseases with highest morbidity in 2018:

The trend of cases of the highest morbidity causes through e-IDSR notified during the last 25 weeks include Malaria, Influenza like illness, Non blood diarrhea and severe pneumonia under five years. **Cont'd. on P.2**

III. Deaths reported nationally: Three deaths notified countrywide

- Three deaths due to **Malaria** were notified including two deaths from Nembu hospital and one case from Gahini hospital

- **Meningococcal Meningitis:** One suspected case was notified from Ngarama hospital
- **Dog bites (rabies exposure):** Five cases of dog bites were notified including two cases from Mugonero and one case each from Kibuye, Kigeme and Kibilizi hospitals.
- **Rubella:** One suspected case of Rubella was notified from Mahama refugee camp
- **Typhoid fever:** 31 suspected cases of Typhoid fever were notified including 29 cases from Mahama refugee camp and one case each from Kigeme and Mugonero hospitals
- **Viral conjunctivitis:** one case from Mont Nyamagumba clinic of Musanze

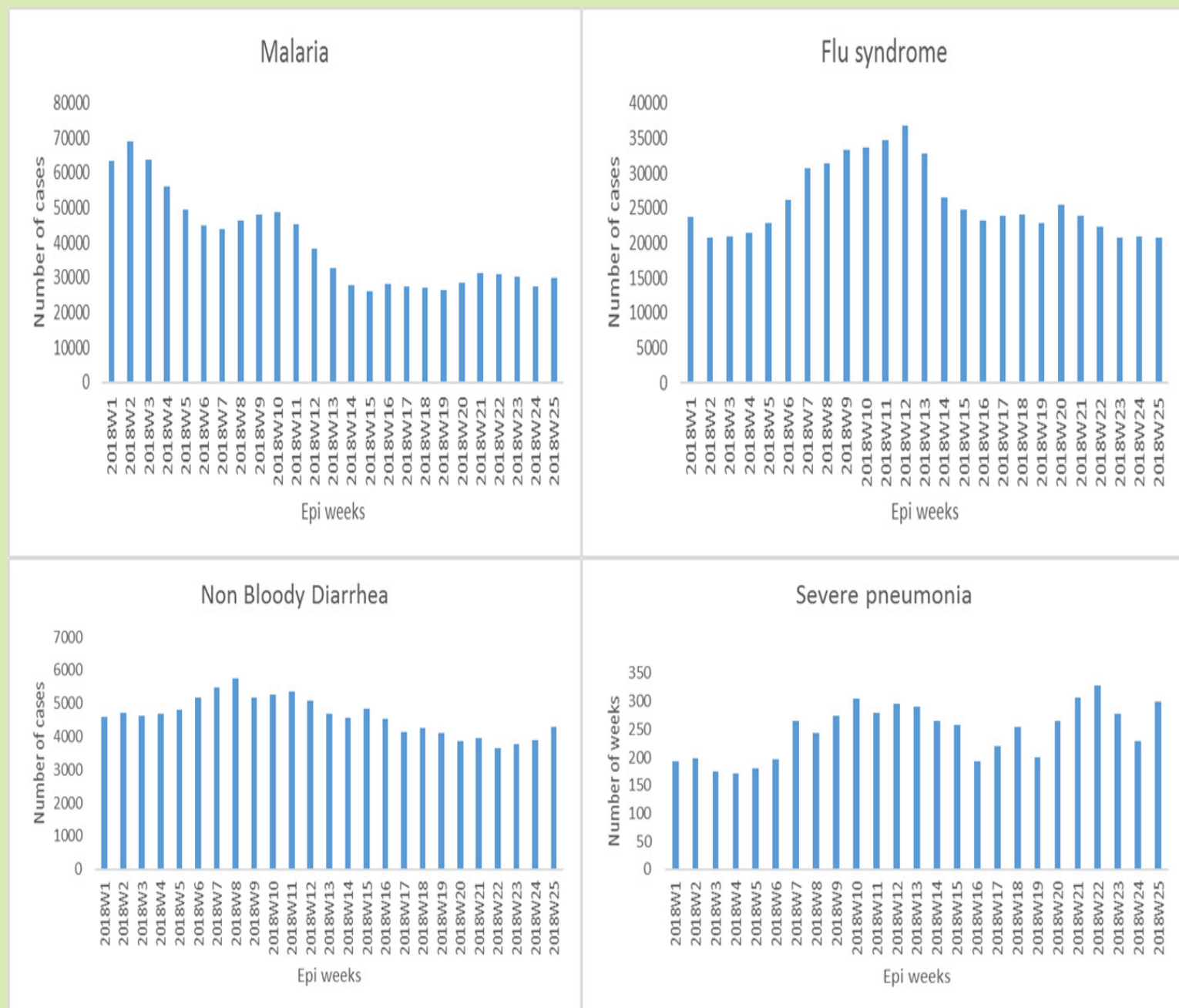
Editorial team: Dr J. Nyamusore, Dr L. Hakizimana, Dr J. Omolo, A. Kabeja, E. Nshimiyimana, H. Balisanga, F. Nizeyimana, A. Mutoni, A. Kapiteni, L. Ruyange, M. Utumuliza



EPIDEMIC SURVEILLANCE AND RESPONSE WEEKLY REPORT

From P. 1

Fig1. Trend of High Morbidity diseases for the last 25 weeks, 2018



Source: eIDSR Rwanda

EPIDEMIC SURVEILLANCE AND RESPONSE WEEKLY REPORT

Table 1: THE FOLLOWING 24 PUBLIC HEALTH FACILITIES DIDN'T SUBMIT THEIR REPORTS IN WEEK 25/2018

Province	Hospital	Health Facility
East	Kirehe	Mahama Refugee Camp HC
East	Kiziguro	Kiziguro (gatsibo) CS
East	Nyagatare	Nyagatare Prison
East	Rwinkwavu	Cyarubare CS
Kigali City	Muhima	PCK(Gitega Pris)
North	Kinihira	Tare CS
North	Ruli	Coko (ruli) CS
South	Gitwe	Mwendo (Gitwe) CS
South	Kabgayi	Nyarusange (muhanga) CS
South	Kabutare	Busoro-gishamvu CS
South	Kabutare	Ruhashya CS
South	Kabutare	Rwaniro CS
South	Kaduha	Buruhukiro CS
South	Kibilizi	Kansi CS
South	Nyanza	Gahombo CS
South	Nyanza	Nyanza CS
South	Nyanza	Nyarusange (nyanza) CS
West	Bushenge	Gisakura CS
West	Kibuye	Rufungo CS
West	Kibuye	Rugabano CS
West	Kirinda	Kirinda DH
West	Mibilizi	Mibilizi DH
West	Mugonero	Mubuga CS
West	Mugonero	Mugonero CS

EPIDEMIC SURVEILLANCE AND RESPONSE WEEKLY REPORT

Table 2. CASES NOTIFIED DURING WEEK 25, 2018

Province	Hospital	Public HFs			Private HFs			IDSR Priority diseases : number of notified cases																							
		Expected	Completeness (%)	Timeliness (%)	Expected	Completeness (%)	Timeliness (%)	Non Bloody Diarrhea	Flu syndrome	Malaria	Severe pneumonia under five years	Acute Flaccid Paralysis	Bloody Diarrhea	Chicken Pox - Varicella	Cholera	Diphtheria	Epidemic Typhus	Food Poisoning	Haemorrhagic fever	Sum of Cases Measles	Meningococcal Meningitis	Mumps	Neonatal tetanus	Plague	Dog bites (Rabies exposure)	Rubella	Typhoid Fever	Viral Conjunctivitis	Whooping Cough Pertussis	Yellow Fever	
East	Gahini	9	100.0	88.9	3	66.7	33.3	48	431	2829	3	0	0	0	0	0	0	0	0	0	0	0	0	0	0	0	0	0	0	0	
East	Kibungo	13	100.0	92.3	1	0.0	0.0	82	60	2924	3	0	0	0	0	0	0	0	3	0	0	0	0	0	0	0	0	0	0	0	
East	Kirehe	19	94.7	78.9	1	0.0	0.0	412	1885	589	71	0	1	2	0	0	0	0	0	0	0	0	0	0	0	1	29	0	0	0	
East	Kiziguro	13	92.3	69.2	2	50.0	50.0	84	482	396	1	0	0	0	0	0	0	0	0	0	0	0	0	0	0	0	0	0	0	0	
East	Ngarama	8	100.0	100.0	0			52	525	30	0	0	0	0	0	0	0	0	0	0	0	1	0	0	0	0	0	0	0	0	
East	Nyagatare	22	95.5	59.1	14	35.7	14.3	221	471	226	9	0	1	1	0	0	0	5	0	0	0	0	0	0	0	0	0	0	0	0	
East	Nyamata	17	100.0	100.0	0			135	714	703	5	0	0	1	0	0	0	0	0	0	0	0	0	0	0	0	0	0	0	0	
East	Rwamagana	16	100.0	93.8	4	0.0	0.0	207	1607	3596	11	0	0	2	0	0	0	0	0	1	0	0	0	0	0	0	0	0	0	0	
East	Rwinkwavu	8	87.5	75.0	2	0.0	0.0	41	128	2144	4	0	0	0	0	0	0	0	0	0	0	0	0	0	0	0	0	0	0	0	
Kigali City	Kibagabaga	17	100.0	82.4	29	41.4	31.0	238	1180	1693	20	0	1	1	0	0	0	0	0	0	0	11	0	0	0	0	0	0	0	0	
Kigali City	Masaka	11	100.0	63.6	20	15.0	15.0	67	512	781	14	0	0	0	0	0	0	0	0	0	0	0	0	0	0	0	0	0	0	0	
Kigali City	Muhima	12	91.7	75.0	28	42.9	17.9	101	500	543	8	0	2	1	0	0	0	0	0	0	0	6	0	0	0	0	0	0	0	0	
Kigali City	Kacyiru	1	100.0	100.0	0			0	0	6	0	0	0	0	0	0	0	0	0	0	0	0	0	0	0	0	0	0	0	0	
North	Butaro	20	100.0	100.0	1	100.0	0.0	216	451	67	6	0	1	1	0	0	0	0	0	0	0	3	0	0	0	0	0	0	0	0	
North	Byumba	26	100.0	92.3	3	0.0	0.0	98	916	412	16	0	0	2	0	0	0	22	0	0	0	8	0	0	0	0	0	0	0	0	
North	Kinhiha	10	90.0	90.0	1	0.0	0.0	48	43	75	2	0	0	0	0	0	0	0	0	0	0	0	0	0	0	0	0	0	0	0	
North	Nemba	16	100.0	93.8	0			65	33	40	6	0	0	0	0	0	0	0	0	0	0	0	0	0	0	0	0	0	0	0	
North	Ruhengeri	17	100.0	47.1	3	100.0	66.7	155	699	59	13	0	1	1	0	0	0	0	0	0	0	3	0	0	0	0	0	0	1	0	
North	Ruli	9	88.9	88.9	0			36	113	112	4	0	0	0	0	0	0	0	0	0	0	0	0	0	0	0	0	0	0	0	
North	Rutongo	13	100.0	100.0	0			66	416	521	1	0	0	0	0	0	0	0	0	0	0	0	0	0	0	0	0	0	0	0	
South	Gakoma	6	100.0	83.3	1	0.0	0.0	57	291	187	0	0	0	0	0	0	0	0	0	0	0	0	0	0	0	0	0	0	0	0	
South	Gitwe	9	88.9	77.8	0			20	177	718	1	0	0	0	0	0	0	0	0	0	0	0	0	0	0	0	0	0	0	0	
South	Kabgayi	18	94.4	77.8	4	25.0	25.0	82	853	783	6	0	0	0	0	0	0	0	0	0	0	1	0	0	0	0	0	0	0	0	
South	Kabutare	18	83.3	72.2	2	0.0	0.0	89	550	291	3	0	1	1	0	0	0	0	0	0	0	0	0	0	0	0	0	0	0	0	
South	Kaduha	10	90.0	50.0	0			36	218	195	2	0	0	0	0	0	0	0	0	0	0	0	0	0	0	0	0	0	0	0	
South	Kibilizi	10	90.0	80.0	0			152	624	225	4	0	1	0	0	0	0	0	0	0	0	0	0	0	0	1	0	0	0	0	
South	Kigeme	12	100.0	75.0	2	50.0	0.0	62	490	131	8	0	0	1	0	0	0	0	0	0	0	0	0	0	0	1	0	1	0	0	
South	Munini	17	100.0	94.1	1	100.0	100.0	102	757	264	5	0	0	0	0	0	0	0	0	0	0	1	0	0	0	0	0	0	0	0	
South	Nyanza	18	83.3	55.6	1	0.0	0.0	117	575	945	15	0	1	0	0	0	0	0	0	0	0	1	0	0	0	0	0	0	0	0	
South	Remera Rukoma	14	100.0	100.0	3	0.0	0.0	54	805	1216	0	0	0	0	0	0	0	0	0	0	0	0	0	0	0	0	0	0	0	0	
South	Ruhango	8	100.0	100.0	4	25.0	25.0	66	325	1142	0	0	0	0	0	0	0	0	0	0	0	0	0	0	0	0	0	0	0	0	
West	Bushenge	8	87.5	75.0	0			34	142	449	5	0	0	0	0	0	0	0	0	0	0	0	0	0	0	0	0	0	0	0	
West	Gihundwe	9	100.0	100.0	2	50.0	50.0	62	250	420	2	0	0	0	0	0	0	0	0	0	0	0	0	0	0	0	0	0	0	0	
West	Gisenyi	15	100.0	86.7	8	37.5	25.0	195	848	746	17	0	0	0	0	0	0	0	0	0	0	2	0	0	0	0	0	0	0	0	
West	Kabaya	10	100.0	70.0	2	0.0	0.0	37	149	56	1	0	0	0	0	0	0	0	0	0	0	0	0	0	0	0	0	0	0	0	
West	Kibogora	14	100.0	100.0	0			112	286	1877	8	0	0	3	0	0	0	0	0	0	0	0	0	0	0	0	0	0	0	0	
West	Kibuye	13	84.6	61.5	0			108	356	303	6	0	0	0	0	0	0	0	0	0	0	0	0	0	1	0	0	0	0	0	
West	Kirinda	6	83.3	83.3	0			21	152	213	1	0	0	0	0	0	0	0	0	0	0	0	0	0	0	0	0	0	0	0	
West	Mibilizi	12	91.7	75.0	3	33.3	0.0	152	152	1459	3	0	0	0	0	0	0	0	0	0	0	0	0	0	0	0	0	0	0	0	
West	Mugonero	7	71.4	71.4	0			15	107	211	4	0	0	0	0	0	0	0	0	0	0	0	0	0	2	0	1	0	0	0	
West	Muhororo	16	100.0	93.8	1	100.0	100.0	53	167	114	0	0	0	0	0	0	0	0	0	0	0	0	0	0	0	0	0	0	0	0	
West	Murunda	18	100.0	94.4	0			169	495	214	7	0	0	0	0	0	0	0	0	0	0	1	0	0	0	0	0	0	0	0	
West	Shyira	17	100.0	76.5	1	0.0	0.0	134	803	26	2	0	0	0	0	0	0	0	0	0	0	3	0	0	0	0	0	0	0	0	
Referral Hq	CHUB	1	100.0	100.0	0			2	45	5	2	0	0	0	0	0	0	0	0	0	0	0	0	0	0	0	0	0	0	0	
Referral Hq	CHUK	1	100.0	100.0	0			1	0	6	0	0	0	0	0	0	0	0	0	0	0	0	0	0	0	0	0	0	0	0	0
Referral Hq	RMH	1	100.0	0.0	0			0	0	4	0	0	0	0	0	0	0	0	0	0	0	0	0	0	0	0	0	0	0	0	0
Grand Total		565	95.8	81.9	147	33.3	20.4	4304	20783	29946	299	0	10	17	0	0	0	27	4	0	1	40	0	0	5	1	31	1	0	0	