



SUMMARY

I. COMPLETENESS AND TIMELINESS

- For Public Health Facilities Completeness: **92.9 %** Timeliness: **84.6 %**
- For Privates Health Facilities Completeness: **25.1 %** Timeliness: **22.4 %**
- Overall Completeness: **78.4 %** Timeliness: **71.7 %**

- **Good performance (with 100% timeliness):** Kibungo, Ngarama, Kinihira, Ruli, Ruhango, Kabaya and Muhororo hospitals
- **Poor performance (timeliness between 50-80%):** Kirehe, Gahini, Nyagatare, Rwamagana, Muhima, Bushenge, Mibilizi, Gisenyi, Kabutare, Kiziguro, Gihundwe, Rwinkwavu, Nyanza and Ruhengeri hospitals
- **Very poor performance:** Timeliness less than 50%: Kirinda hospital

II. Cases reported by Public and Private HFs:

- **Malaria:** 31,223 cases
- **Flu syndrome:** 23,833 cases
- **Non-bloody Diarrhoea:** 3,955 cases
- **Severe Pneumonia in children under five years:** 306 cases
- **Bloody diarrhoea:** 30 cases
- **Chicken pox:** 14 cases
- **Mumps:** 34 cases
- **Measles:** Two suspected cases of measles were notified one case each from Hanika HC of Kibogora and Shyira HC
- **Dog bites (rabies exposure):** Nine cases of dog bites were notified including four cases from Rwinkwavu hospital, three cases from Kibungo hospital, one case each from Kibogora and Kibuye hospitals
- **Rubella:** one suspected case was notified from Nyakabuye HC of Mibilizi hospital

EPIDEMIC SURVEILLANCE AND RESPONSE WEEKLY REPORT

Week 21 from 21st to 27th May, 2018



ESR Division

HIGHLIGHT OF THE WEEK:

- **Trend of four priority diseases with highest morbidity in 2018:** The trend of cases of the highest morbidity causes through e-IDSRS notified during the last 21 weeks those include Malaria, Influenza like illness, Non blood diarrhea and severe pneumonia under five years. **Cont'd. on P.2**

III. Deaths reported nationally: Ten deaths notified countrywide

- Seven deaths due to **Malaria** were notified one death each from Gashonyi HC of Kabaya hospital, Gihundwe, Gisenyi, Kabgayi, Kibungo, Remera Rukoma and Rwinkwavu Hospitals.
- Three deaths due to **severe pneumonia under five years** were notified including two deaths from Gisenyi hospital and one death from Ruhengeri hospital

- **Typhoid fever:** 19 suspected cases of Typhoid fever were notified including 14 cases from Mahama refugee camp, three cases from Kinihira hospital and two cases from Mont Nyamagumba clinic in Musanze
- **Viral conjunctivitis:** Two cases were notified from Prison Nsinda of Rwamagana hospital

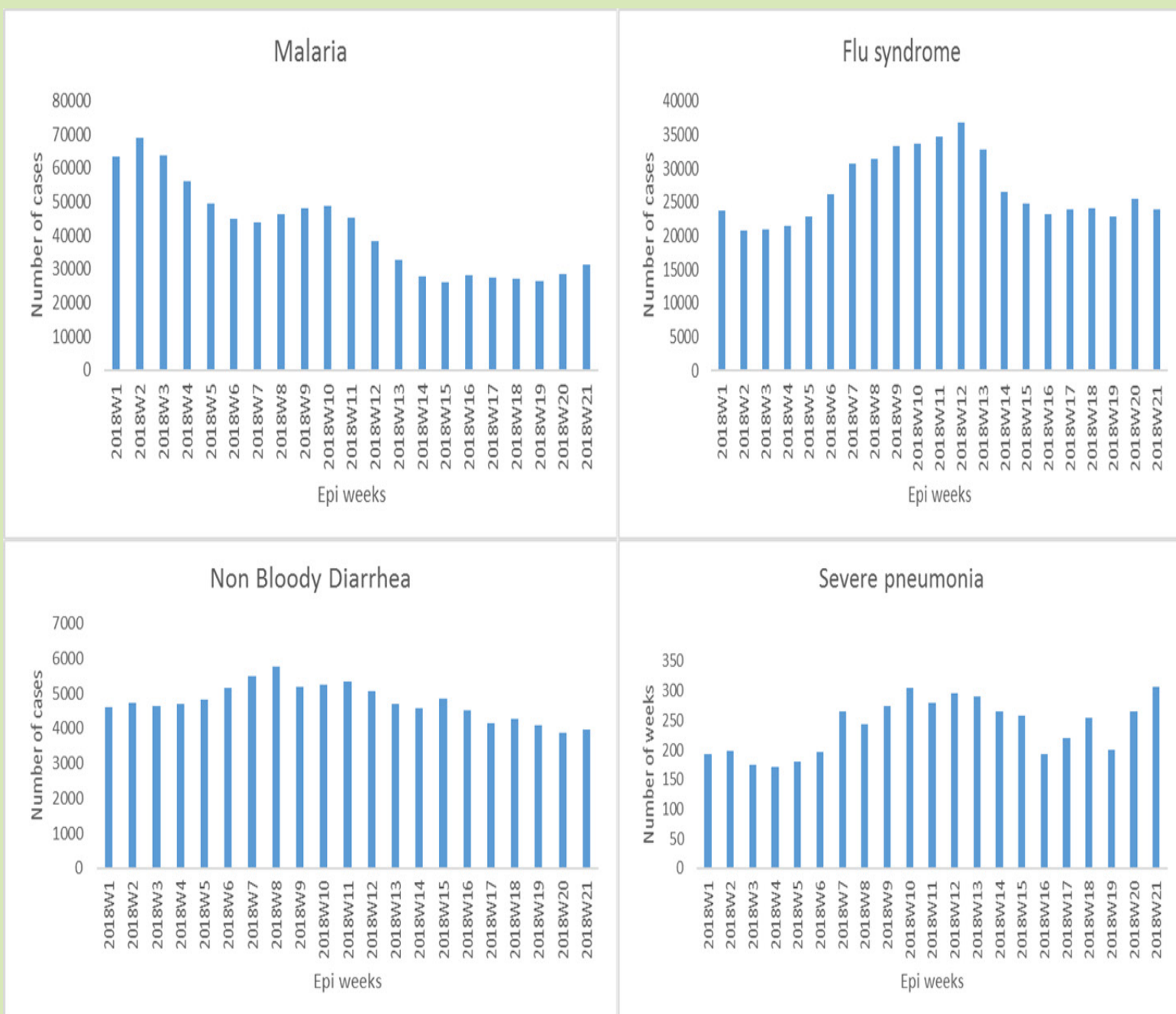
Editorial team: Dr J. Nyamusore, Dr L. Hakizimana, Dr J. Omolo, A. Kabeja, E. Nshimiyimana, H. Balisanga, F. Nizeyimana, A. Mutoni, A. Kapiteni, L. Ruyange, M. Utumuliza



EPIDEMIC SURVEILLANCE AND RESPONSE WEEKLY REPORT

From P. 1

Fig1. Trend of High Morbidity diseases for the last 21 weeks, 2018



Source: eIDSR Rwanda

EPIDEMIC SURVEILLANCE AND RESPONSE WEEKLY REPORT

Table 1: THE FOLLOWING 45 PUBLIC HEALTH FACILITIES DIDN'T SUBMIT THEIR REPORTS IN WEEK 21/2018

Province	Hospital	Health Facility		Province	Hospital	Health Facility
East	Gahini	Mukarange CS		South	Gitwe	Mwendo (Gitwe) CS
East	Gahini	Rutare (kayonza) CS		South	Kabgayi	Mata CS
East	Kirehe	Mahama CS		South	Kabutare	Karama (huye) CS
East	Kirehe	Mahama Refugee Camp HC		South	Kibilizi	Kansi CS
East	Kiziguro	Humure CS		South	Munini	Nyantanga CS
East	Nyagatare	Nyagatare Prison		South	Nyanza	Hanika I (NYANZA) CS
East	Nyagatare	Nyakigando (Nyagatare) CS		South	Nyanza	Mucubira CS
East	Rwamagana	Gahengeri CS		South	Nyanza	Nyanza DH
East	Rwamagana	Gishari(Police) CS		South	Nyanza	Nyarusange (nyanza) CS
East	Rwamagana	Nyagasambu CS		West	Gihundwe	Prison Rusizi
East	Rwinkwavu	Cyarubare CS		West	Gisenyi	Bugeshi CS
East	Rwinkwavu	Ruramira CS		West	Gisenyi	Gacuba li CS
Kigali City	Masaka	Nyarugunga CS		West	Gisenyi	Karambo (rubavu) CS
Kigali City	Muhima	PCK(Gitega Pris)		West	Kibogora	Ruheru (kanjongo Nyamasheke) CS
North	Butaro	Butaro DH		West	Kirinda	Biguhu CS
North	Butaro	Ndongozi CS		West	Kirinda	Munzanga CS
North	Byumba	Ruvune CS		West	Kirinda	Mwendo (karongi) CS
North	Nemba	Nemba DH		West	Mibilizi	Islamic (Bugarama) CS
North	Ruhengeri	Gataraga (MUSANZE) CS		West	Mugonero	Gisovu CS
North	Ruhengeri	Kabere CS		West	Murunda	Kabona CS
North	Ruhengeri	Kimonyi CS		West	Shyira	Arusha CS
North	Ruhengeri	Shingiro CS				
North	Rutongo	Rutonde CS				

EPIDEMIC SURVEILLANCE AND RESPONSE WEEKLY REPORT

Table 2. CASES NOTIFIED DURING WEEK 21, 2018

Province	Hospital	Public HF's		Private HF's			IDSR Priority diseases: number of notified cases																							
		Expected	Completeness (%)	Timeliness (%)	Expected	Completeness (%)	Timeliness (%)	Non Bloody Diarrhea	Flu syndrom e	Malaria	Severe pneumo nia under five years	Acute Flaccid Paralysis	Bloody Diarrhea	Chicken Pox - Varicella	Cholera	Diphtheri a	Epidemic Typhus	Food Poisonin g	Haemorrhagic fever	Sum of Cases Measles	Meningo coccal Meningiti s	Mumps	Neonatal tetanus	Plague	Dog bites (Rabies exposure)	Rubella	Typhoid Fever	Viral Conjunct ivitis	Whoopin g Cough Pertussis	Yellow Fever
East	Gahini	9	77.8	77.8	3	66.7	66.7	39	248	2097	1	0	0	0	0	0	0	0	0	0	0	0	0	0	0	0	0	0	0	0
East	Kibungo	13	100.0	100.0	1	0.0	0.0	63	102	3581	4	0	1	1	0	0	0	0	0	0	0	0	0	0	0	3	0	0	0	0
East	Kirehe	19	89.5	78.9	1	0.0	0.0	315	1975	382	36	0	3	0	0	0	0	0	0	0	0	0	0	0	0	0	0	14	0	0
East	Kiziguro	13	92.3	69.2	2	0.0	0.0	76	501	351	2	0	0	0	0	0	0	0	0	0	0	0	0	0	0	0	0	0	0	0
East	Ngarama	8	100.0	100.0	0			51	585	69	1	0	0	0	0	0	0	0	0	0	0	0	0	0	0	0	0	0	0	0
East	Nyagatare	22	90.9	77.3	14	21.4	21.4	218	362	158	12	0	3	0	0	0	0	0	0	0	0	0	0	0	0	0	0	0	0	0
East	Nyamata	17	100.0	88.2	0			139	728	898	14	0	0	0	0	0	0	0	0	0	0	4	0	0	0	0	0	0	0	0
East	Rwamagar	16	81.3	75.0	4	0.0	0.0	182	2198	3232	10	0	0	0	0	0	0	0	0	0	0	0	0	0	0	0	0	2	0	0
East	Rwinkwavu	8	75.0	62.5	2	0.0	0.0	40	109	1158	3	0	0	0	0	0	0	0	0	0	0	0	0	0	4	0	0	0	0	0
Kigali City	Kacyiru	1	100.0	100.0	0			0	0	4	0	0	0	0	0	0	0	0	0	0	0	0	0	0	0	0	0	0	0	0
Kigali City	Kibagabag	17	100.0	94.1	29	24.1	24.1	154	1105	1763	11	0	2	1	0	0	0	0	0	0	0	7	0	0	0	0	0	0	0	0
Kigali City	Masaka	11	90.9	90.9	20	20.0	15.0	81	482	867	0	0	0	0	0	0	0	0	0	0	0	0	0	0	0	0	0	0	0	0
Kigali City	Muhima	12	91.7	75.0	28	28.6	25.0	109	633	726	7	0	7	1	0	0	0	0	0	0	0	1	0	0	0	0	0	0	0	0
North	Butaro	20	90.0	90.0	1	100.0	100.0	230	545	81	7	0	5	0	0	0	0	0	0	0	0	0	0	0	0	0	0	0	0	0
North	Byumba	26	96.2	96.2	3	0.0	0.0	138	1014	406	11	0	1	1	0	0	0	0	0	0	0	8	0	0	0	0	0	0	0	0
North	Kinihira	10	100.0	100.0	1	0.0	0.0	56	53	52	2	0	0	0	0	0	0	0	0	0	0	0	0	0	0	0	3	0	0	0
North	Nemba	16	93.8	93.8	0			77	37	54	1	0	0	0	0	0	0	0	0	0	0	0	0	0	0	0	0	0	0	0
North	Ruhengeri	17	76.5	58.8	3	100.0	100.0	132	920	58	13	0	1	0	0	0	0	0	0	0	0	0	0	0	0	0	2	0	0	0
North	Ruli	9	100.0	100.0	0			35	131	184	2	0	1	0	0	0	0	0	0	0	0	0	0	0	0	0	0	0	0	0
North	Rutongo	13	92.3	92.3	0			55	589	547	9	0	0	0	0	0	0	0	0	0	0	2	0	0	0	0	0	0	0	0
South	Gakoma	6	100.0	83.3	1	0.0	0.0	60	178	118	2	0	0	0	0	0	0	0	0	0	0	0	0	0	0	0	0	0	0	0
South	Gitwe	9	88.9	88.9	0			34	148	942	0	0	0	0	0	0	0	0	0	0	0	0	0	0	0	0	0	0	0	0
South	Kabgayi	18	94.4	83.3	4	25.0	0.0	79	811	970	5	0	0	0	0	0	0	0	0	0	0	2	0	0	0	0	0	0	0	0
South	Kabutare	18	94.4	72.2	2	0.0	0.0	93	841	493	2	0	0	2	0	0	0	0	0	0	0	0	0	0	0	0	0	0	0	0
South	Kaduha	10	100.0	90.0	0			39	234	277	8	0	1	1	0	0	0	0	0	0	0	0	0	0	0	0	0	0	0	0
South	Kibilizi	10	90.0	90.0	0			75	571	186	7	0	0	0	0	0	0	0	0	0	0	0	0	0	0	0	0	0	0	0
South	Kigeme	12	100.0	91.7	2	50.0	50.0	66	539	231	10	0	0	1	0	0	0	0	0	0	0	0	0	0	0	0	0	0	0	0
South	Munini	17	94.1	94.1	1	100.0	100.0	108	738	302	1	0	0	0	0	0	0	0	0	0	0	4	0	0	0	0	0	0	0	0
South	Nyanza	18	77.8	50.0	1	0.0	0.0	68	668	1311	20	0	1	3	0	0	0	0	0	0	0	1	0	0	0	0	0	0	0	0
South	Remera R	14	100.0	92.9	3	0.0	0.0	73	1090	1768	7	0	0	0	0	0	0	0	0	0	0	0	0	0	0	0	0	0	0	0
South	Ruhango	8	100.0	100.0	4	25.0	25.0	62	559	1538	3	0	0	0	0	0	0	0	0	0	0	0	0	0	0	0	0	0	0	0
West	Bushenge	8	100.0	75.0	0			50	291	565	5	0	0	0	0	0	0	0	0	0	0	0	0	0	0	0	0	0	0	0
West	Gihundwe	9	88.9	66.7	2	50.0	50.0	62	231	552	3	0	0	0	0	0	0	0	0	0	0	0	0	0	0	0	0	0	0	0
West	Gisenyi	15	80.0	73.3	8	12.5	12.5	204	976	1149	28	0	0	1	0	0	0	0	0	0	0	3	0	0	0	0	0	0	0	0
West	Kabaya	10	100.0	100.0	2	0.0	0.0	4	112	64	0	0	0	0	0	0	0	0	0	0	0	0	0	0	0	0	0	0	0	0
West	Kibogora	14	92.9	92.9	0			83	399	1802	26	0	0	2	0	0	0	0	0	0	1	0	0	0	0	1	0	0	0	0
West	Kibuye	13	100.0	84.6	0			78	406	133	5	0	1	0	0	0	0	0	0	0	0	0	0	0	0	1	0	0	0	0
West	Kirinda	6	50.0	33.3	0			5	30	184	2	0	0	0	0	0	0	0	0	0	0	0	0	0	0	0	0	0	0	0
West	Mibilizi	12	91.7	75.0	3	66.7	33.3	106	159	1180	10	0	0	0	0	0	0	0	0	0	0	0	0	0	0	0	1	0	0	0
West	Mugonero	7	85.7	85.7	0			23	136	276	5	0	0	0	0	0	0	0	0	0	0	0	0	0	0	0	0	0	0	0
West	Muhororo	16	100.0	100.0	1	100.0	100.0	42	283	186	0	0	0	0	0	0	0	0	0	0	0	0	0	0	0	0	0	0	0	0
West	Murunda	18	94.4	94.4	0			178	732	263	6	0	0	0	0	0	0	0	0	0	0	0	0	0	0	0	0	0	0	0
West	Shyira	17	94.1	94.1	1	0.0	0.0	165	1300	38	2	0	3	0	0	0	0	0	0	0	1	0	2	0	0	0	0	0	0	0
Referral H	CHUB	1	100.0	100.0	0			7	71	5	3	0	0	0	0	0	0	0	0	0	0	0	0	0	0	0	0	0	0	0
Referral H	CHUK	1	100.0	100.0	0			1	3	9	0	0	0	0	0	0	0	0	0	0	0	0	0	0	0	0	0	0	0	0
Referral H	RMH	1	100.0	100.0	0			0	10	13	0	0	0	0	0	0	0	0	0	0	0	0	0	0	0	0	0	0	0	0
Grand Total		565	92.2	84.6	147	25.2	22.4	3955	23833	31223	306	0	30	14	0	0	0	0	0	0	2	0	34	0	0	9	1	19	2	0